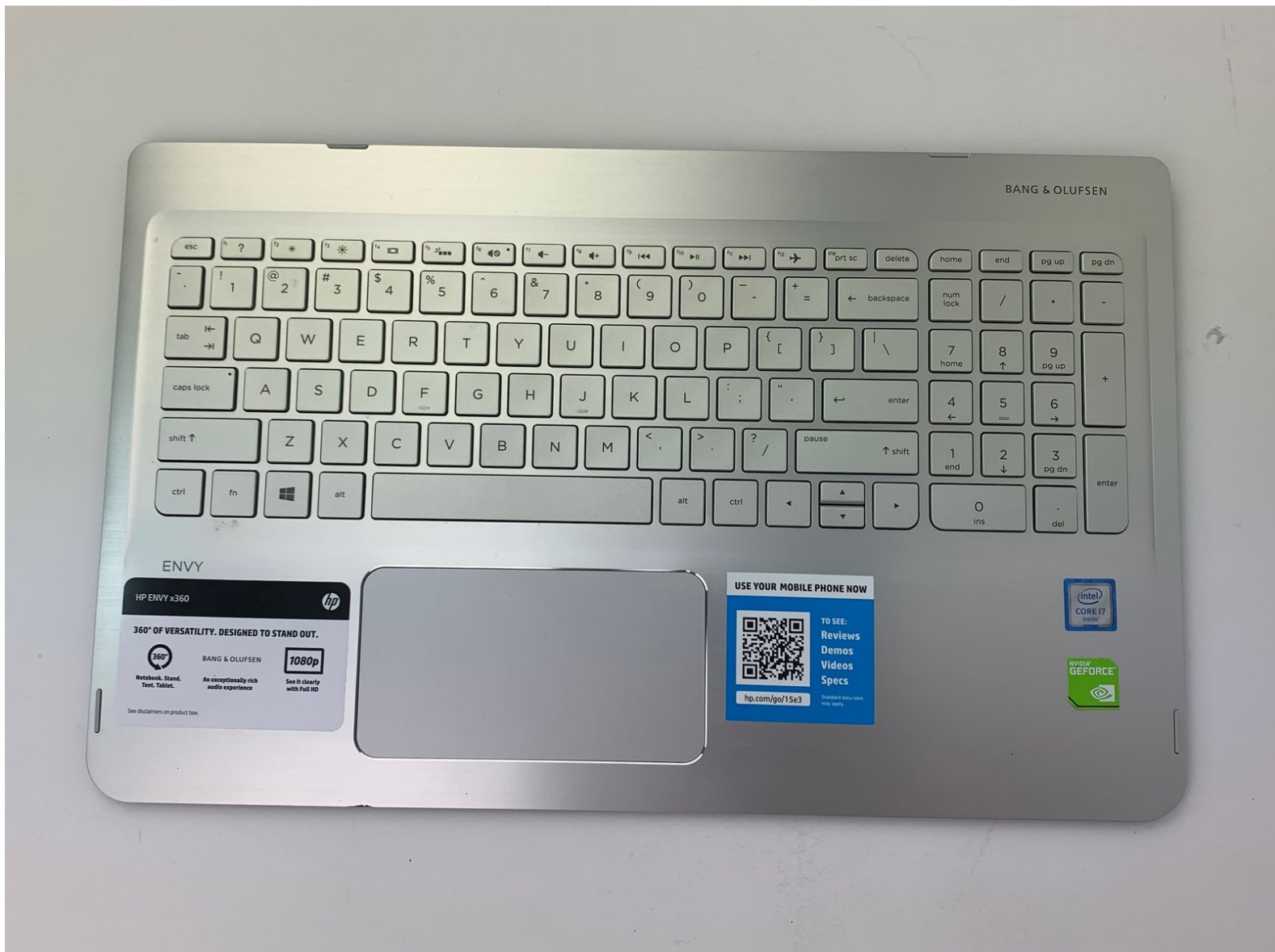




# HP Envy x360 m6-w105dx Keyboard Replacement

This guide will show a user how to replace the keyboard for HP Envy x360 m6-w105dx.

Written By: Dalton Hancock



---

## INTRODUCTION

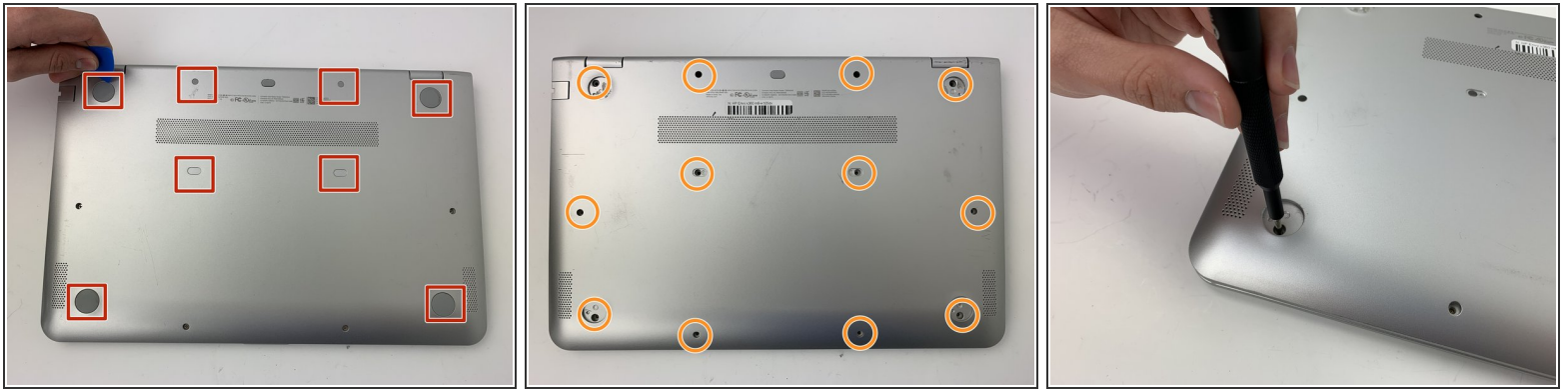
Use this guide to replace your HP Envy x360 m6-w105dx keyboard. You might need to replace your keyboard if the keys are sticky or unresponsive, or you can use this guide for keyboard removal to access the internals for cleaning and repairs. Before beginning, make sure to power off the computer entirely and disconnect from any external power source.

---

### TOOLS:

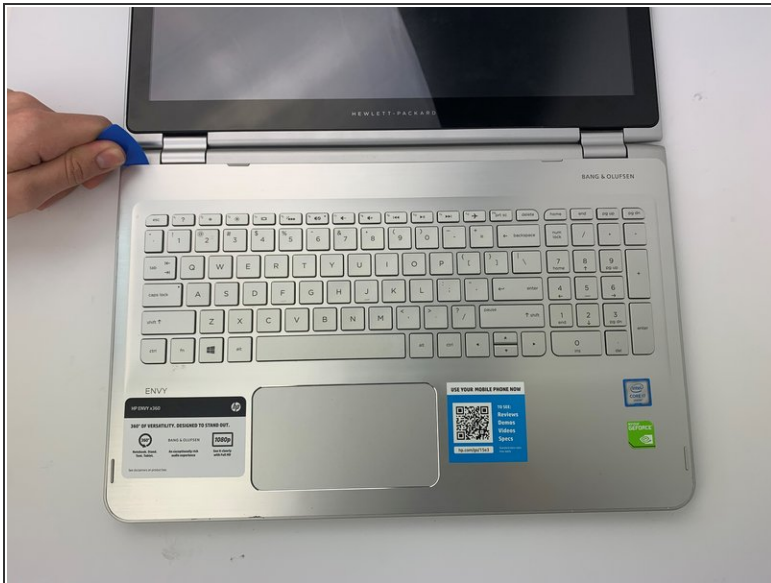
- [Phillips #1 Screwdriver](#) (1)
  - [iFixit Opening Picks set of 6](#) (1)
-

## Step 1 — Keyboard



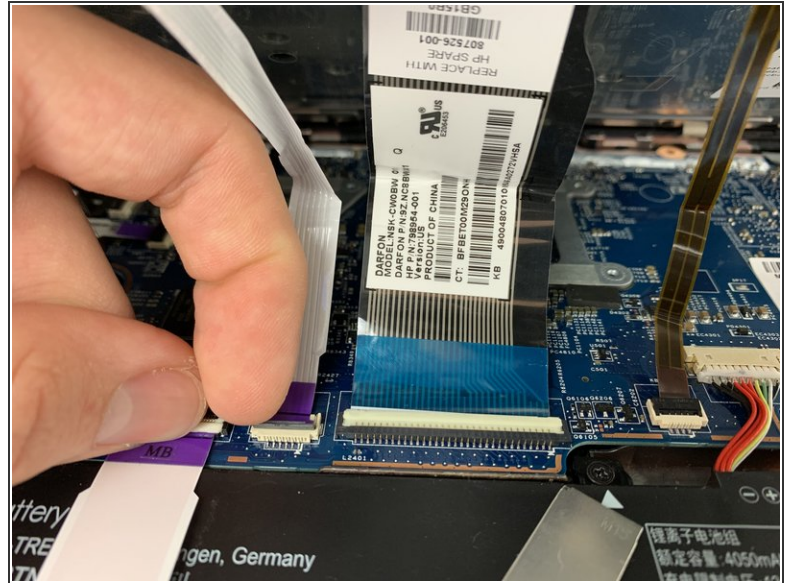
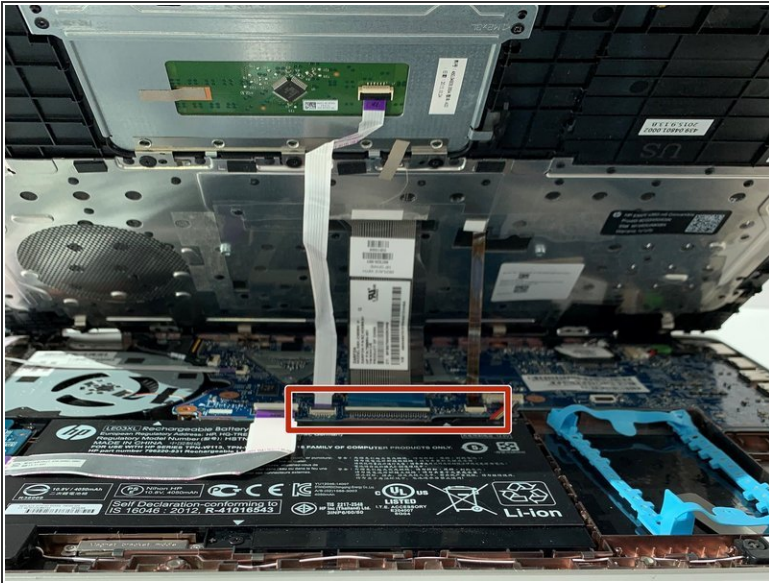
- ✦ Make sure the laptop is powered off and disconnected from any outlets.
- Use the opening pick to lift up the eight rubber grips on the underside of the device.
- With the #1 Phillips screwdriver, remove the twelve 6mm screws from the back case.

## Step 2



- Open the laptop and turn to the keyboard.
  - Gently insert an opening pick into the edge of the keyboard panel, and slide around the keyboard lining until the clips have all been disengaged.
  - Lift the keyboard panel from the bottom and carefully start to lift up.
- ⚠ There are ribbon cables still connected on the under side of the the keyboard. Do not pull the keyboard away from the device.

## Step 3



- Gently lift the keyboard up from the bottom.
- Carefully open the locking flap of the three ZIF connectors and detach the three ribbon cables from the motherboard using your fingers.
- ⚠ Do not remove the ZIF connectors by pulling on the wires, instead detach them by gently flipping up the plastic tabs located at the ends of the wiring.
- Fully remove the keyboard from the laptop and install your new keyboard.

To reassemble your device, follow these instructions in reverse order.