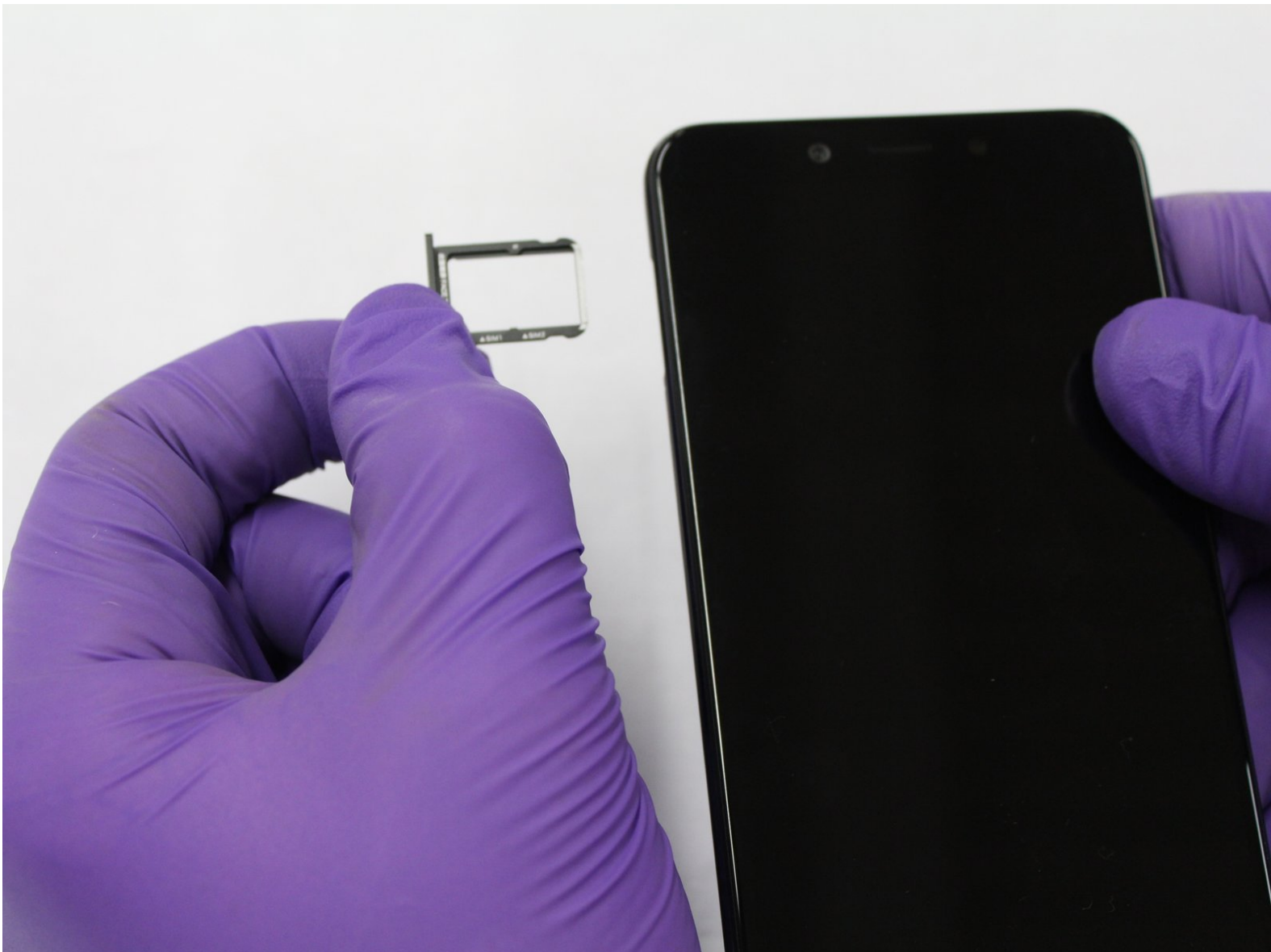




# Xiaomi Mi A2 SIM Card Replacement

This guide will show how to remove SIM tray and replace SIM card in your Xiaomi Mi A2

Written By: Zachary Parker



---

## INTRODUCTION

This guide will demonstrate SIM Card removal for the Xiaomi Mi A2 Smart Phone. This is a very easy step just make sure that you do not lose or break either the SIM card or the SIM tray during this replacement.

---

### TOOLS:

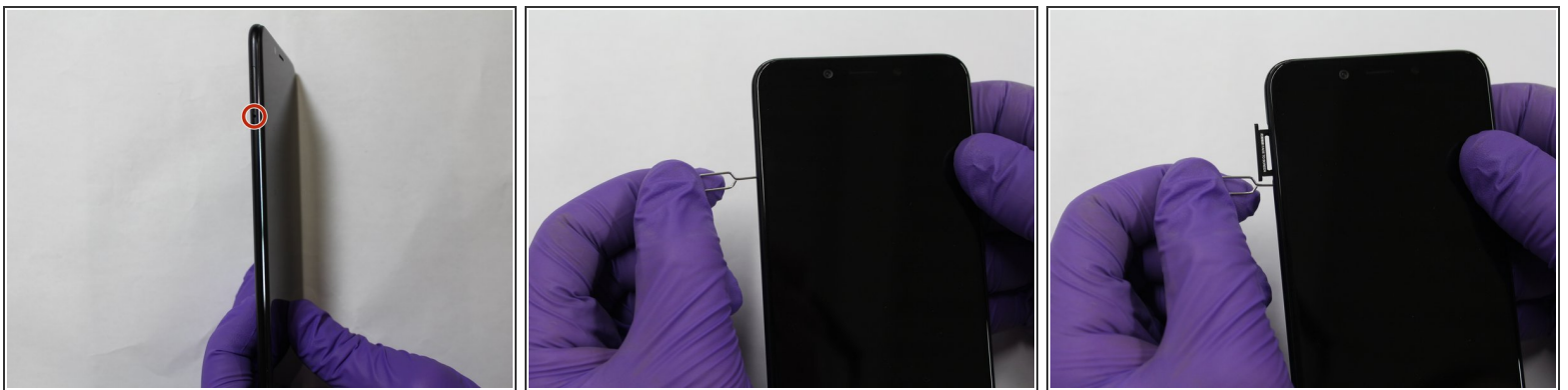
- [SIM Card Eject Tool](#) (1)

## Step 1 — SIM Card



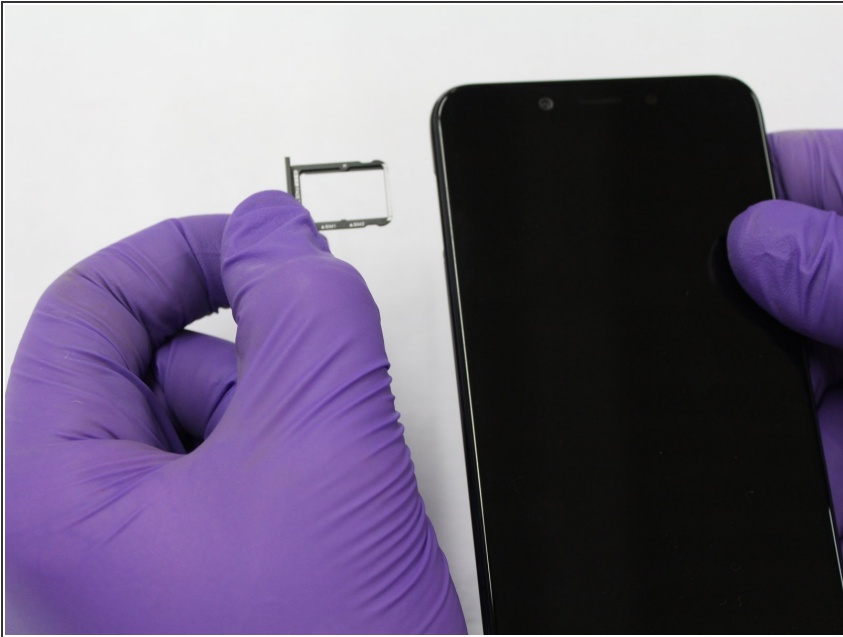
- Turn off phone by holding down power button before proceeding.
- Locate SIM Card Slot on the top left of the phone.
- ☑ Wear ESD bracelet to ensure you are electrostatic safe.

## Step 2



- Gently insert the SIM Tool into the press and release node below the SIM Card Slot.
- Gently press the SIM Tool until the SIM Tray pops out.

### Step 3



- Gently remove the SIM Tray containing the SIM Card.
- Remove the SIM Card from Tray.

To reassemble your device, follow these instructions in reverse order.