



Toshiba Satellite U405D-S2902 Keyboard Replacement

This guide shows how to replace a keyboard if it is needed.

Written By: Brandon Kirklen



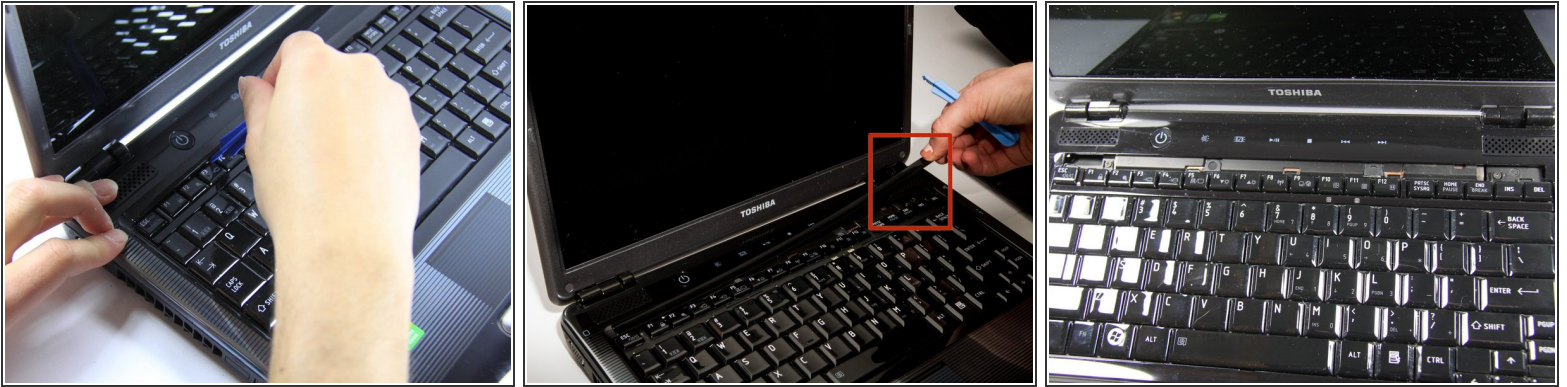
INTRODUCTION

The function of the keyboard is to allow you to type on the computer. Sometimes it can break and need to be replaced.

TOOLS:

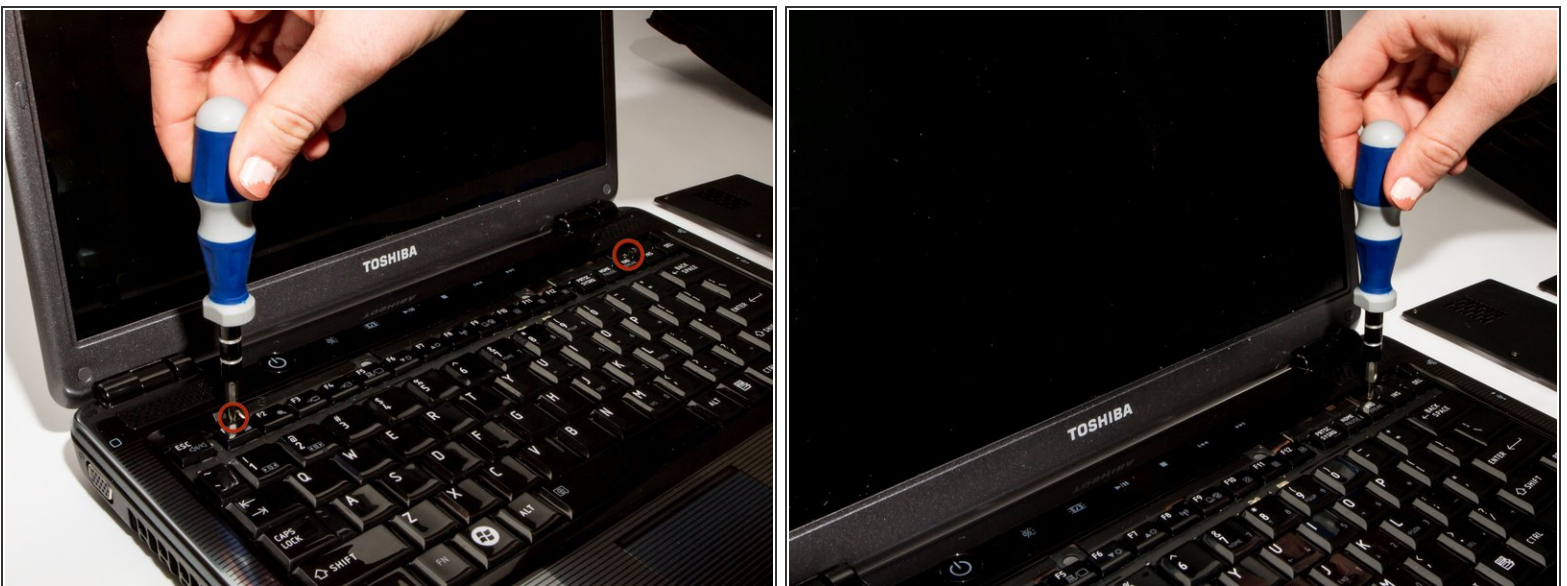
- [Phillips #1 Screwdriver](#) (1)
 - [iFixit Opening Tools](#) (1)
-

Step 1 — Keyboard



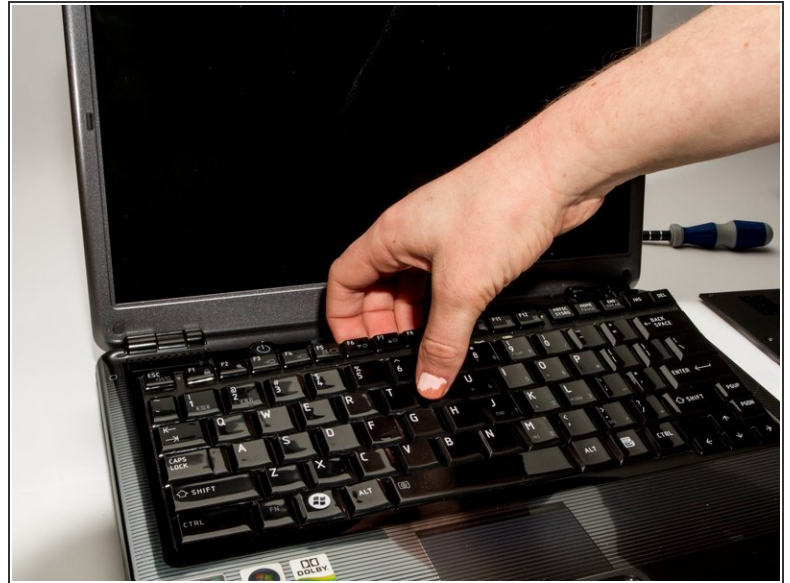
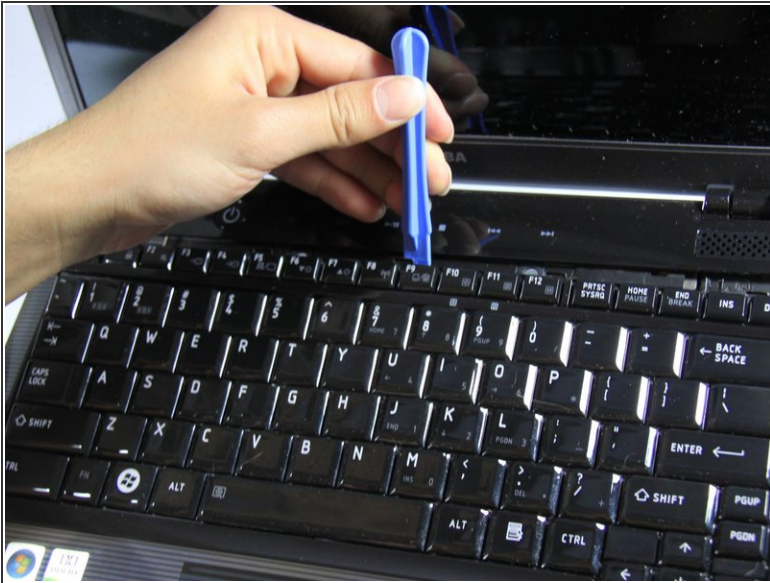
- Situate the laptop so that it is open and the display is facing you.
- Use the plastic opening tool to pry the black plastic insert upward. The insert can be found at the top of the keyboard.
- Once the insert is loose, carefully remove it from the device.

Step 2



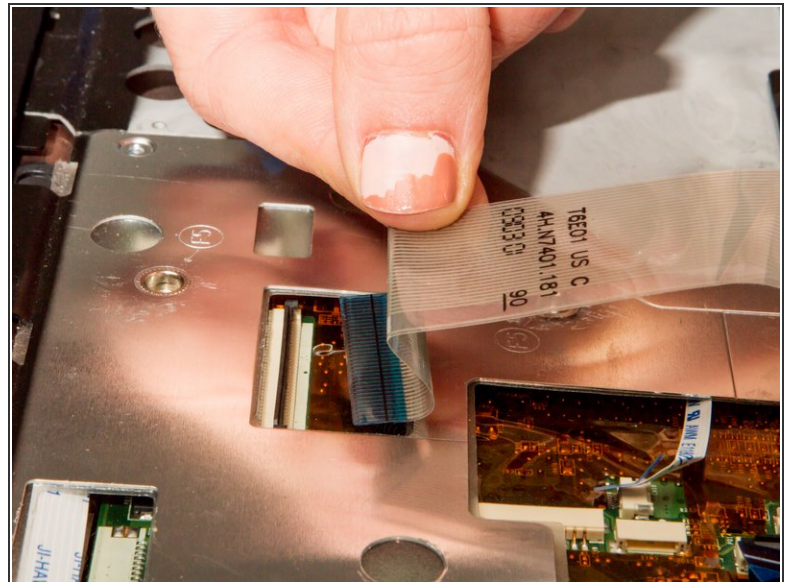
- Using #1 Phillips Screwdriver, remove both of the 5 mm screws that are located beneath the insert.

Step 3



- Use the plastic opening tool to begin removing the keys off of the device.
- ⓘ Once the keys are off, gently remove the keyboard. Be careful of the ribbon cable that still connects the keyboard to motherboard.

Step 4



- Lift up the gate on the ZIF socket to release the ribbon.
- Ease the ribbon connecting the keyboard to the motherboard out of the ZIF socket.

To reassemble your device, follow these instructions in reverse order.

This document was last generated on 2019-07-17 08:16:29 PM.