



Advent Modena M201 Hard Drive Replacement

Guide to replacing the hard drive on an advent m201 laptop

Written By: Edward



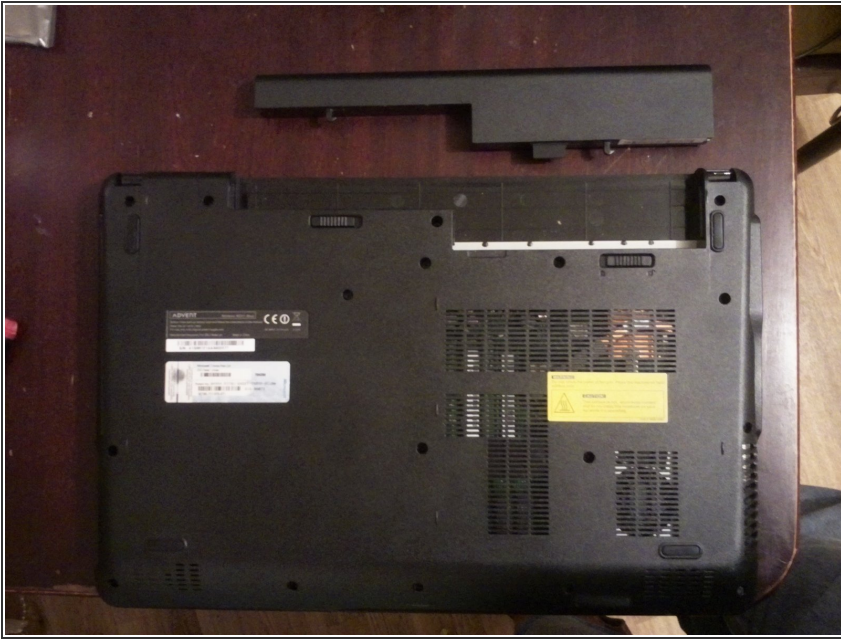
 **TOOLS:**

- Phillips #1 Screwdriver (1)
- Flathead 3/32" or 2.5 mm Screwdriver (1)

 **PARTS:**

- 2.5" SATA II Hard drive (1)

Step 1 — Hard Drive



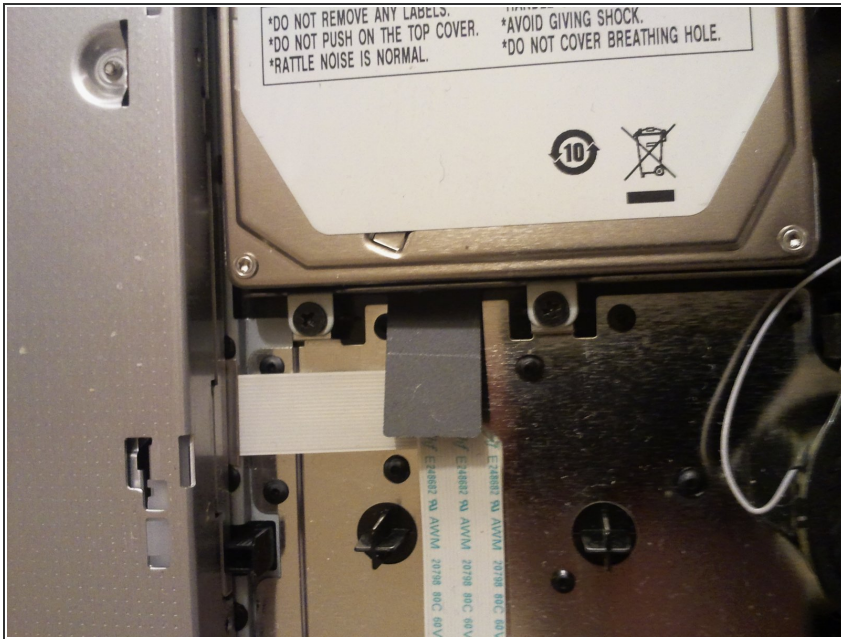
- Remove battery, press power button to ensure complete discharge.
- Remove all screws on the underside, there are no hidden screws

Step 2



- Unsnap case , it is best to start at the hinge joints. Work round the case towards the VGA port (RHS). The case needs to pop out over the port so ease the bottom out with your screwdriver. Work round towards the audio jacks (LHS). Lift the RHS of the case up and slide it towards the audio jacks to free them, as the casing cannot be eased over them.

Step 3



- Remove the two screw holding the hard drive caddy in place.
- Using the plastic tab , lift the caddy up over the screw pillars and pull gentle to the left to unsnap the SATA connector

Step 4



- remove the two screw holding the caddy to the end of the hard drive and attach to the new drive.
- Reverse the process to reassemble.

To reassemble your device, follow these instructions in reverse order.

This document was last generated on 2019-07-08 03:56:14 PM.