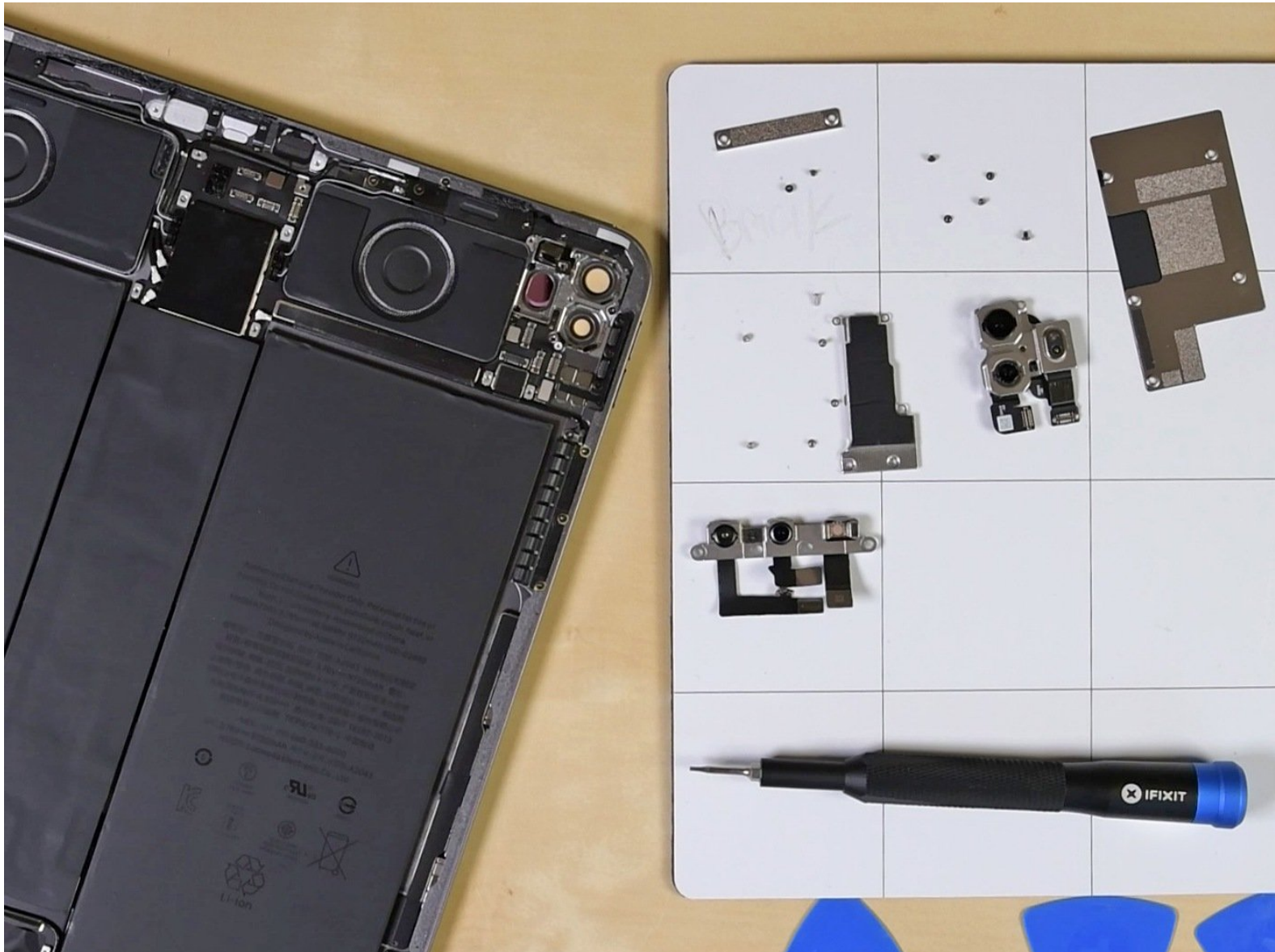




# iPad Pro 12.9" 4th Gen Teardown

A video teardown of the 4th-gen iPad Pro, announced and released in March 2020.

Written By: Taylor Dixon



---

## INTRODUCTION

[video: <https://www.youtube.com/watch?v=xz6CExnGw9w>]

## Step 1 — Final Thoughts

### REPAIRABILITY SCORE:



- The iPad Pro 12.9" 4th Gen "earns a **3 out of 10** on our repairability scale (10 is the easiest to repair):
  - The USB-C port is modular and can be independently replaced.
  - The lack of a physical home button eliminates a common failure point and may simplify repairs.
  - The battery is secured with both easier-to-remove stretch-release tabs *and* conventional, non-removable adhesive.
  - The LCD and front panel glass are fused together—simplifying the opening procedure, but increasing the cost of repair.
  - Gobs of adhesive hold most everything in place, making all repairs more difficult.

To reassemble your device, follow these instructions in reverse order.