



# Keurig K75 Platinum Brewing System Baseplate Replacement

Replace the baseplate of your Keurig K75 Platinum Brewing System.

Written By: Kristen Temnyk



---

## INTRODUCTION

Use this guide to remove or replace the baseplate of the Keurig K75 Platinum Brewing System. This allows the user to reach the internal parts of the Keurig B70 Platinum.

---

### TOOLS:

- [Phillips #2 Screwdriver](#) (1)
  - [Spudger](#) (1)
-

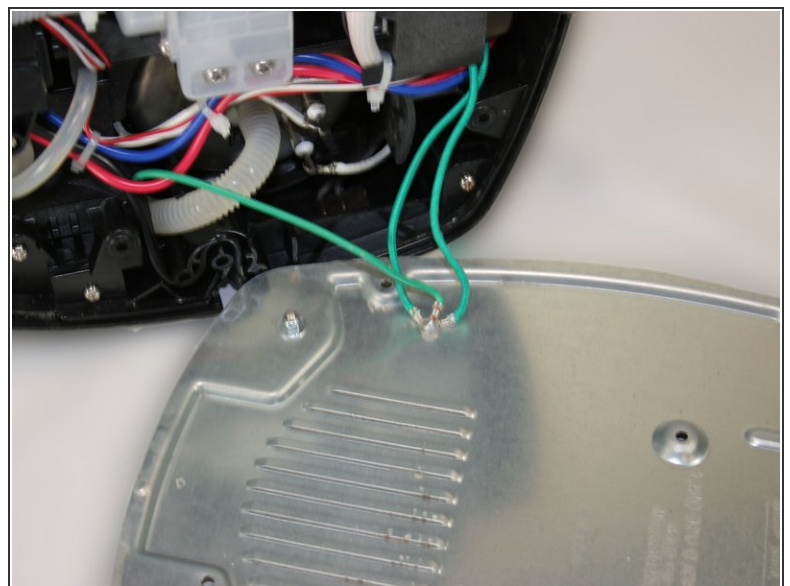
## Step 1 — Baseplate



**⚠** Before beginning the repair, turn off the brewer and disconnect it from any power source.

- Move the brewer so that the metal baseplate is easily accessible.
- Remove the five silver 4 mm Phillips #2 screws from the baseplate.

## Step 2



- Using a spudger, gently pry the metal baseplate from the brewer.
- Gently set down the baseplate.

To reassemble your device, follow these instructions in reverse order.

This document was last generated on 2019-08-21 08:59:45 AM.