



sonyo pro extraX multiverse projector bulb replacement

Replacement

replacing a spent or defective bulb

Written By: Matt Block

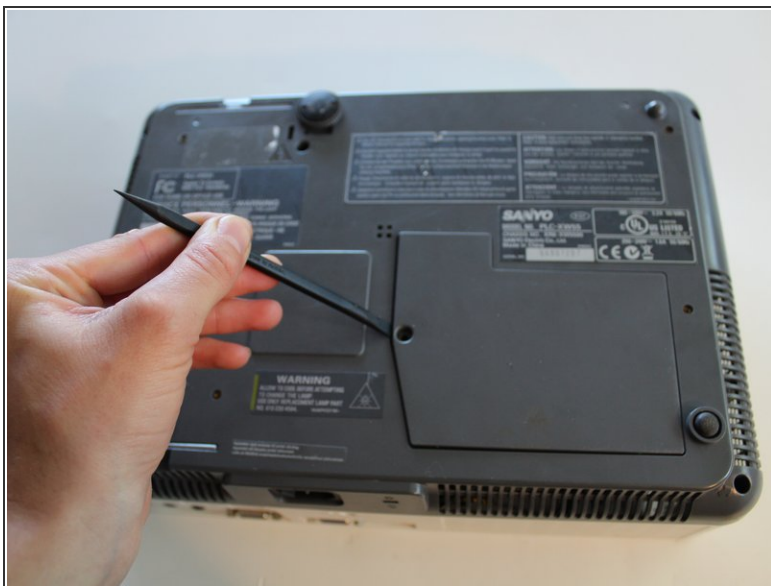


Step 1 — bulb replacement



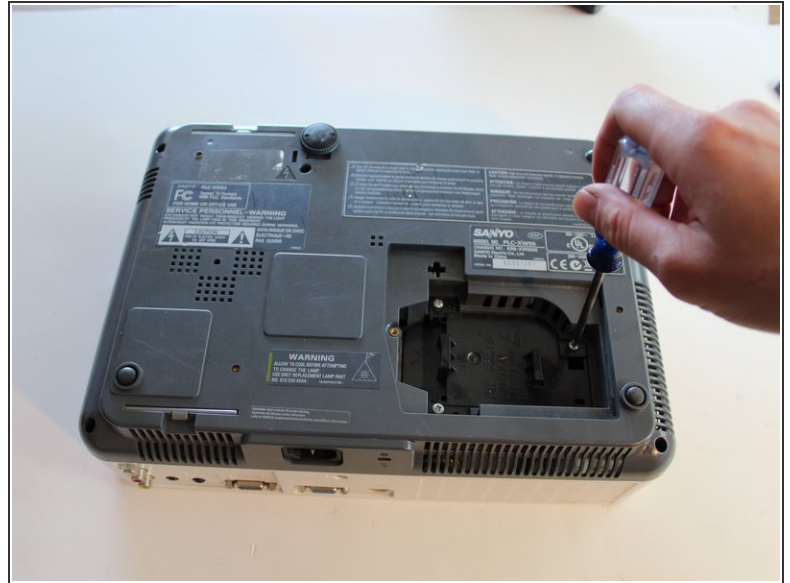
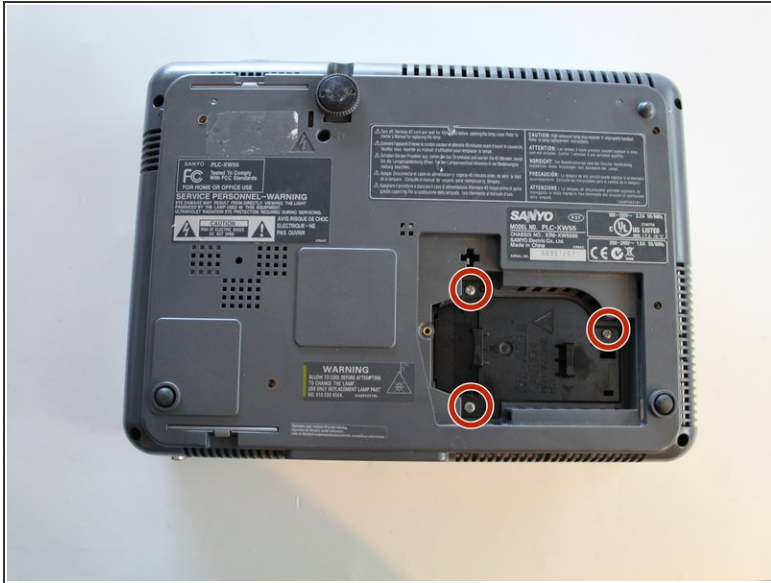
- Remove one 9mm screw with a Phillips 2 screwdriver.

Step 2



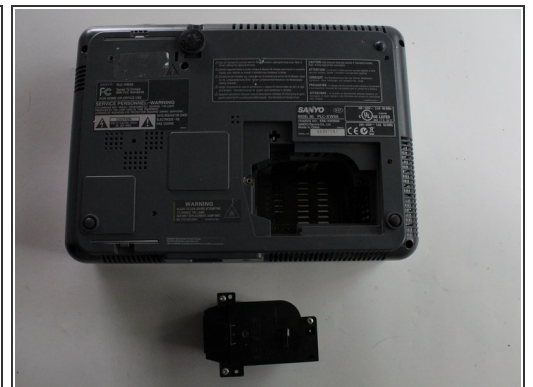
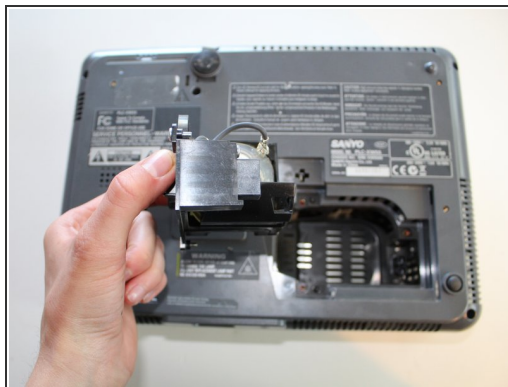
- Use a spudger to lift up the panel, then set it off to the side.

Step 3



- Remove three 11mm screws with a Phillips 2 screwdriver.

Step 4



- Pinch on the two plastic clips and lift up to remove the bulb completely.

To reassemble your device, follow these instructions in reverse order.