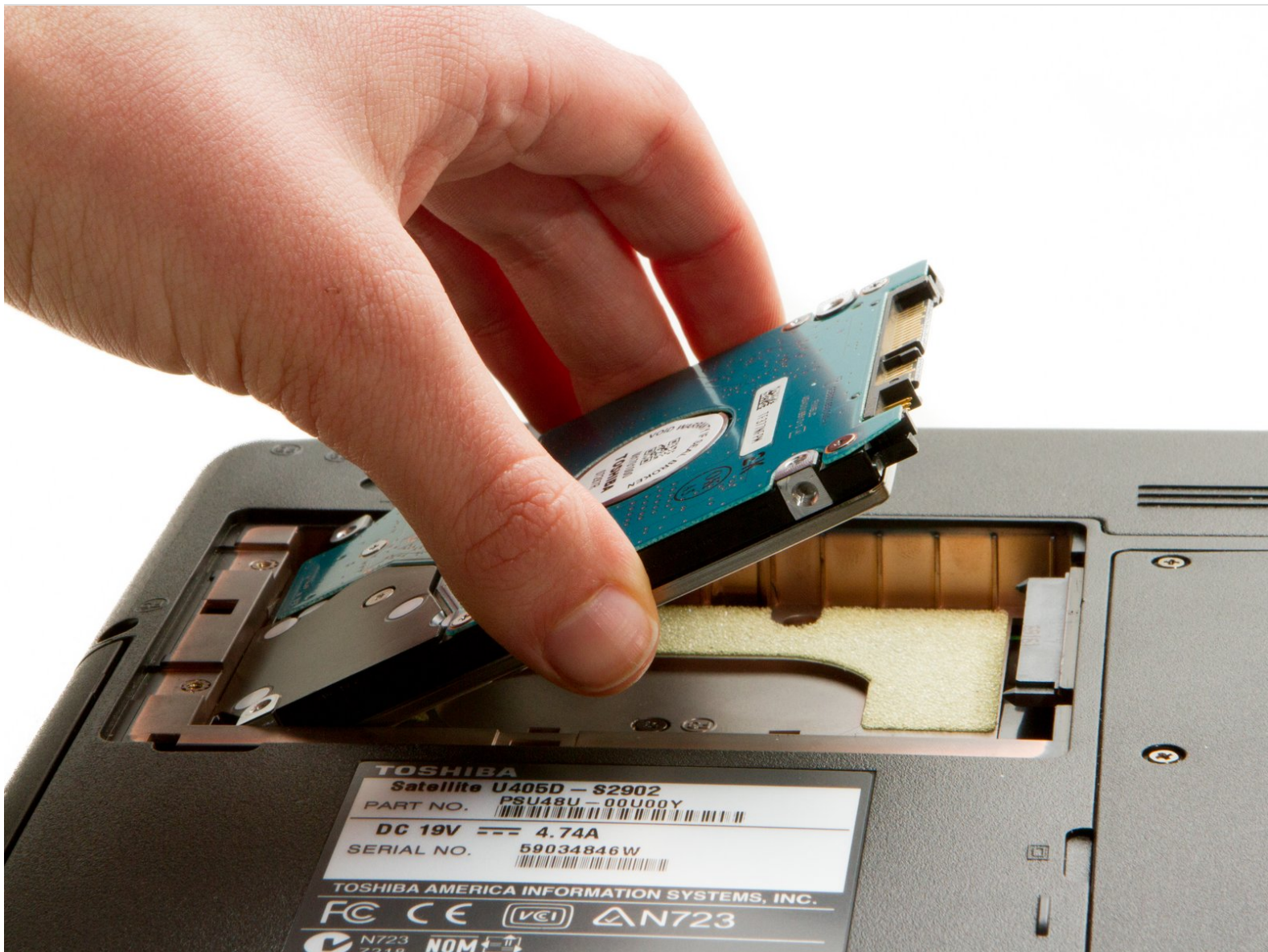




# Toshiba Satellite U405D-S2902 Hard Drive Replacement

The hard drive is the memory bank of the computer, holding all your files and information. It can become damaged or wear out in which case you'll need to replace it. You may also want access to the hard drive in case your computer hardware fails.

Written By: Brandon Kirklen



## INTRODUCTION

Sometimes the hard drive is corrupt, or you want to install a new one. This guide will show you how to take out a hard drive and replace.

---

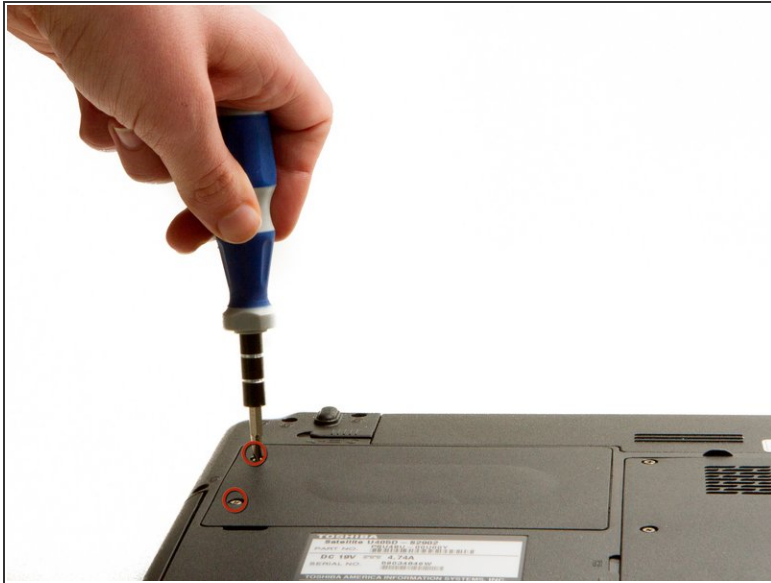
### **TOOLS:**

- [Phillips #1 Screwdriver](#) (1)

### **PARTS:**

- [SATA Hard Drive](#) (1)
-

## Step 1 — Hard Drive



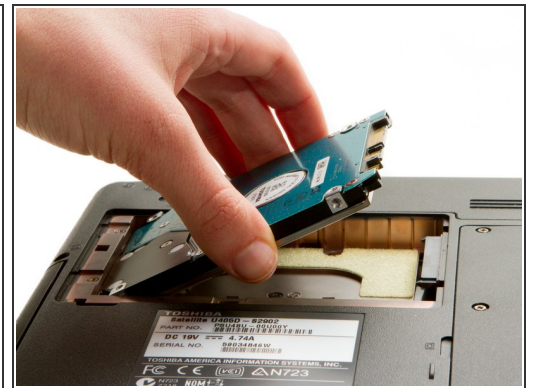
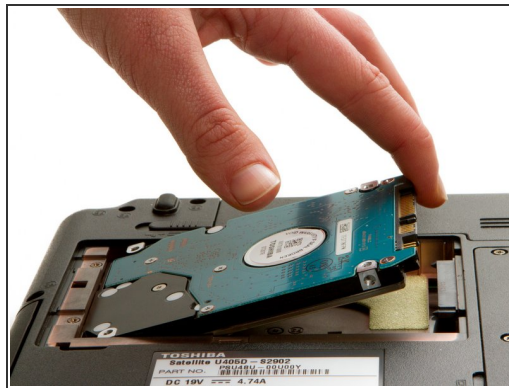
- Lay laptop on it's face and remove the two #1 Phillips screws in the back of the black plastic panel with a raised center.
- ⓘ The screws can not be removed from the panel, so loosen them until the panel can come off.
- Carefully lift the panel using the thumb slot on the side closest to you while the battery is pointed out.

## Step 2



- After lifting the cover up carefully, slide it to the left to be removed.

## Step 3



- Place two fingers gently on the hard drive.
- Slide it back to the left.
- Lift the drive by the two corner tabs making sure not to touch the metal

**⚠** Do not press down too hard on the top of the drive, or you will damage it. Only use enough pressure to be able to remove it from the SATA connection.

To reassemble your device, follow these instructions in reverse order.