



# Toshiba Satellite U405D-S2902 Display Replacement

The display on your laptop can be damaged due to drops or other physical trauma as well as internal connection damage. This guide will show you how to safely replace it.

Written By: Brandon Kirklen



 **TOOLS:**

- Tweezers (1)
  - Phillips #1 Screwdriver (1)
-

## Step 1 — Display



- Use tweezers to remove the small rubber covers over the screws on the top and bottom of the laptop case.

## Step 2



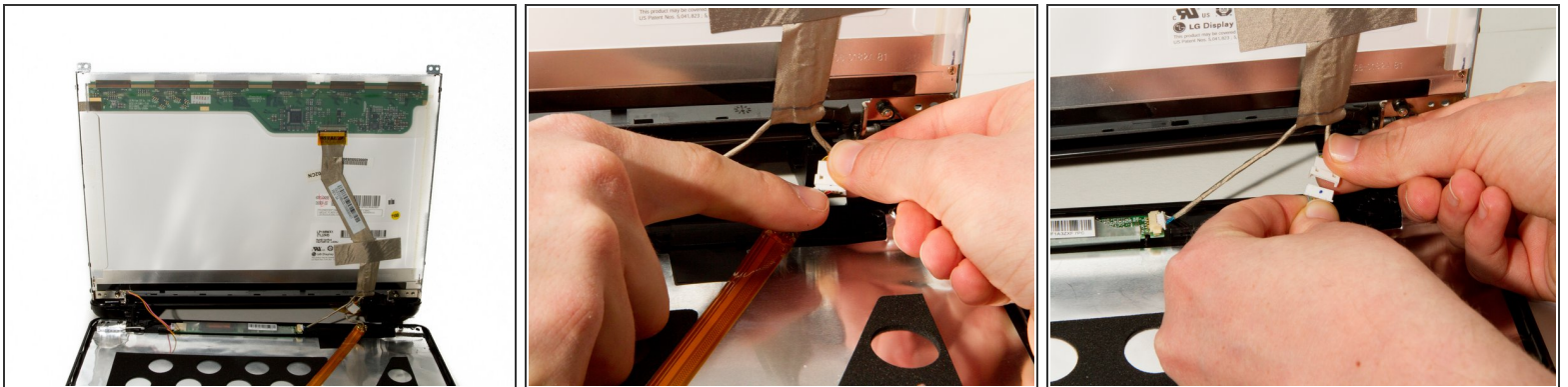
- Use a #1 Phillips screwdriver to remove the 3mm screws located on both sides of the top of the laptop as well as the lower corners.

### Step 3



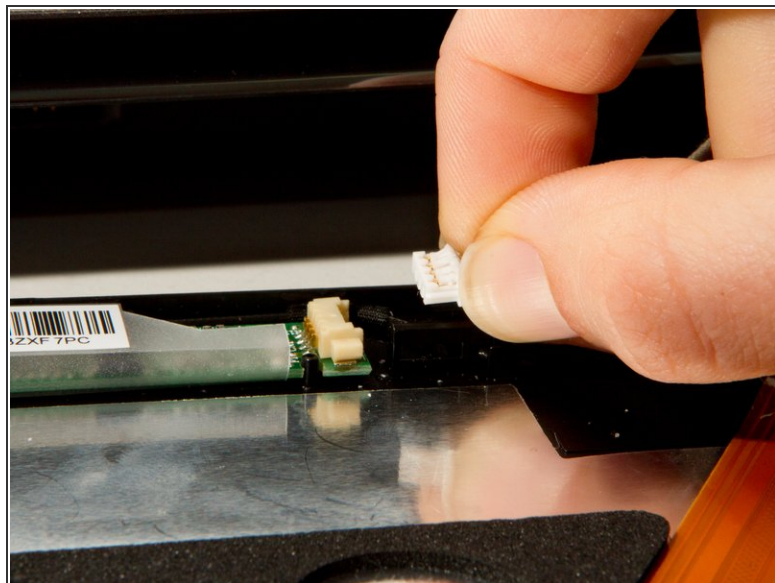
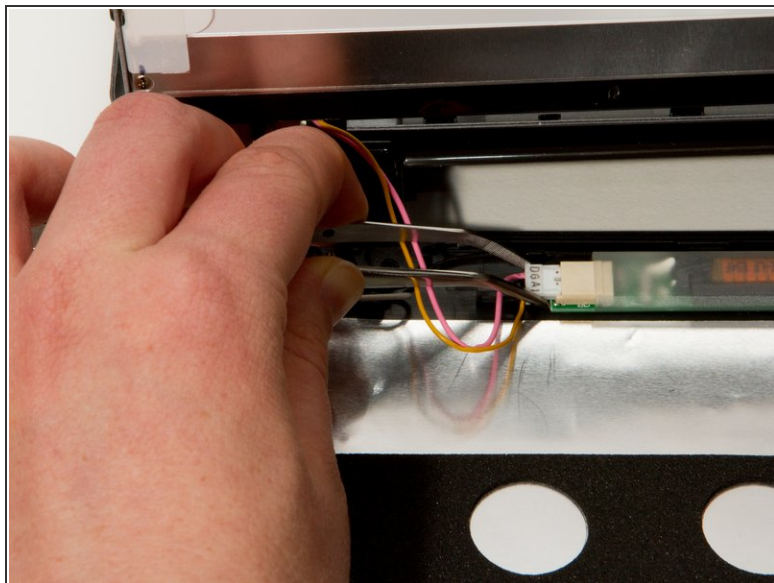
- Use a plastic opening tool to separate the front plastic panel from the back side of the top of the laptop.
- Carefully pull the top away from the back.

### Step 4



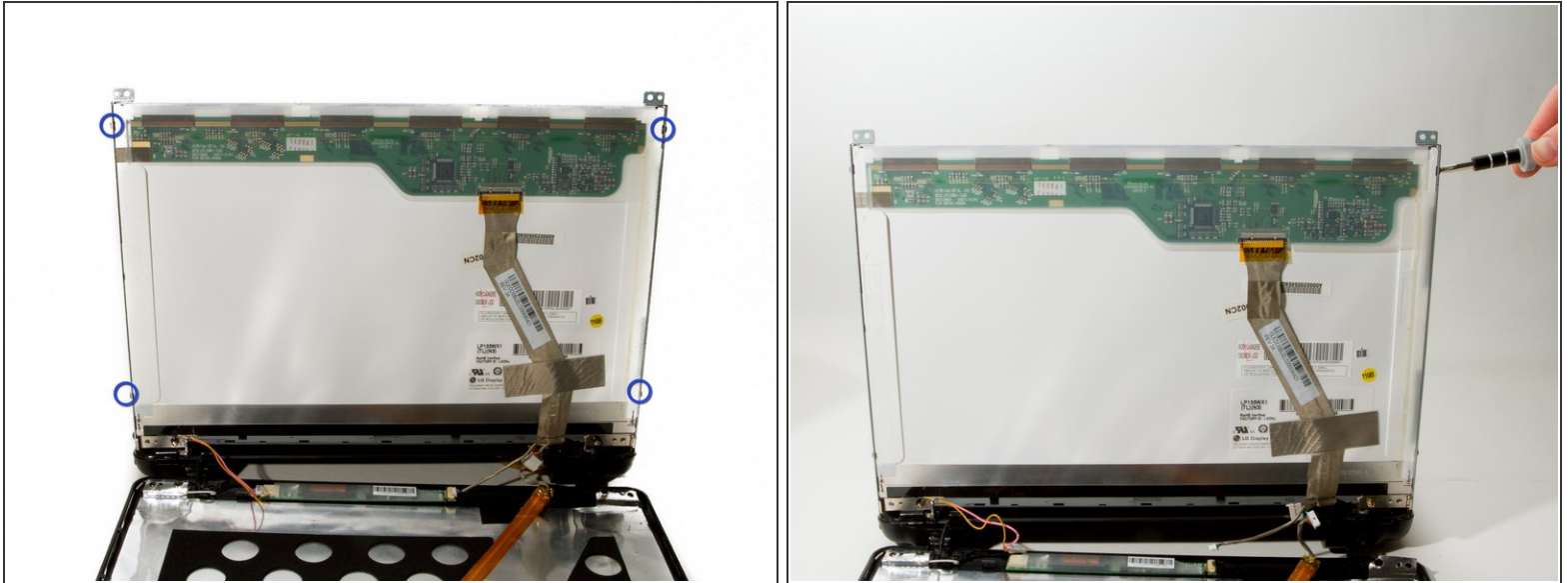
- Turn the laptop around.
- Remove the webcam/microphone data cable.



**Step 5**

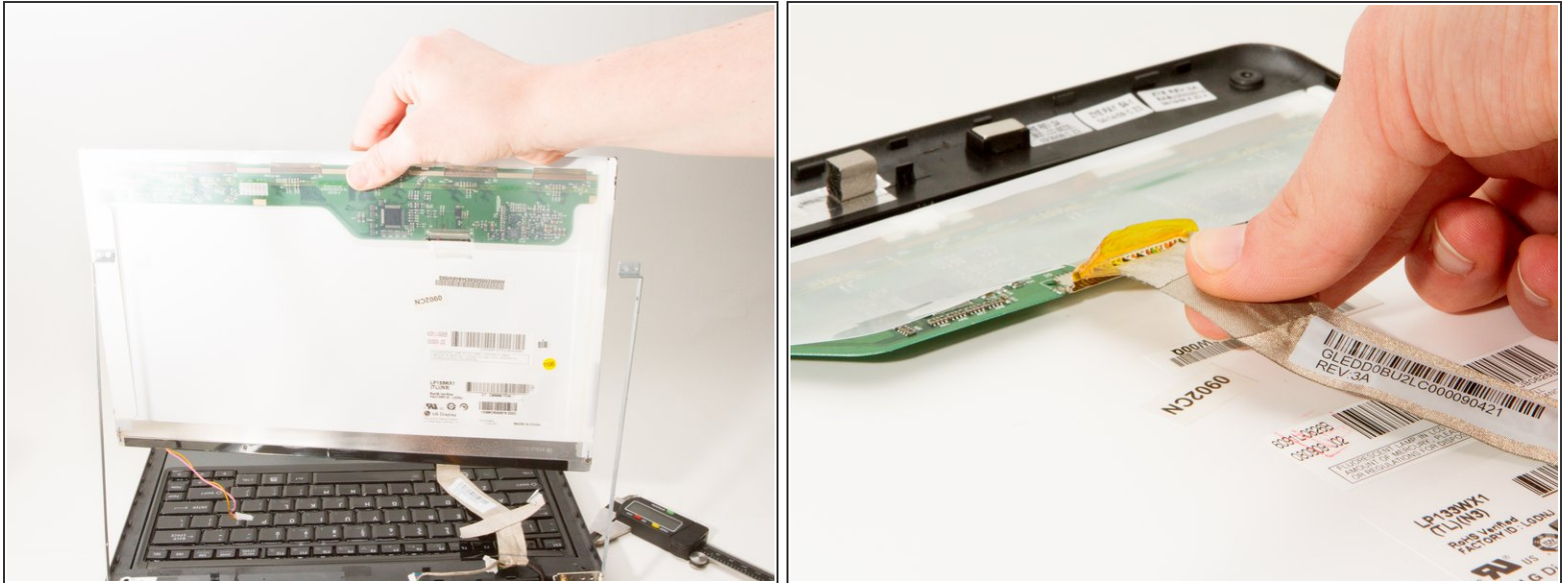
- Remove the lower lighting power supply.
- Remove the signal light power supply and data cable.

## Step 6



- Locate and remove the four 2mm #1 Phillips screws around the sidewalls of the display.
- ⚠ After removing the last screw, the screen will be very loose, be sure to keep a hand on it to prevent it from damaging the keyboard.

## Step 7



- Carefully remove the screen from the side brackets.
- Remove the LCD ribbon connector from the display.

To reassemble your device, follow these instructions in reverse order.