



Opening the Column in the Hamilton Galileo

This guide will walk you through how to open the column of the Hamilton Galileo ventilator, a beginning step needed for other replacement guides.

Written By: Ian Van Sciver



Figure A-4. ESD band and cable

INTRODUCTION

Utilize this guide to access inside the column, a step required for other guides such as replacing the power supply. For more information on opening the column, please refer to **page 11-6** in the full service manual.

TOOLS:

- [Metric Allen Key Set](#) (1)

Step 1 — Opening the Column in the Hamilton Galileo



Figure A-4. ESD band and cable

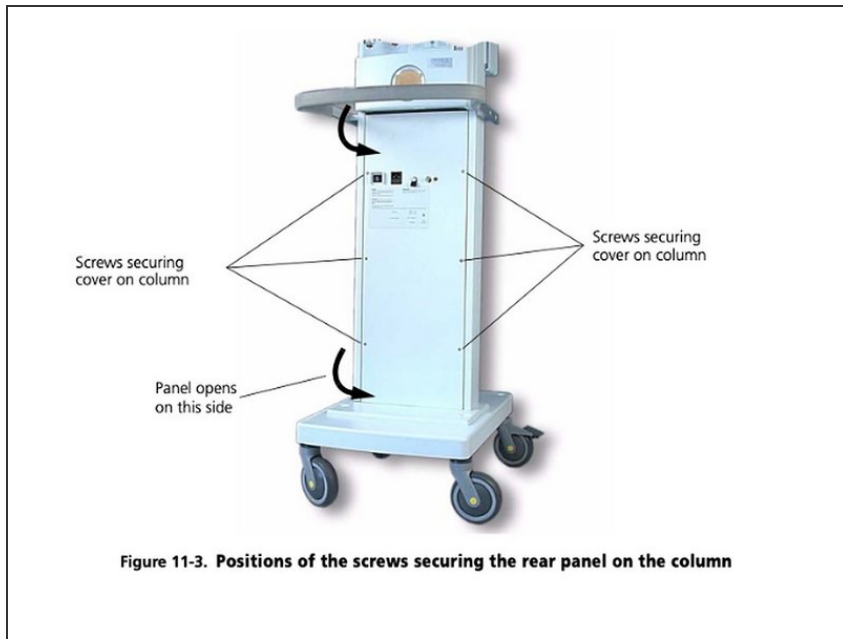
- Use a grounding cable and wrist band connected to the GALILEO or other work surface when you are working on the GALILEO.

Step 2



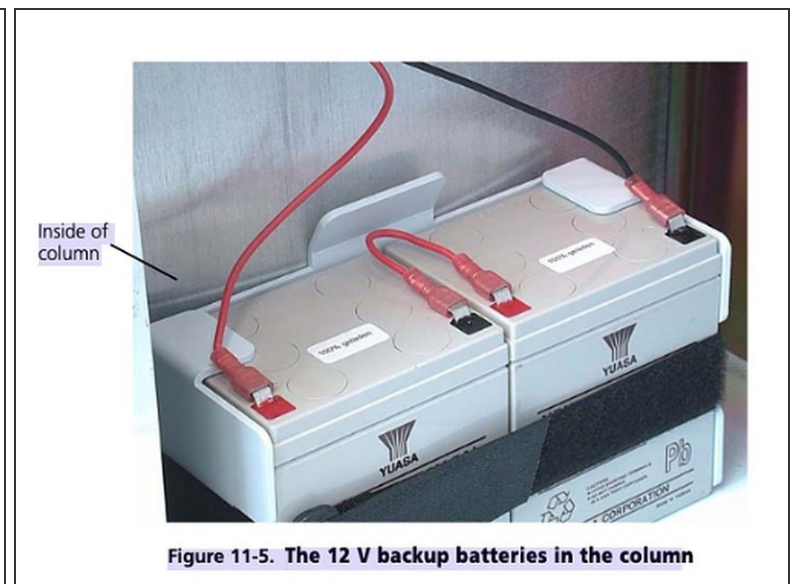
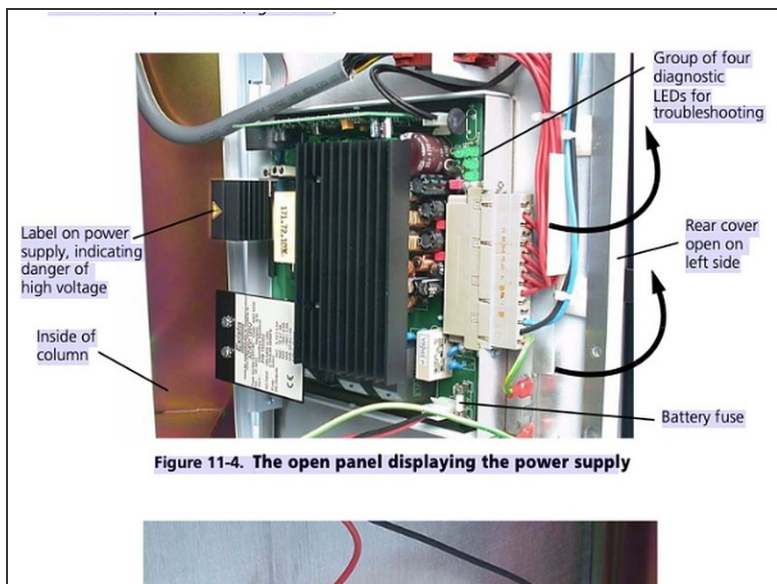
- Remove from GALILEO: External mains power supply, Air and oxygen supplies, Patient breathing circuit (for convenience only), Flow Sensor tubes (for convenience only).

Step 3



- Loosen the rear panel of the column by removing the six hexagonal-drive (Allen) screws that hold it in place.

Step 4



- Without removing any electrical connections, open the left side of the column as wide as practical.
 - ⓘ This exposes: GALILEO's internal power supply, The battery fuse, The diagnostic LEDs on the power supply's main circuit board, and the back up batteries.

Step 5



- Make sure no electrical connections are touching the column.
- Make sure all green/brown grounding (earthing) cables are securely in place.

To reassemble your device, follow these instructions in reverse order.