



# Disassembling the Board, Power Button, and Battery Compartment of an Apple Wireless Keyboard

Disassembling the battery compartment, including the board and power button.

Written By: Janne Jakob Fleischer



---

## INTRODUCTION

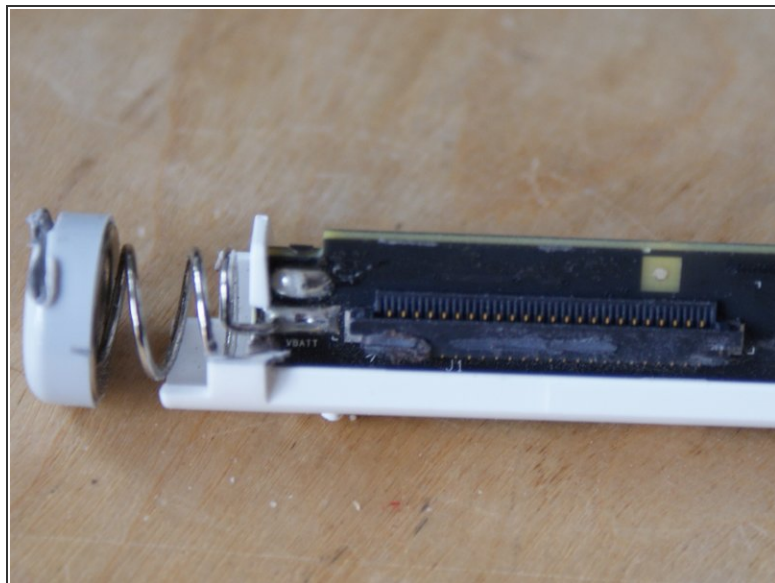
If you are experiencing issues with your wireless keyboard, this guide will show you how to disassemble the keyboard and find the issue.

---

### TOOLS:

- [Phillips #1 Screwdriver](#) (1)
-

## Step 1 — Battery Compartment



- Pinch the plastic cover while applying force equally. The cover plate should come off pretty easily.
- Note the set of clips on the long side of the cover. Pinching in at those points will allow the cover to come right off.

## Step 2



- After removing the plastic cap, remove the screw. With the keyboard lying on its face, unlock the cable connector by pulling its black plastic locking strip upwards. Then, ease out the connection cable to the keyboard foil (this can be done by inserting a strong pin under the cable and wedging it upwards).
- After that, you can push the whole inside in the direction of the power button and out of the keyboard frame.
- Reassemble the other way around: When pushing the inlay back into the frame, make sure the plastic cable to the foils is on the correct side.

To reassemble your device, follow these instructions in reverse order.