



Microsoft Surface Pro Display Replacement

Remove or replace a cracked or dead screen on a Microsoft Surface Pro.

Written By: Adam O'Camb



INTRODUCTION

Use this guide to replace a broken display on a Microsoft Surface Pro, or to remove the display for further repairs.

TOOLS:

- [iOpener](#) (1)
- [iFixit Opening Picks set of 6](#) (1)

PARTS:

- [Surface Pro Screen](#) (1)

Step 1 — Display



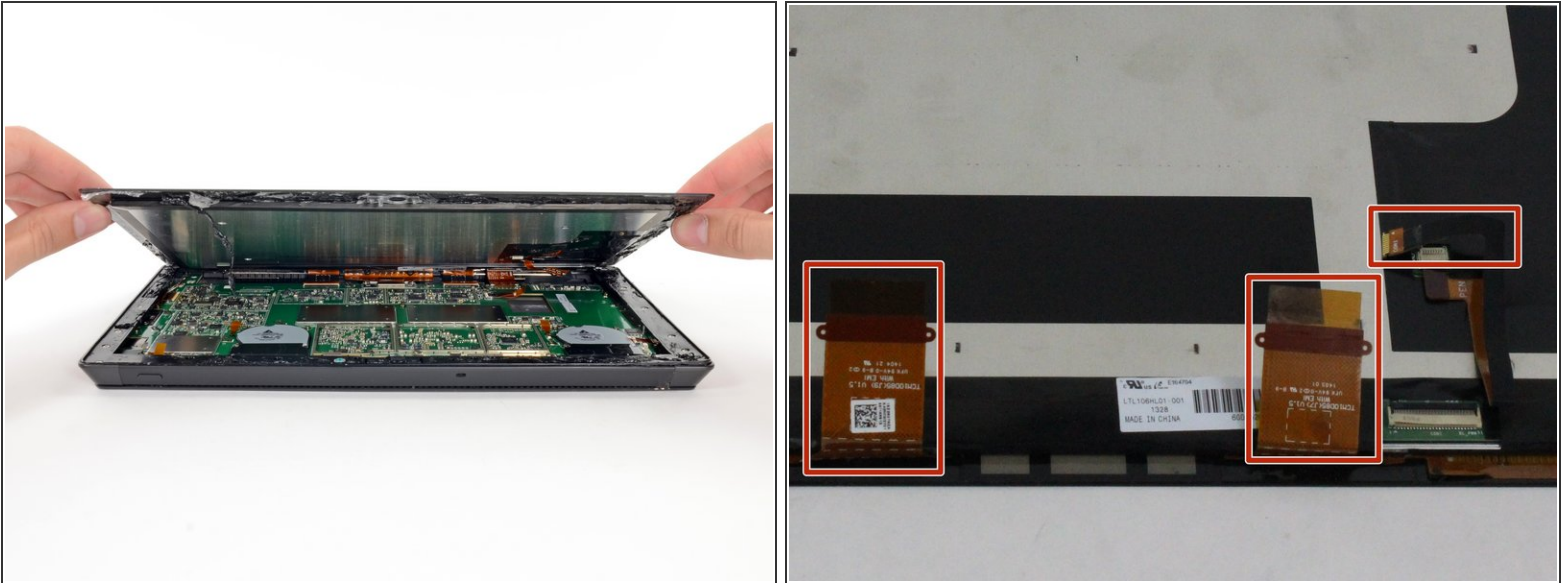
- Use a heated [iOpener](#) or a heat gun to heat the edges of the display and soften its adhesive.
- ⓘ If you're using an iOpener it may take several cycles of reheating and applying it to soften the adhesive enough. Every time, let the iOpener sit on the display for at least a minute before reheating to allow the adhesive to soften.

Step 2



- Apply a suction cup as close as possible to the edge of the display.
 - Use the suction cup to lift the edge of the display enough to insert an opening pick under the edge.
 - Slide the opening pick all the way around the edges of the display to cut through the adhesive on the bezel.
- ⚠** Do not insert the opening pick past the bezel of the display—you may permanently damage the display.
- ⚠** Be very careful and move slowly during this step. The display is fragile and will crack if too much force is applied against it. If your tools seem stuck, apply more heat to further soften the adhesive.

Step 3



- Starting from the top edge, lift the display slightly. If you feel any resistance, use heat and an opening pick to slice through any remaining adhesive.
- Before completely removing the display, disconnect the three display cables.

Step 4



- Remove the display.

To reassemble your device, follow these instructions in reverse order.