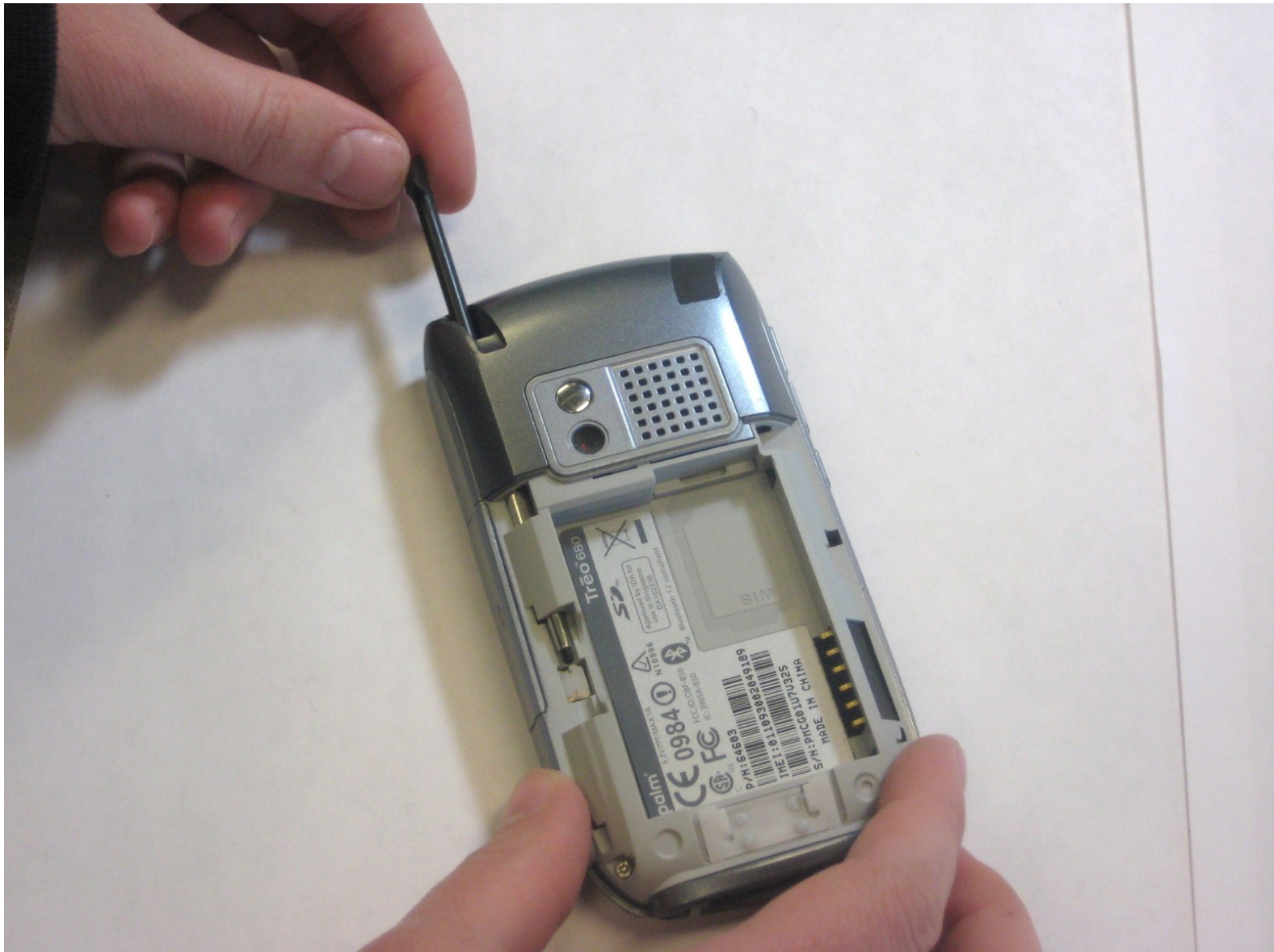




Palm Treo 680 Back Panel Replacement

Written By: Maiya123



INTRODUCTION

This guide shows you how to take off the back panel to the Palm Treo 680 in order to reach the other components within side the phone.

TOOLS:

- [T5 Torx Screwdriver](#) (1)

Some models

- [T6 Torx Screwdriver](#) (1)
 - [Tweezers](#) (1)
 - [Spudger](#) (1)
 - [Metal Spudger](#) (1)
-

Step 1 — Battery



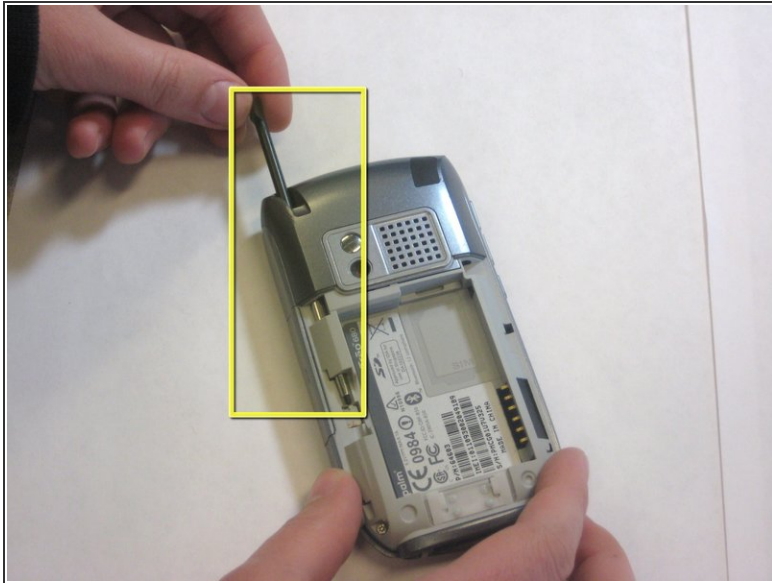
- Remove the battery cover by pressing on the small rectangular button location the back of the phone.

Step 2



- Remove the battery by pulling it out toward you.

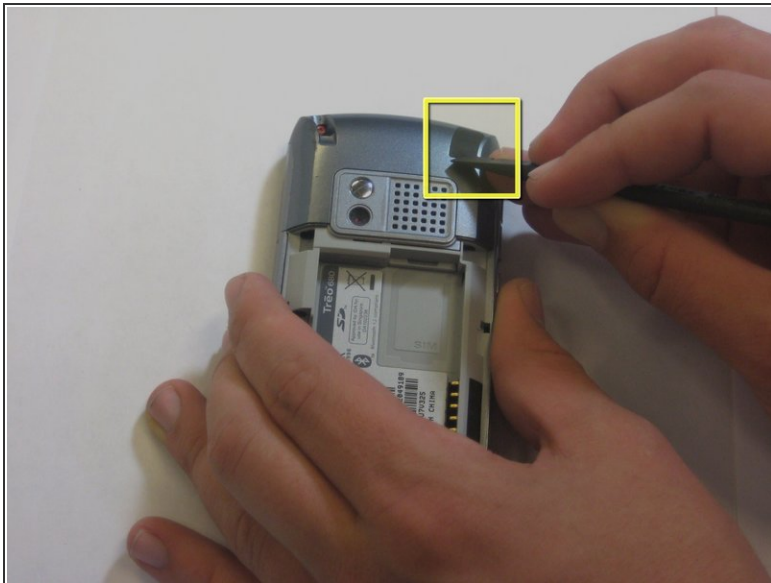
Step 3 — Back Panel



- Unscrew the 0.266 inch top-left screw with a T6 Torx Screwdriver.

☞ Be sure to remove the stylus in order to access the screw.

Step 4



- Using the spudger, remove the rubber rectangular cover located in the upper right hand side of the device.
- Unscrew the 0.266 inch screw with the T6 Torx Screwdriver.
 - ⓘ If there is a red Palm sticker covering the screw, just puncture it to access the screw.

Step 5



- Remove the remaining two 0.266 inch screws at the bottom of the device.

Step 6



- Turn the phone 90 degrees to the right, so the screen is facing the right side.
 - Use a spudger to carefully separate the back panel from the front panel to access all the various components inside the phone.
- ⚠ Separate the covers from the left side of the device as indicated in the picture. The right side contains orange ribbons that are easily damaged.

To reassemble your device, follow these instructions in reverse order.