



2010-2017 Suzuki Swift Cabin Air Filter Replacement

This guide will show how to replace the cabin air filter on a 2010-2017 Suzuki Swift.

Written By: knipwim



INTRODUCTION

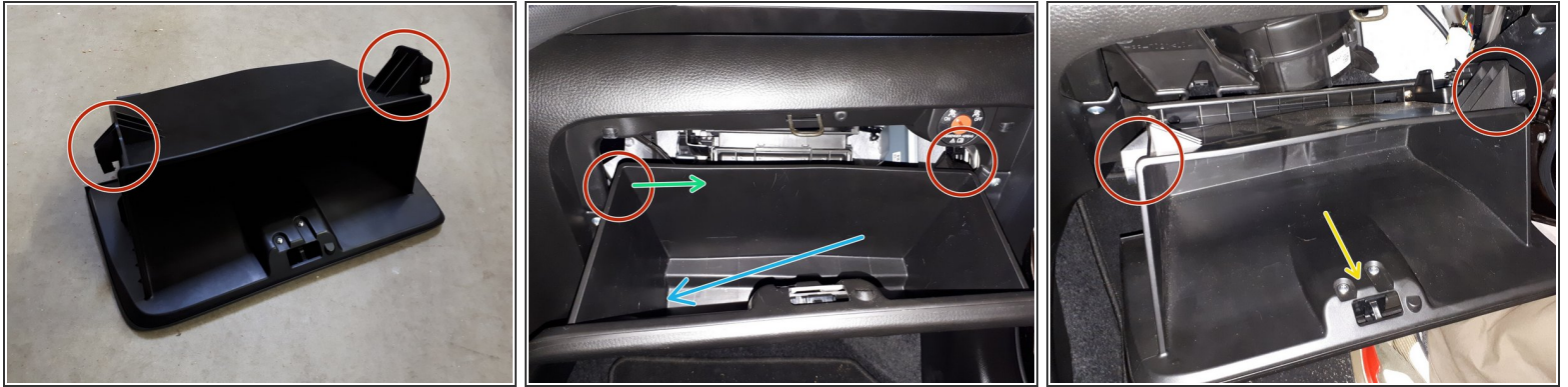
The cabin air filter needs regular replacing. For optimal effectiveness this should be done every 30.000 km or 18.000 miles. When driving in dirty or dusty conditions, this should be done sooner.



PARTS:

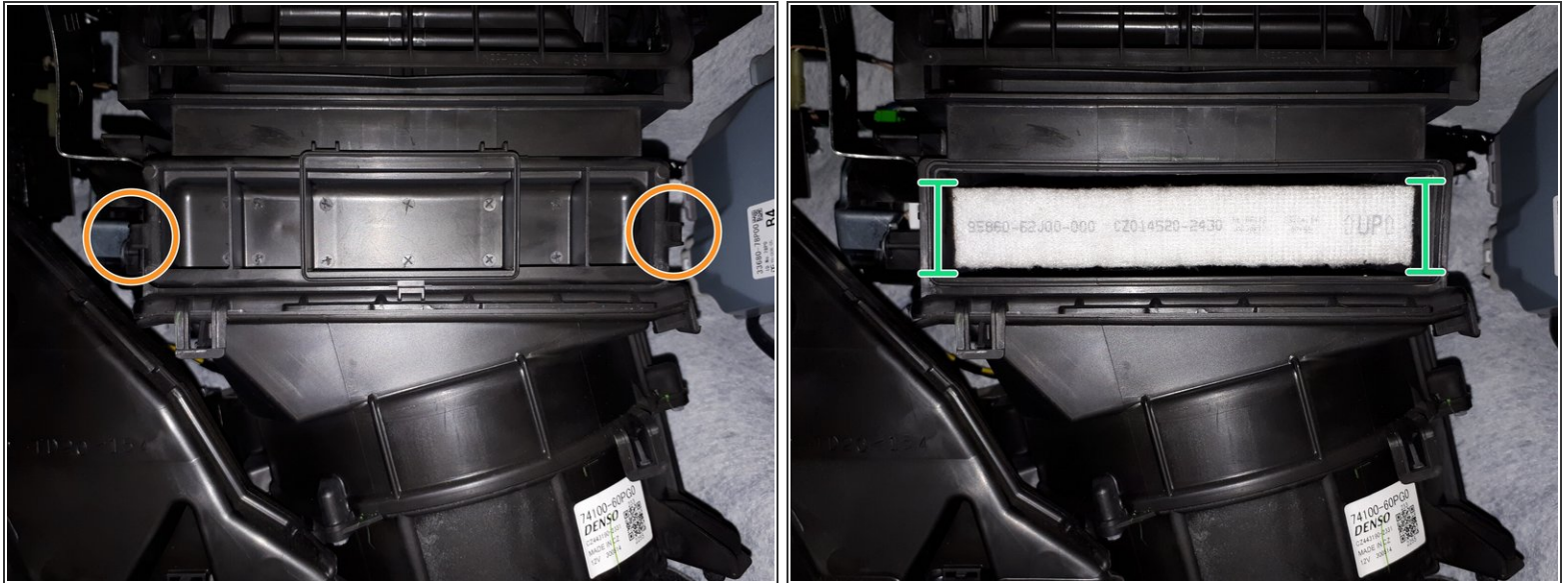
- [Cabin Air Filter](#) (1)
-

Step 1 — remove the glovebox



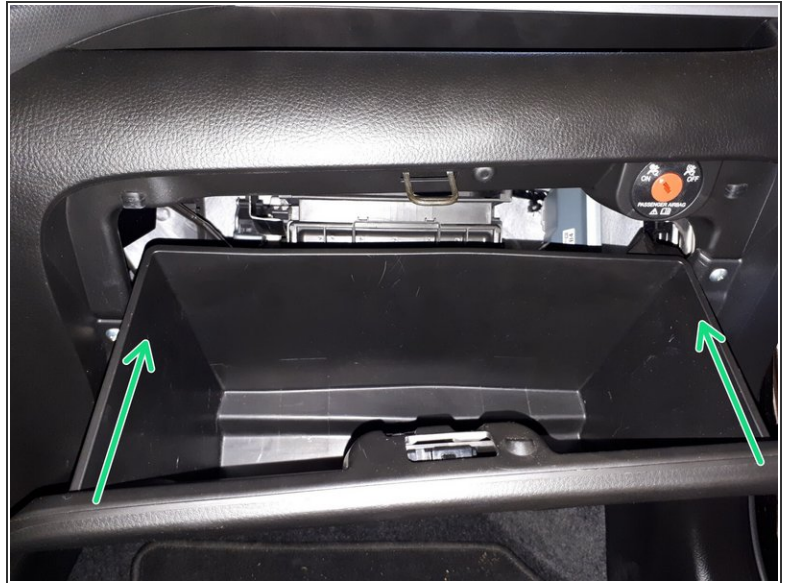
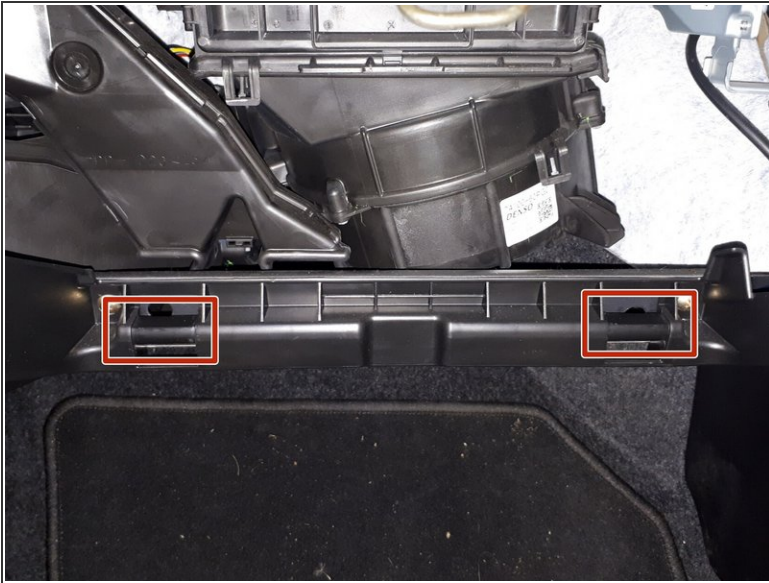
- The cabin air filter is located behind the glovebox. To access it, the glovebox needs to be removed.
- After opening, 2 supports on the back of the glovebox prevent the glovebox from falling on the floor.
- With your hands, push the left support to the right, making sure the rubber band doesn't catch on the frame.
- If the left support can move freely, pull the glovebox towards you and to the left, to also free the right support.
- Pull the glovebox towards you to pull the bottom hinges free.

Step 2 — replace the filter



- The cabin air filter can be accessed by removing the cover from the filter housing.
- Get your fingers behind the cover latches and pull the cover toward you, removing the cover.
- Pull the filter out, and prevent dirt from falling out.
- Put the new filter in, and make sure to follow the design of your filter manufacturer (air is pulled in from the top).
- Put the cover back.

Step 3 — put back the glovebox



- Put the glovebox hinge parts back into the frame hinge parts.
- Lift the glovebox and push equally on both sides to force the supports back behind the frame.