



# MacBook Pro 13" Retina Display Late 2012 AirPort Board Assembly Replacement

Prereq for Display Assembly.

Written By: Walter Galan



---

## INTRODUCTION

Prereq for Display Assembly.

---

### TOOLS:

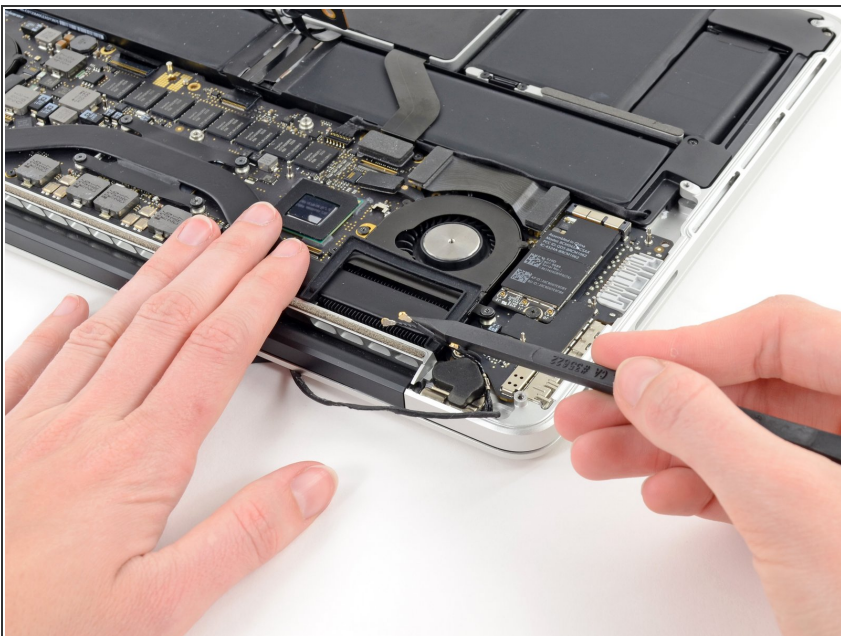
- [Spudger](#) (1)
-

## Step 1 — AirPort Board Assembly



- Use the flat end of a spudger to pry and disconnect the three antenna cable connectors from the AirPort board.
- The three cables are coded with black sleeves of different lengths. During reassembly:
  - Connect the long-sleeved cable to the socket closest to the ports.
  - The short-sleeved cable connects next to the screw.
  - The remaining cable has no sleeve, and connects in the last empty socket, next to the fan.

## Step 2



- Move the antenna cables aside, clear of the AirPort board.

To reassemble your device, follow these instructions in reverse order.