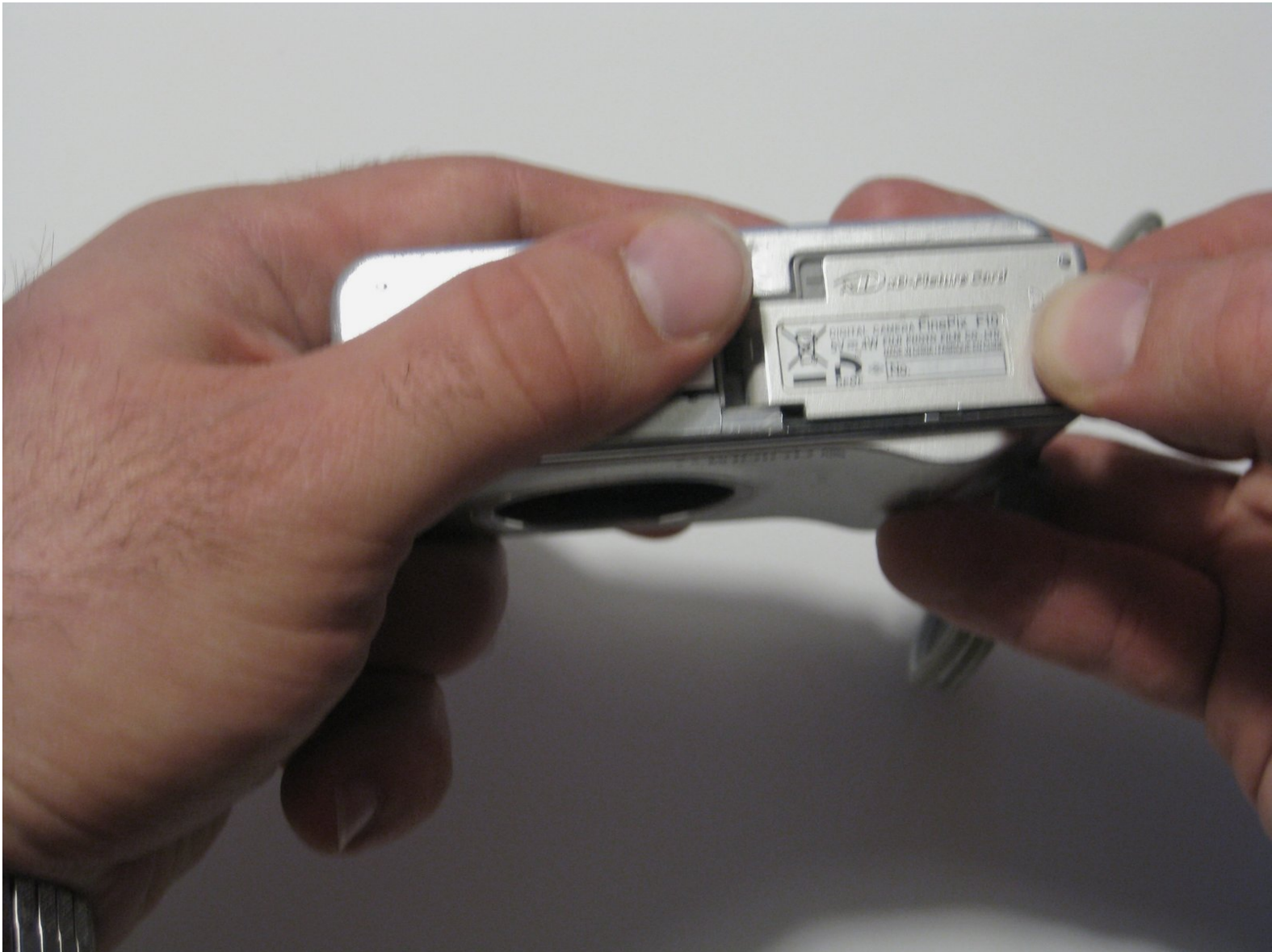




Fujifilm Finepix F10 6.3 MP Battery Replacement

If camera is not holding charge, the guide will enable users to install a new battery.

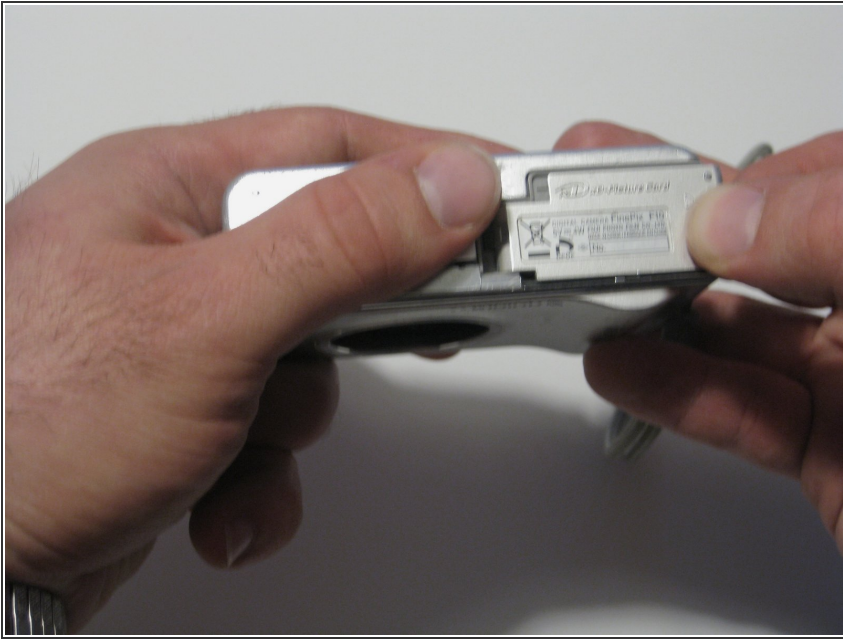
Written By: Sarah Looper



INTRODUCTION

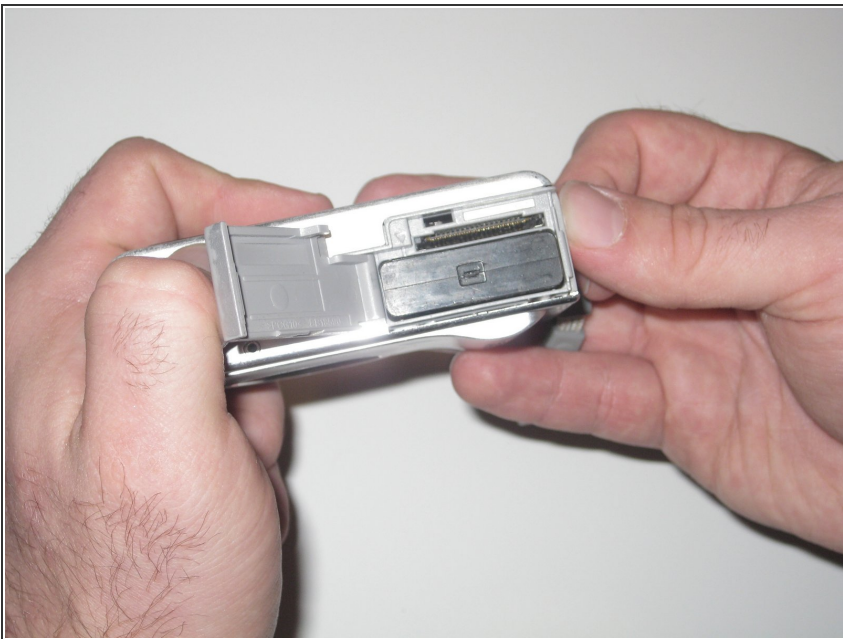
The battery is the power source for the camera and is easily accessible. No tools are required.

Step 1 — Battery



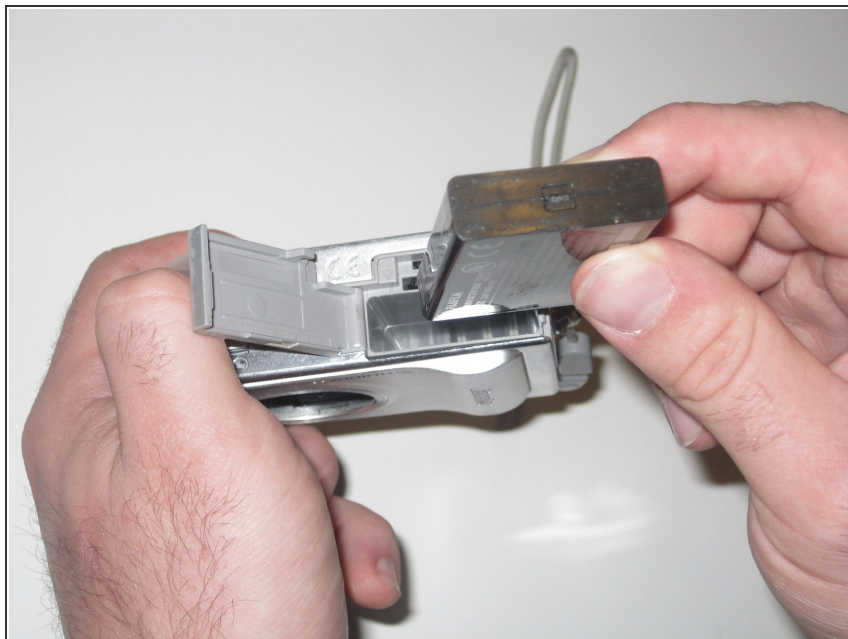
- Press down and slide the battery cover.

Step 2



- Lift open the battery cover.

Step 3



- Remove the battery.

To reassemble your device, follow these instructions in reverse order.