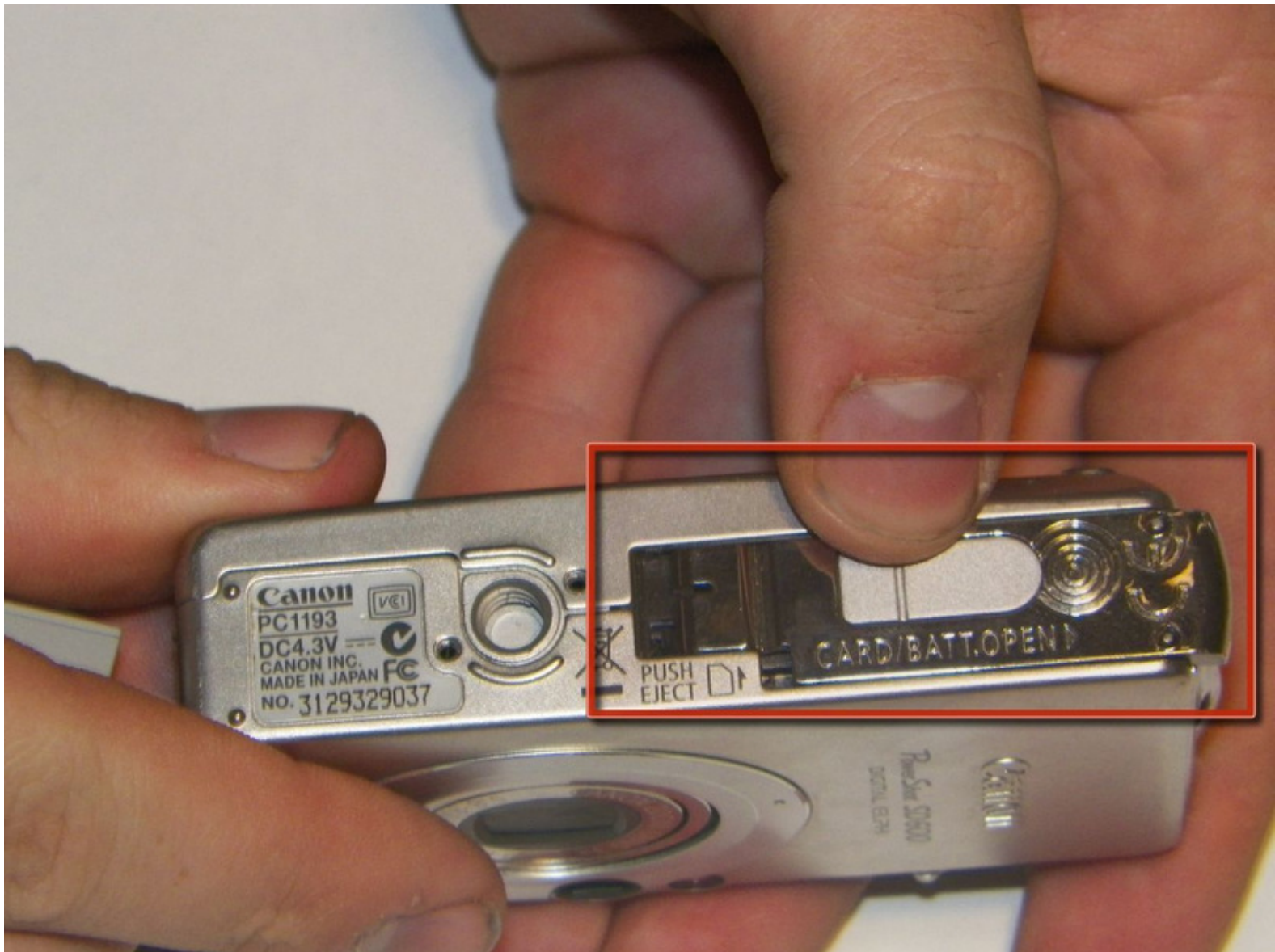




Canon PowerShot SD 600 Battery/SD Card Replacement

Use this repair guide to replace a battery or SD Card on a Canon PowerShot SD 600.

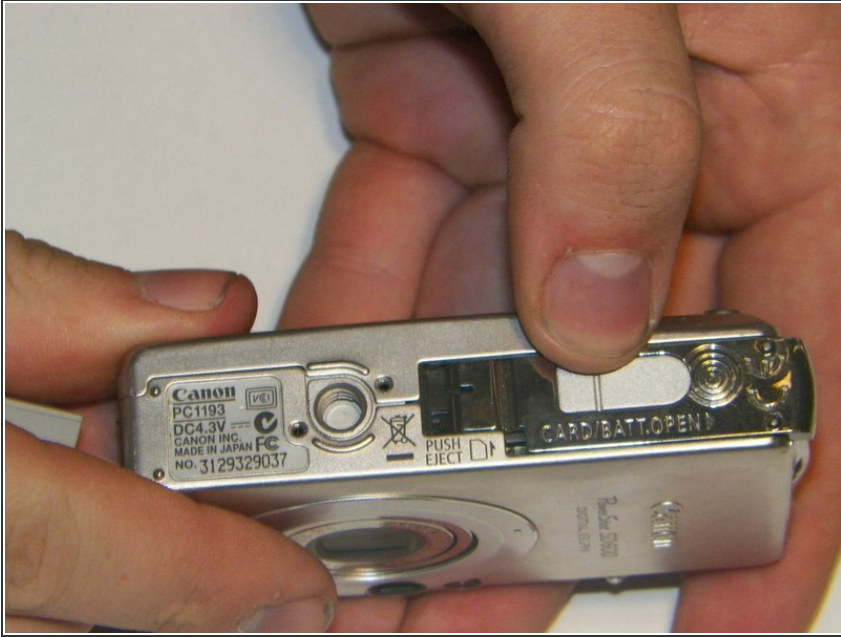
Written By: Krystal Eades



INTRODUCTION

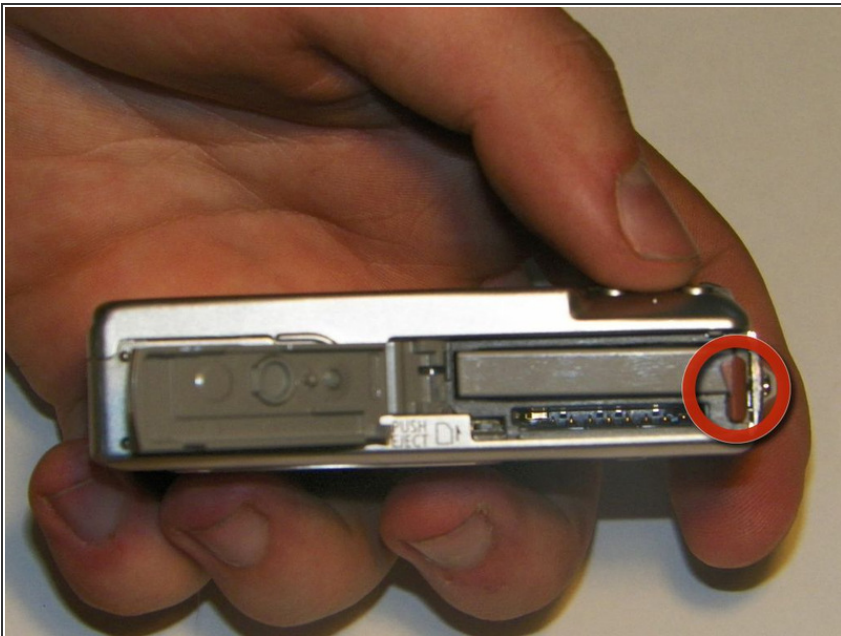
This guide is a walk-through of the process to replace a dead, dying, or incorrectly placed battery and an SD card in a Canon PowerShot SD 600.

Step 1 — Battery/SD Card



- Turn the camera over so that the battery compartment is visible. The compartment should read "Card/Batt. Open".
- Open the compartment.
 - Lightly push the compartment lid down and outward. The arrow next to "Card/Batt. Open" indicates the direction you should be pushing.

Step 2



- Once the lid is open, the battery and SD card compartments become visible.
- Notice the red tab on the right side of the battery.
 - Slide this tab off the battery.
 - The battery is now free to slide out of the compartment.
- ⓘ The battery will not pop out of the compartment. The camera needs to be tilted in order to slide the battery out.

Step 3



- To remove the SD card push it down and it will eject out. (SD card not shown)
- ★ Be sure the new or recharged battery is facing the correct direction. An arrow on the battery indicates which end should be inserted into the compartment first.
- i If you plan on disassembling the camera further, you should leave the battery and SD card removed. Make sure to close the battery compartment once the battery and the SD card are removed.

To reassemble your device, follow these instructions in reverse order.

This document was last generated on 2017-06-24 03:42:39 AM.