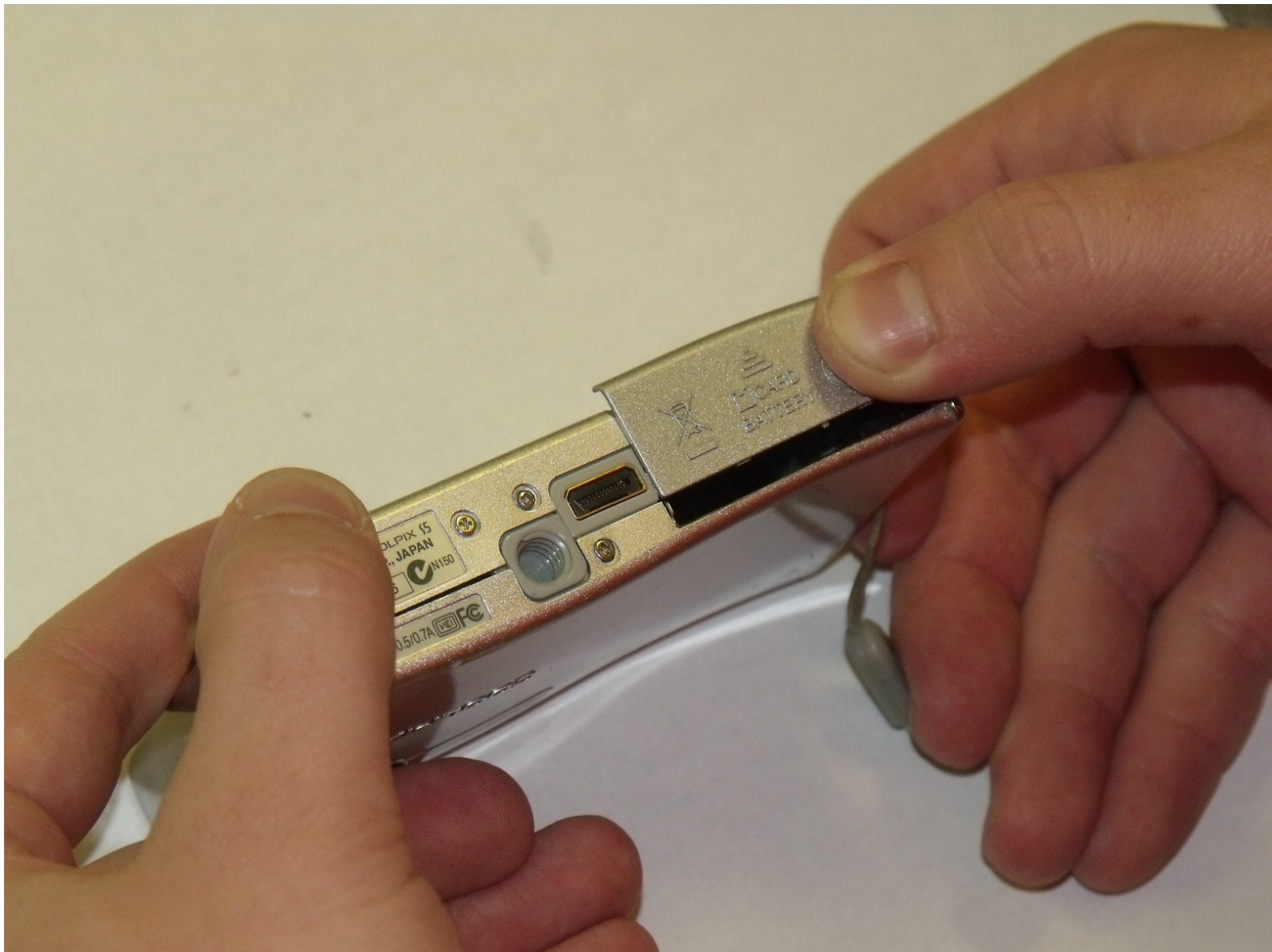




Nikon CoolPix S5 SD Card Replacement

This guide demonstrates how to install a SD card into the Nikon CoolPix S5 camera.

Written By: Josh Miller



INTRODUCTION

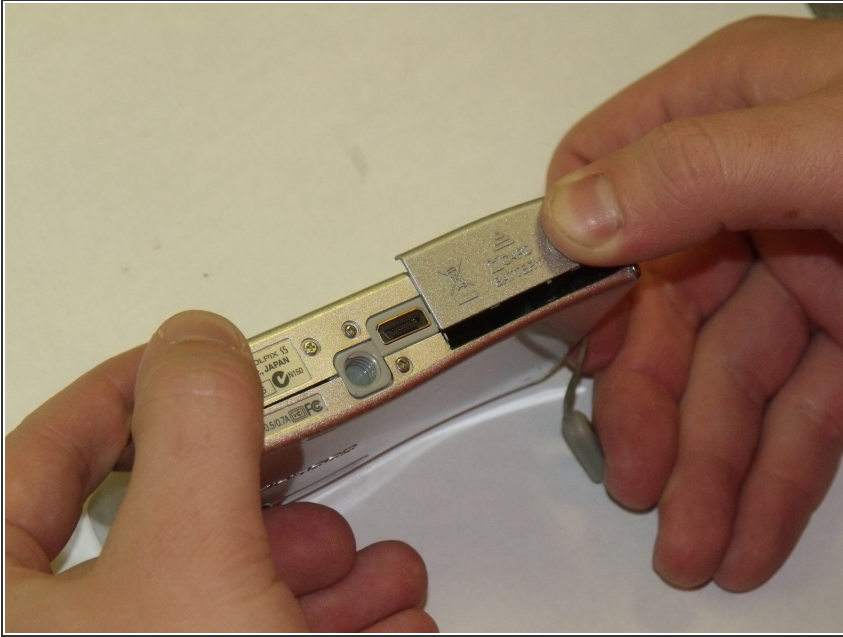
This guide is to be used to install the SD card in the case that the SD card is damaged or no longer functions properly due to overuse. A Phillips screwdriver will be needed to complete this installation.



PARTS:

- [SD Card](#) (1)
-

Step 1 — SD Card



- Using the thumb, firmly push the Battery/SD cover in the middle and in the direction of the arrow on the Battery/SD cover.
- This will cause the Battery/SD cover to pop open.

Step 2



- Press down on the SD card. This will cause it to eject, thus enabling it to be removed.

To reassemble your device, follow these instructions in reverse order.

This document was last generated on 2017-07-16 07:23:37 AM.