



G'z One Boulder Inside Screen Cover Replacement

This shows how to replace the screen and cover that protect the inside LCD display.

Written By: Henry Johnson



INTRODUCTION

There are two LCD displays on this phone. When the phone is opened, the inside display has a cover with a piece of protective glass glued to it. Since this phone is designed to be water-resistant, breaking the factory seal made by the glue is not recommended as it may expose the inner electronics to moisture. This guide treats the glass and cover as a single part.

TOOLS:

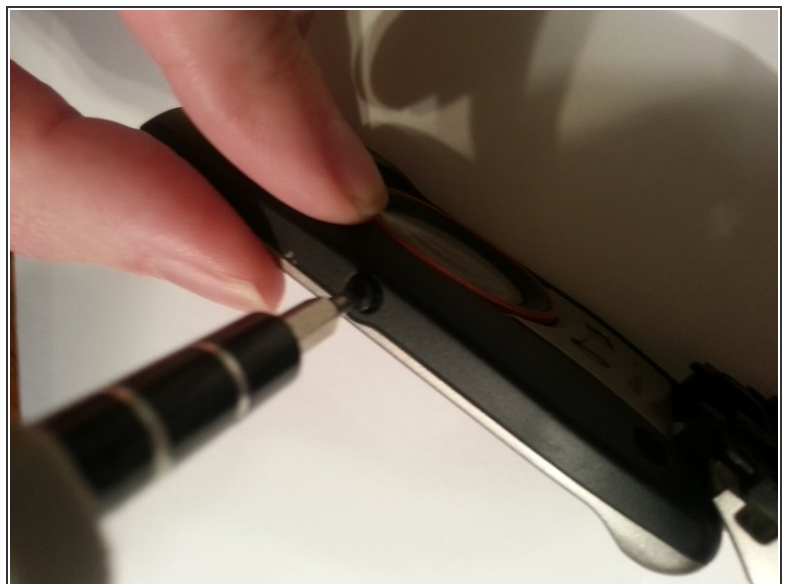
- [Flathead 3/32" or 2.5 mm Screwdriver](#) (1)
-

Step 1 — Inside Screen Cover



- There are 4 black screws that need to be removed on the top of the lid. A 1.5mm flathead screwdriver will work on the star shaped screw heads.
- ⓘ Make note that two of the screws closest to the hinge are longer than the other two.

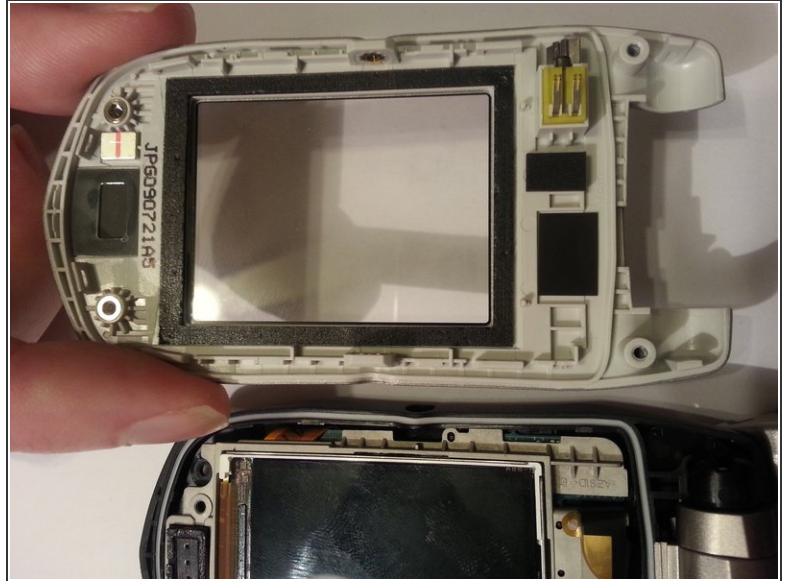
Step 2



- Remove the two side screws.

ⓘ *When reassembling you may need to press the front and back of the lid together when inserting these side screws so that the holes align.*

Step 3



- Use a plastic opening tool to remove the screen cover from the rest of the lid.

Step 4



- Your phone should look like the picture to the left.
- ☑ *If reassembling from a previous step make sure the ribbon cable is properly situated before securing the front cover.*

To disassemble your device, follow these instructions in reverse order.