



# Minolta Dimage Xt Casing Replacement

This guide explains how to remove the outer casing of the camera.

Written By: Megan Milam



## INTRODUCTION

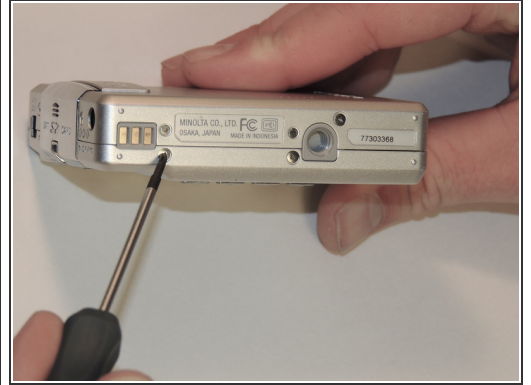
The outer casing of the camera is the first step to fixing any internal hardware. It is essential that the outer casing is in proper condition and not damaged to ensure the integrity of the internal components.

---

### TOOLS:

- [Phillips #00 Screwdriver](#) (1)
-

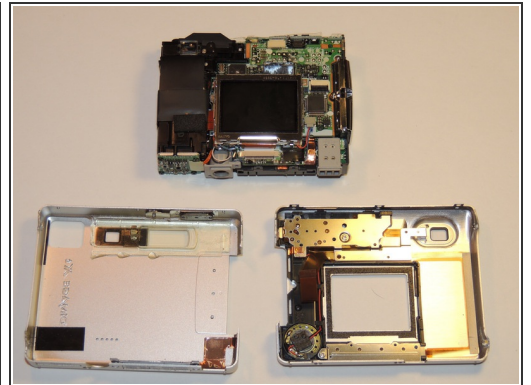
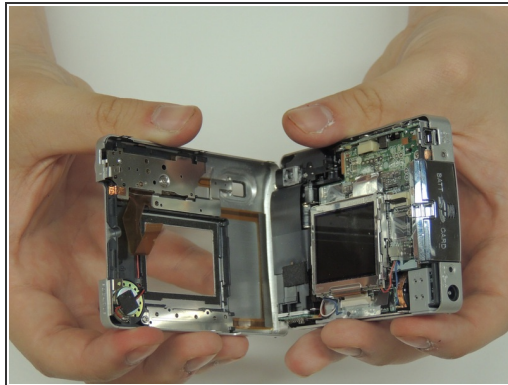
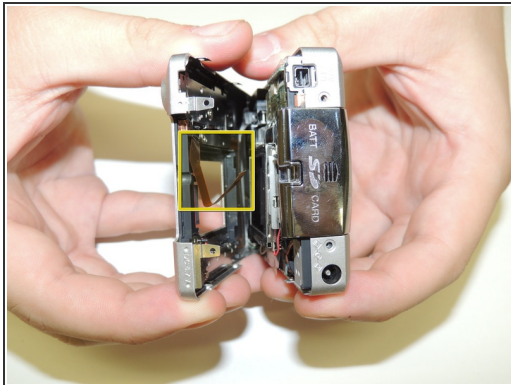
## Step 1 — Casing



- Locate and remove the silver screws on each side of the camera.

**i** Use the Phillips #00 Screwdriver to unscrew all 2.0mm (4 instances) and 4.0mm (2 instances) screws.

## Step 2



- Then, carefully pry apart the front and back outer casing away from the internal components.

**!** Be aware of the ribbon wire that will disconnect when the casing is detached.

To reassemble your device, follow these instructions in reverse order. The outer casing must be properly in place and screws tight to protect the internal hardware.

This document was last generated on 2017-07-13 02:39:57 PM.