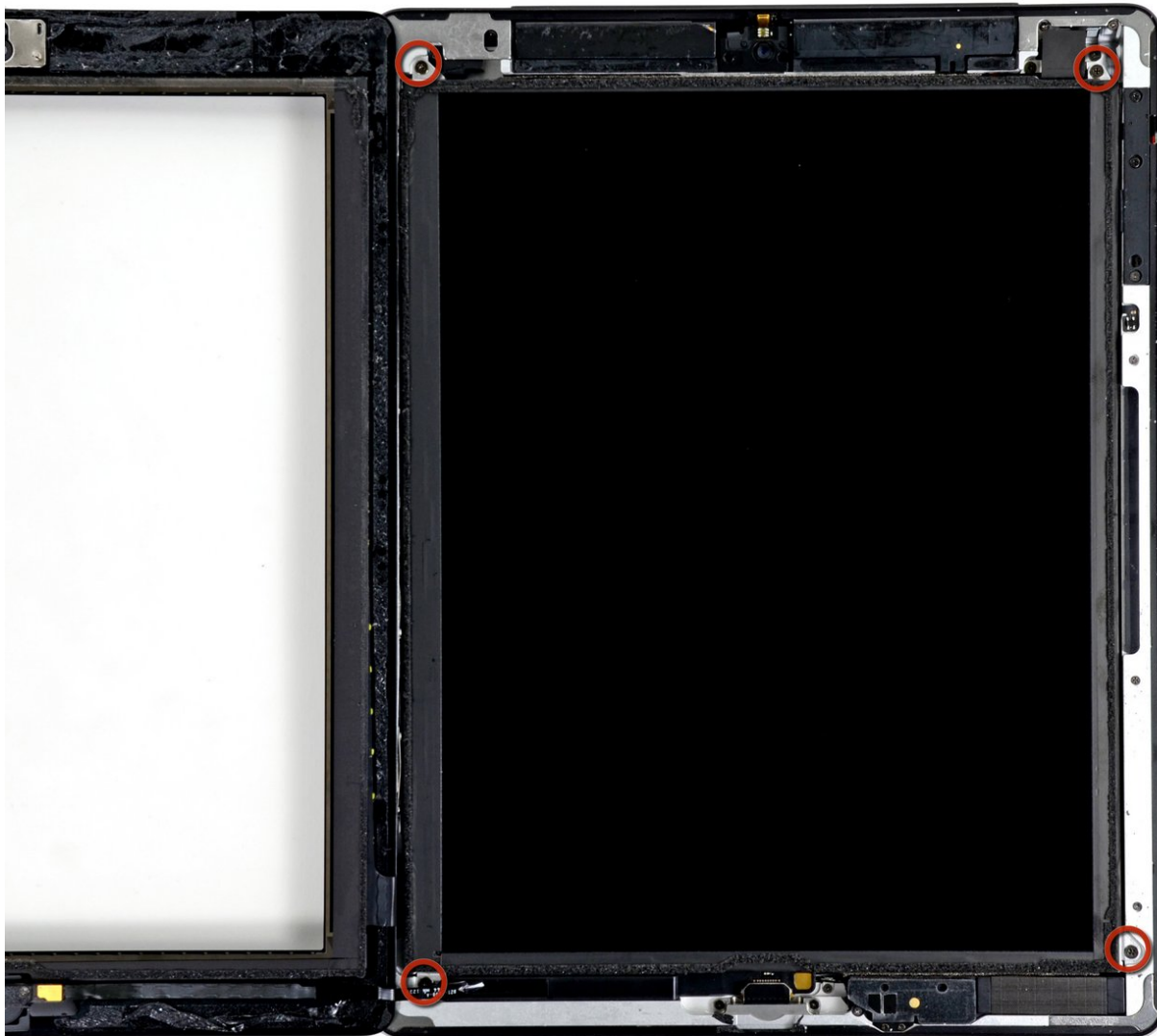




# iPad 4 CDMA Front Panel Assembly Replacement

Preq for removing the front panel. Specific to the iPad 4, also involves moving the LCD over.

Written By: Walter Galan



---

## INTRODUCTION

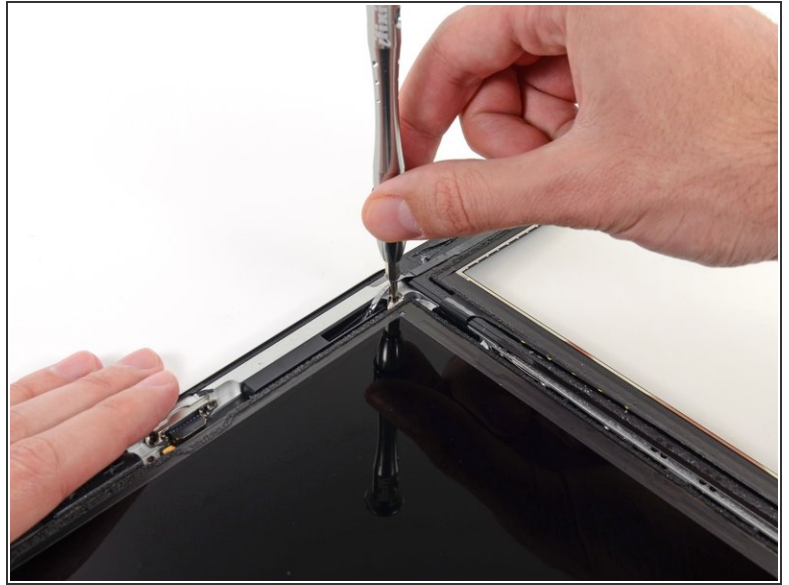
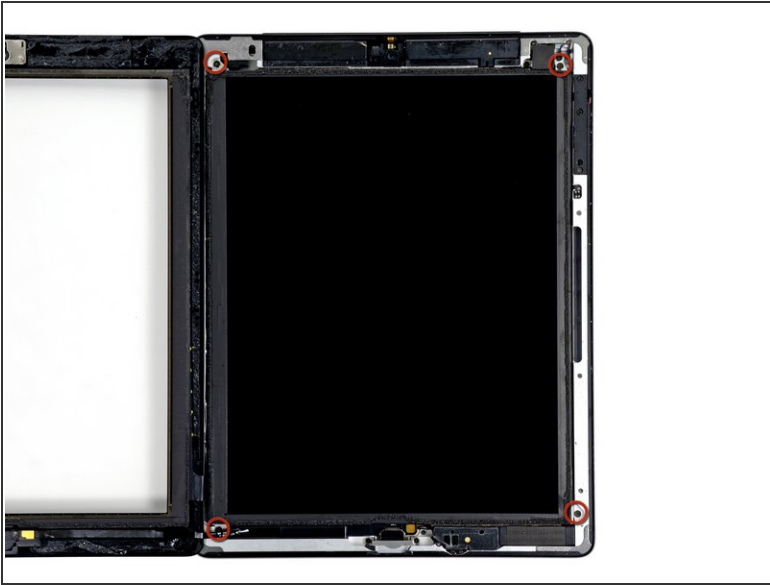
Preq for removing the front panel. Specific to the iPad 4, also involves moving the LCD over.

---

### TOOLS:

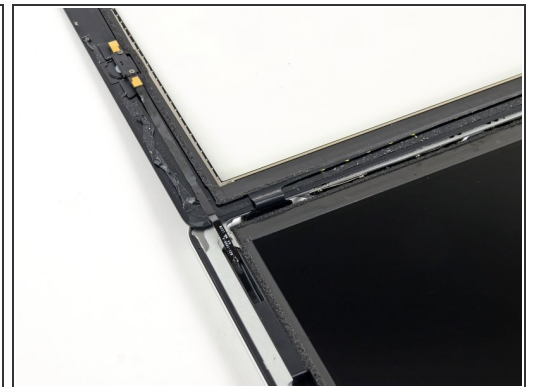
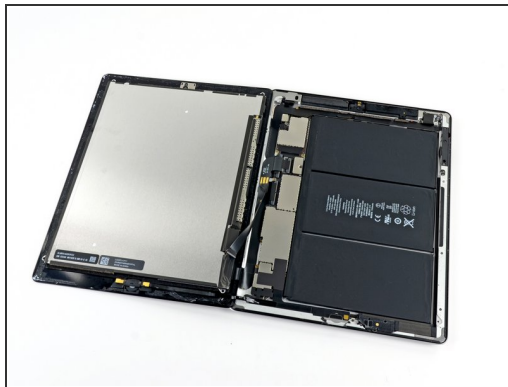
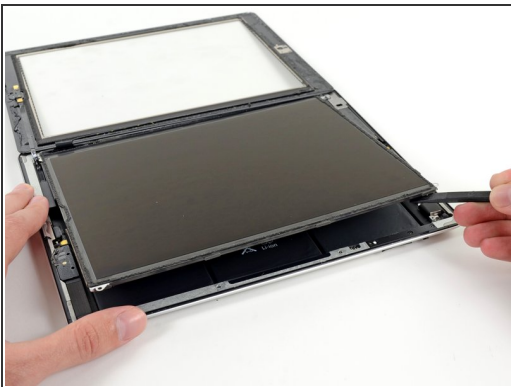
- [Phillips #00 Screwdriver](#) (1)
  - [Spudger](#) (1)
-

## Step 1 — Front Panel Assembly



- Remove the four 2 mm Phillips #00 screws securing the LCD to the aluminum frame.
- ⓘ The bottom left screw is obscured by the home button ribbon cable connector. Carefully move the home button ribbon cable aside to remove the bottom left screw.

## Step 2



- Using a plastic opening tool or a spudger, lift the right edge of the LCD out of the iPad.
- Rotate the LCD along its left edge and lay it down on top of the front glass panel.
- ⚠ Be careful as you move the LCD. The ribbon cable is fragile and may break if it is flexed too much.

To reassemble your device, follow these instructions in reverse order.