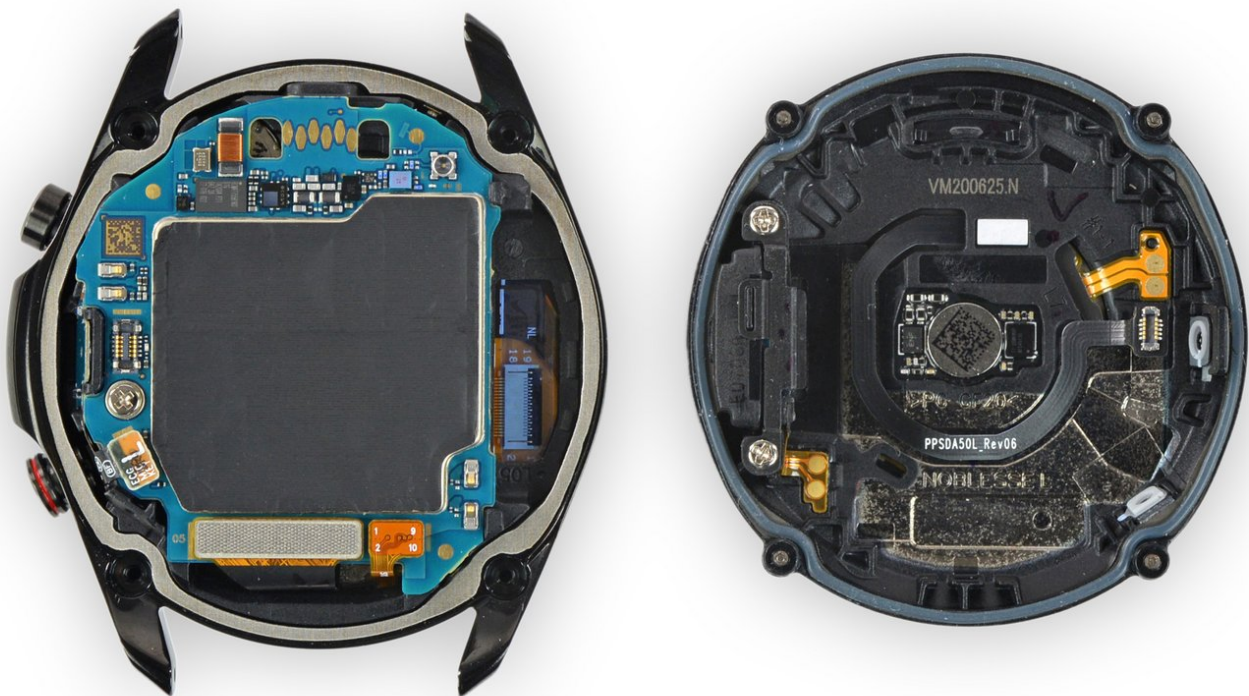




# Opening the Galaxy Watch3

This guide shows how to remove the back cover of the Samsung Galaxy Watch3.

Written By: Tobias Isakeit



---

## INTRODUCTION

Use this guide to remove the back cover of the Samsung Galaxy Watch3.

---

### TOOLS:

- [iFixit Opening Tools](#) (1)
  - [Tri-point Y00 Screwdriver](#) (1)
  - [Spudger](#) (1)
-

## Step 1 — Unfasten the back cover screws



- Before starting repairs, take your watch off the charger and power it down.
- Use a Tri-point Y00 driver to unfasten the four screws on the back of the watch.
- ⓘ Don't worry about removing the screws, they will stay in place in the back cover.

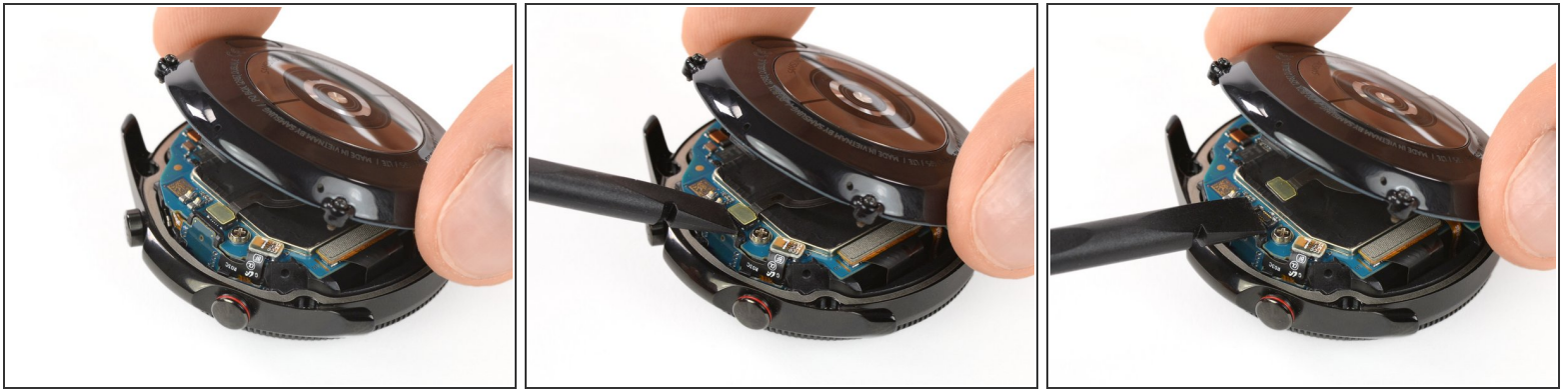
## Step 2 — Wedge open the back cover



- Insert an opening tool between the back cover and the metal housing.
- Twist the opening tool to create a wider gap.

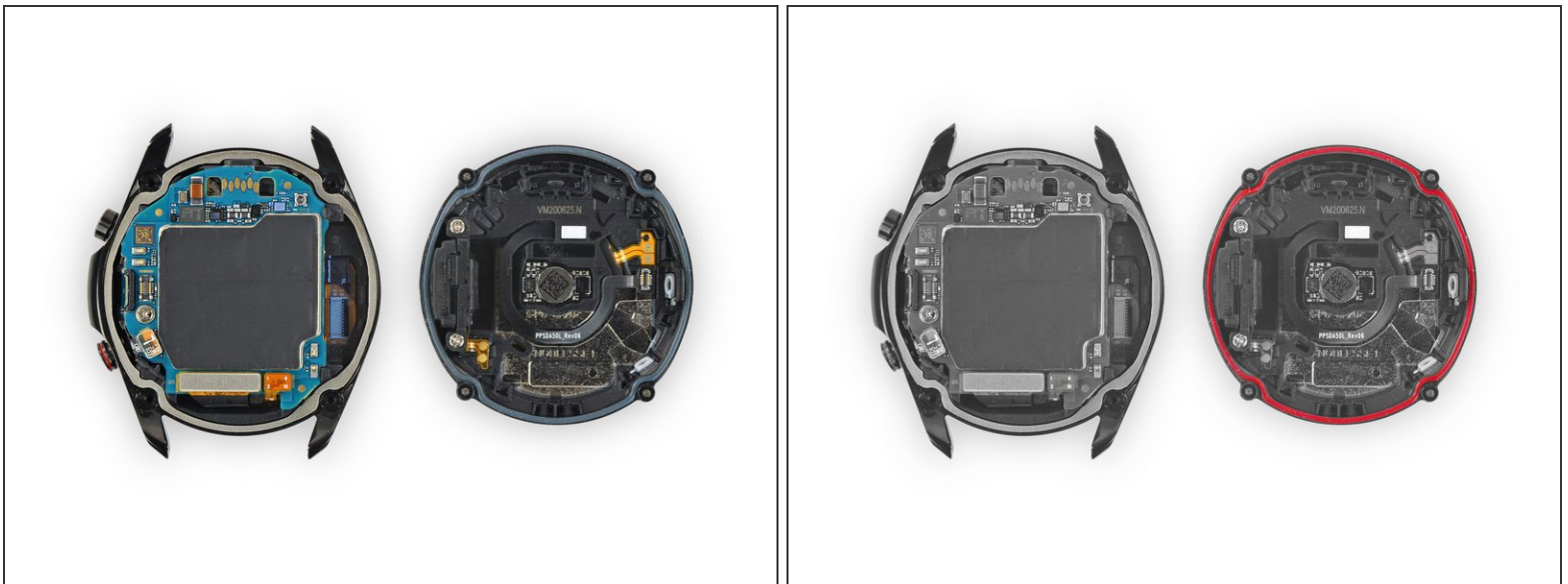
**⚠** Don't fully remove the back cover just yet. The sensor flex cable is still connected to the motherboard.

### Step 3 — Disconnect the sensor flex cable



- Lay the watch face down.
- Carefully lift the back cover up from the edge with the buttons to access the sensor connector.
- Use the flat end of a spudger to pry up and disconnect the sensor flex cable from the motherboard.

### Step 4 — Remove the back cover



- Remove the back cover.
- ☑ Make sure the rubber gasket (marked red) is undamaged. If damaged replace it with a new one during reassembly to maintain proper water resistance.

To reassemble your device, follow these instructions in reverse order.