



How to Fix a Ripped Belt Loop on a Pair of Jeans

This guide will be going over how to repair a torn belt loop on a pair of jeans. It is designed only if one side of the belt loop is torn off.

Written By: Aaron Hogan



INTRODUCTION

If your belt loop on a run of the mill pair of pants has become torn due to an exterior force, use this guide to reattach the torn belt loop back onto your pair of pants.

A belt loop allows the wearer to guide a belt through each loop around their waist as they are wearing a pair of pants. This is to secure the belt in an optimal spot to keep the wearer's pants on their body.

Before beginning, wash the pair of pants to avoid any dirt being sewn into the pair of pants and to avoid the needle becoming stuck on any foreign object which will make it harder to sew.

Be sure to not attempt a repair while you or someone else is wearing the pair of pants that will be repaired so that you or another does not get pricked by the sewing needle when you sew the belt loop down on steps 4-5.

TOOLS:

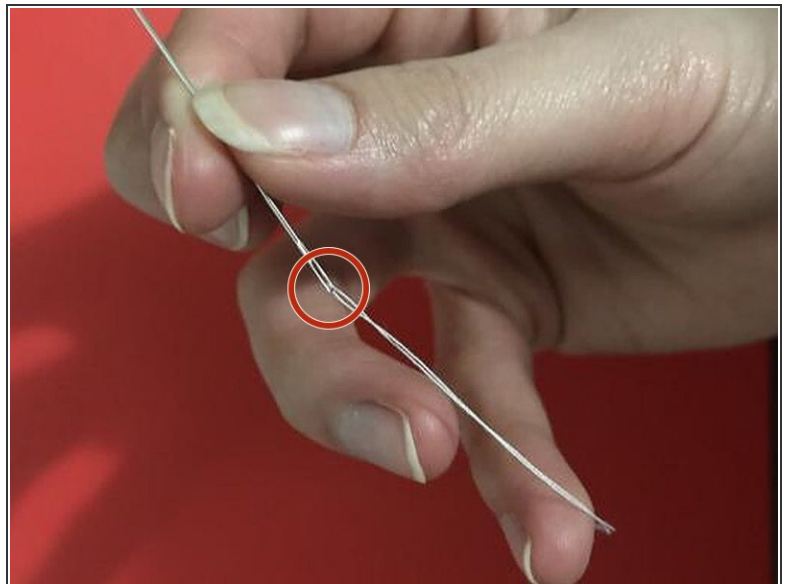
- [Scissor](#) (1)
 - [Thread](#) (1)
 - [Hand Sewing Needle](#) (1)
-

Step 1 — How to Fix a Ripped Belt Loop on a Pair of Jeans



- Identify where on the pair of pants/jeans the belt loop has been torn.

Step 2



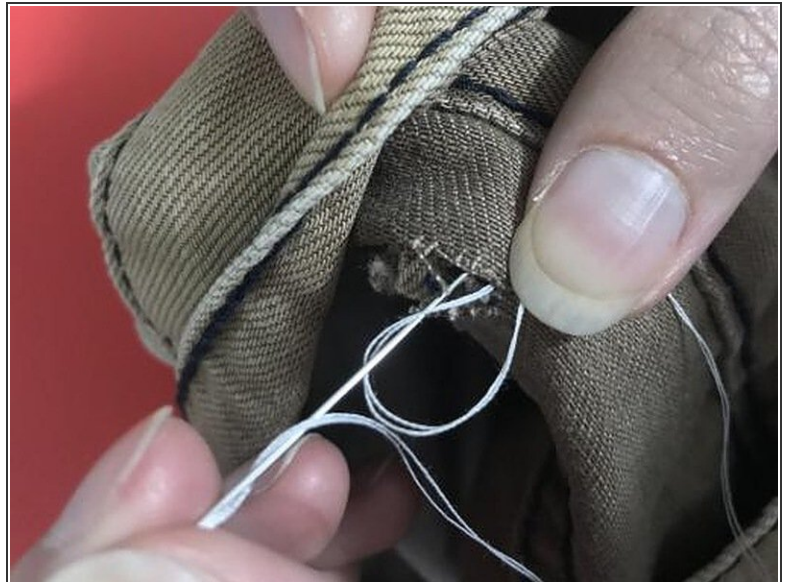
- Thread one end of the thread through the eye hole at the top of the needle.
- ⓘ The thread must be through the eye of the needle as shown with extra thread past the eye or else the thread will fall out during sewing.

Step 3



- Push the needle through from the back to the front of the pants making sure to pierce both the belt loop and the pants.

Step 4



- Repeat the process in and out of the pants.
- When you get to the right end of the belt loop continue the process back to where you began.

Step 5



- Tie the thread together three to four times with a basic knot and cut the excess.
- Tug the belt loop to check if it is secure.
- ⓘ If the belt loop does not budge you have successfully followed this guide.
- ⓘ If it does not budge you will need to remove the thread and restart from Step 3.

To reassemble your device, follow these instructions in reverse order.