



iBook G3 14" Airport Card Replacement

Written By: iRobot



INTRODUCTION

Install an original Airport 802.11b card internally.



TOOLS:

- [Coin](#) (1)
- [Flathead 3/32" or 2.5 mm Screwdriver](#) (1)



PARTS:

- [Airport Card](#) (1)
-

Step 1 — Battery



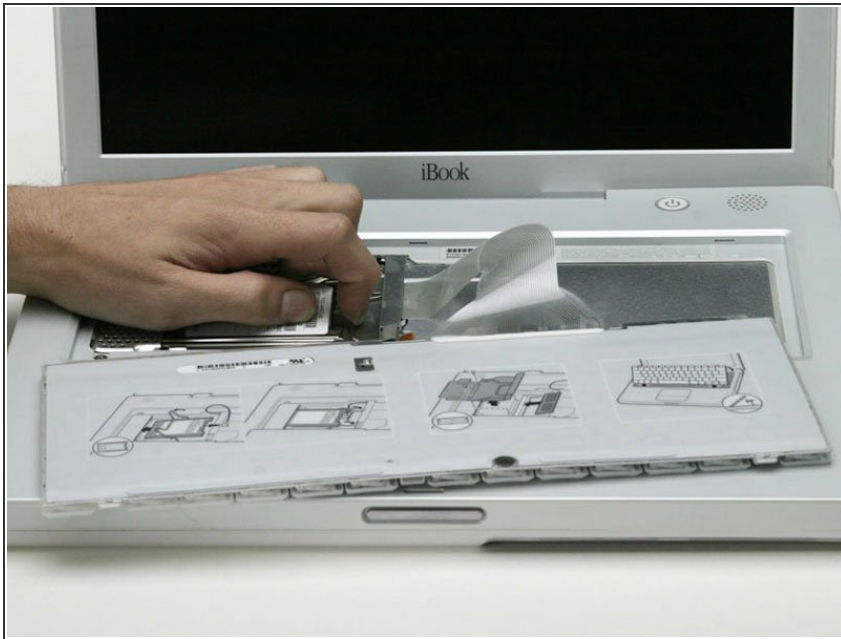
- Use a coin to rotate the battery locking screw 90 degrees clockwise.
- Lift the battery out of the computer.

Step 2 — Airport Card



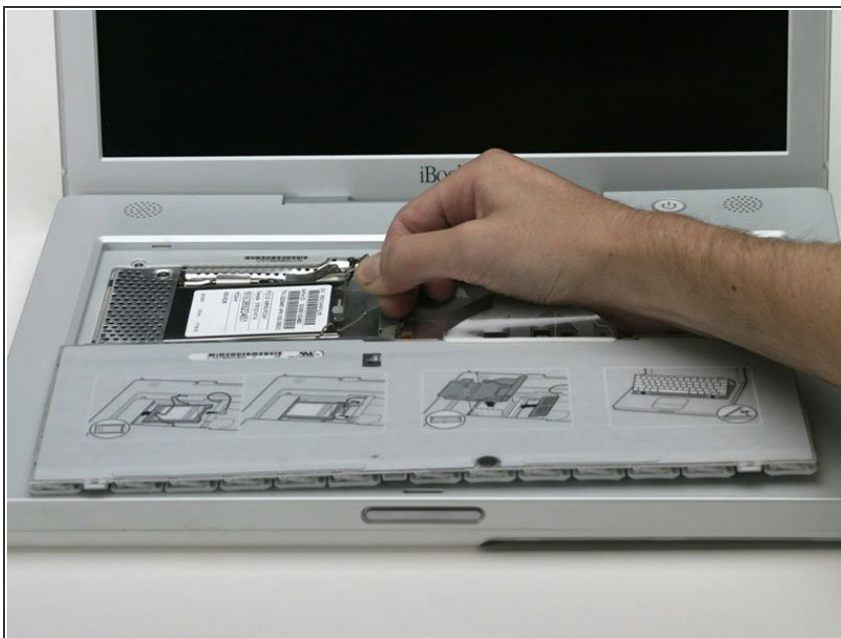
- Pull the keyboard release tabs toward you and lift up on the keyboard until it pops free.
- If the keyboard does not come free, use a small flathead screwdriver to turn the keyboard locking screw 180 degrees in either direction and try again.
- Flip the keyboard over, away from the screen, and rest it face-down on the trackpad area.

Step 3



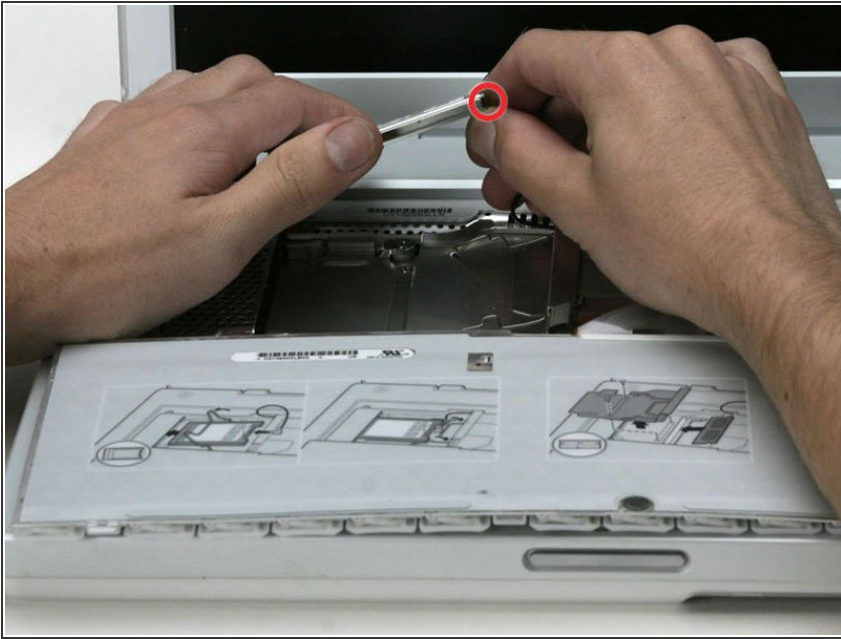
- **i** If your computer does not have an Airport card installed, skip to the RAM shield removal step.
- Push the wire clasp toward the Airport card and pull it up to free it from the RAM shield.

Step 4



- Grasp the clear plastic tab on the Airport card and pull toward the right.

Step 5



- Hold the Airport card in one hand and use your other hand to remove the antenna cable.

To reassemble your device, follow these instructions in reverse order.