



iPad 4 CDMA SIM Tray Replacement

Replace the SIM Tray in your iPad 4 CDMA.

Written By: Walter Galan



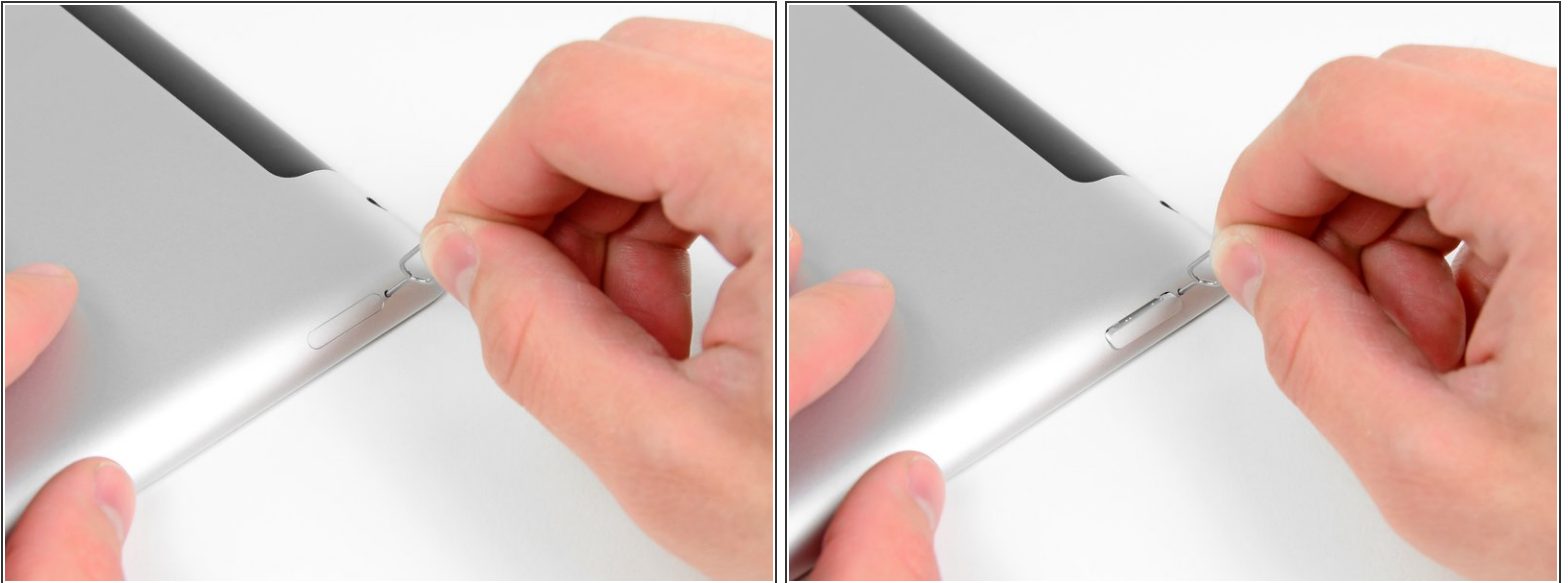
INTRODUCTION

Use this guide to remove the SIM tray.

TOOLS:

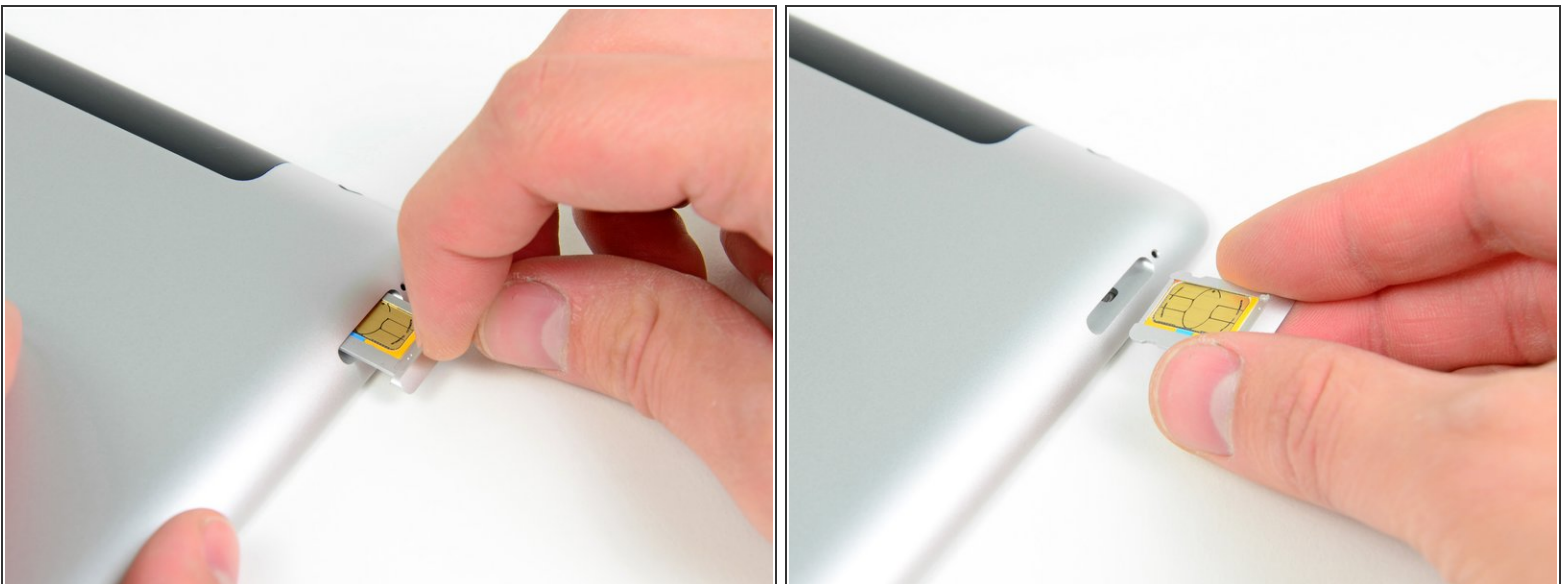
- [SIM Card Eject Tool](#) (1)
-

Step 1 — SIM Tray



- Use a SIM eject tool or an uncoiled paperclip to eject the SIM tray.

Step 2



- Pull the SIM tray out of its slot and remove it from the iPad.
- ☑ If replacing the SIM card, pop it out of its tray and install the new one.

To reassemble your device, follow these instructions in reverse order.

This document was last generated on 2019-07-09 01:58:38 PM.