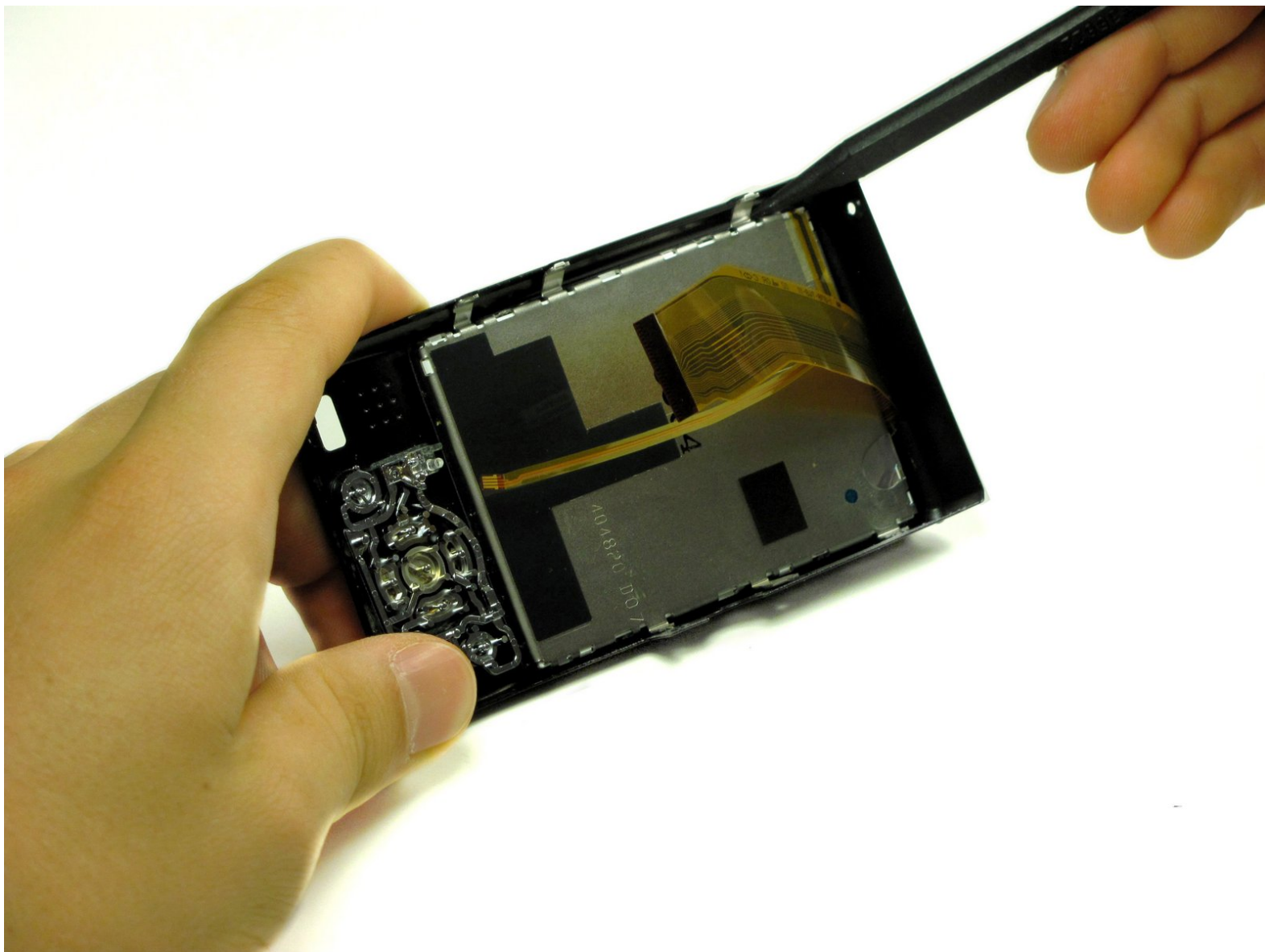




Panasonic Lumix DMC-ZS3 LCD Screen Replacement

Replace the LCD screen of your Panasonic Lumix DMC ZS3 camera.

Written By: Juan Pablo Quinonez Weston



INTRODUCTION

Use this guide to replace the LCD screen which is housed in the camera's back cover.

TOOLS:

- [Phillips #00 Screwdriver](#) (1)
 - [Spudger](#) (1)
-

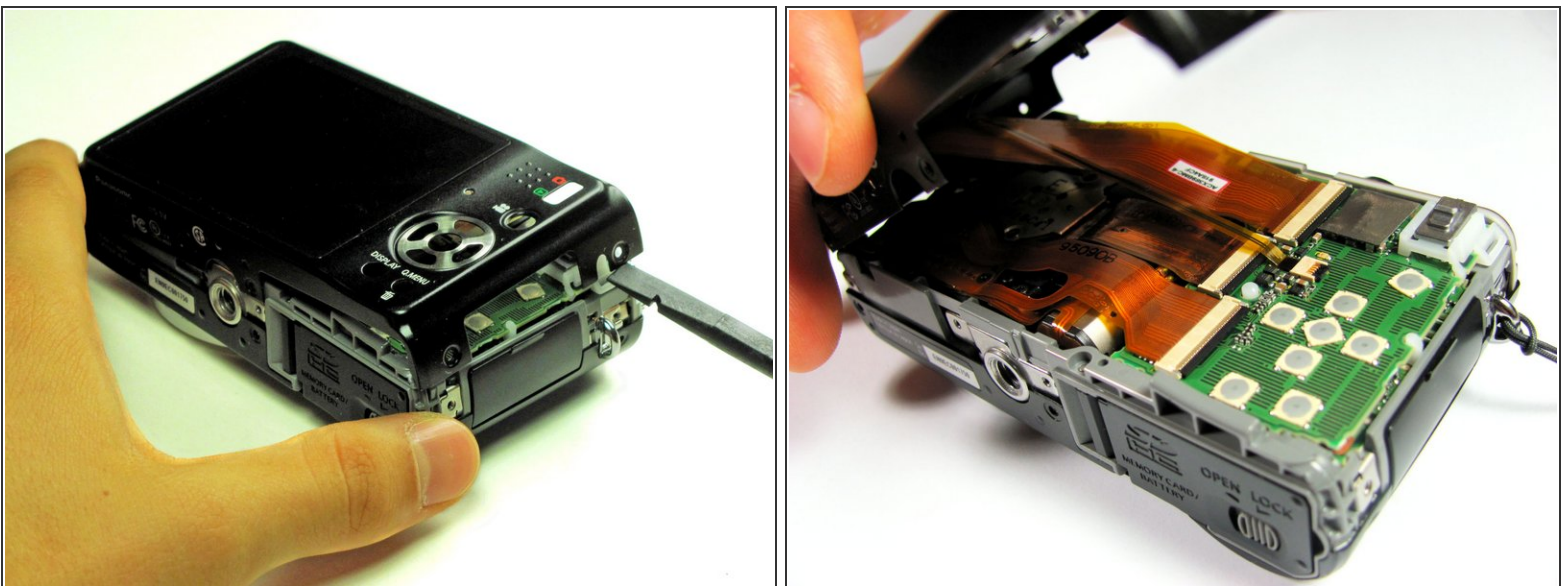
Step 1 — Back Cover



- Remove the following eleven screws securing the covers to the ZS3
 - Eleven 3 mm Phillips screws

⚠ Using too much pressure when removing the screws may strip the screws and complicate screw removal at a later time.

Step 2




- Use the flat end of a spudger to pry apart the back cover from the rest of the unit as shown.

⚠ Be sure to carefully and slowly lift the back cover. Forcefully lifting the back cover and fully separating it at this point may ruin internal connections.

Step 3



- Using your fingernail or a spudger, flip up the ZIF locking flap on the two LCD ribbon cable sockets that connect the back cover to the rest of the unit.

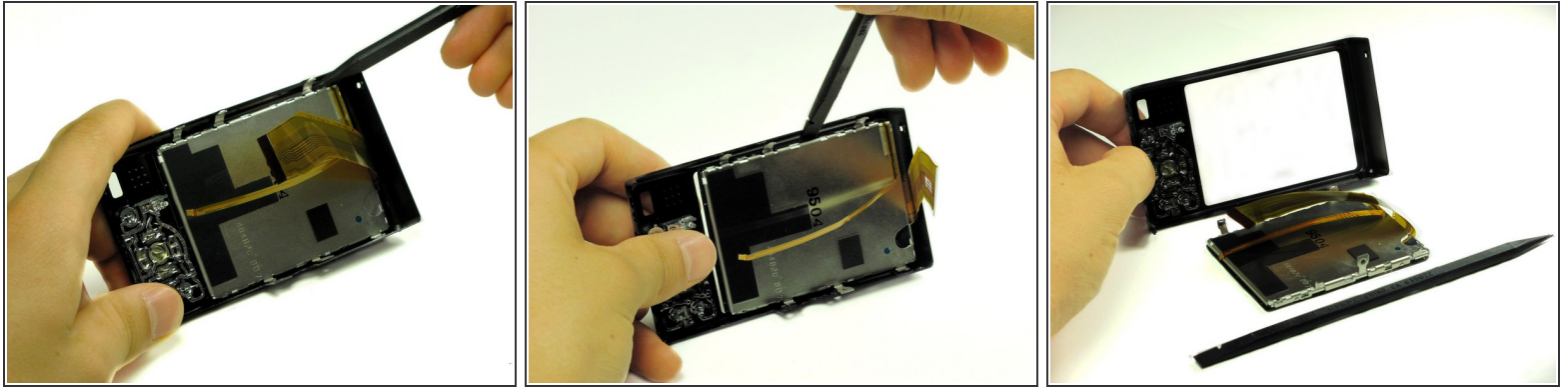
 Be sure you are opening the locking tab, not pulling against the socket mounted to the board.

Step 4



- Remove the two LCD board ribbon cables out of their sockets.

Step 5 — LCD Screen



- Take the back panel and use the flat end of the spudger to pry the LCD screen from the back cover.
- ⓘ It may be necessary to wiggle the spudger a little to loosen the adhesive that holds the LCD screen to the back cover.
- ⚠ Be sure not to use excessive force in order to avoid damaging the components.

To reassemble your device, follow these instructions in reverse order.