



RCA Lyra X2400 Battery Replacement

Replace the battery in your LYRA X2400.

Written By: Ted Cercos



INTRODUCTION

This guide shows you how to install your new LYRA X2400 battery.



TOOLS:

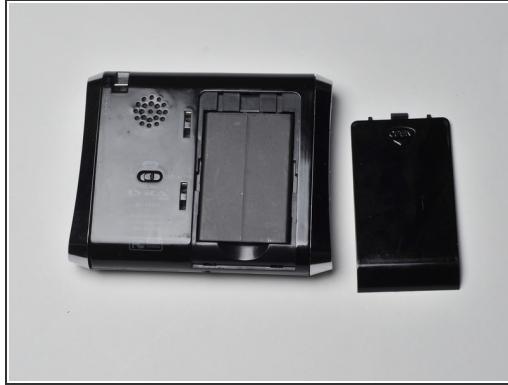
- [Phillips #00 Screwdriver](#) (1)



PARTS:

- [LYRA X2400 Battery](#) (1)
-

Step 1 — Battery



- Using slight pressure with your finger on the word "OPEN", slide the battery plate down.
- Remove the battery plate.
- Place your finger at the bottom of the battery.
- Lift up on the battery until it pops out from the LYRA X2400.

To reassemble your device, follow these instructions in reverse order.

This document was last generated on 2017-06-22 09:10:30 PM.