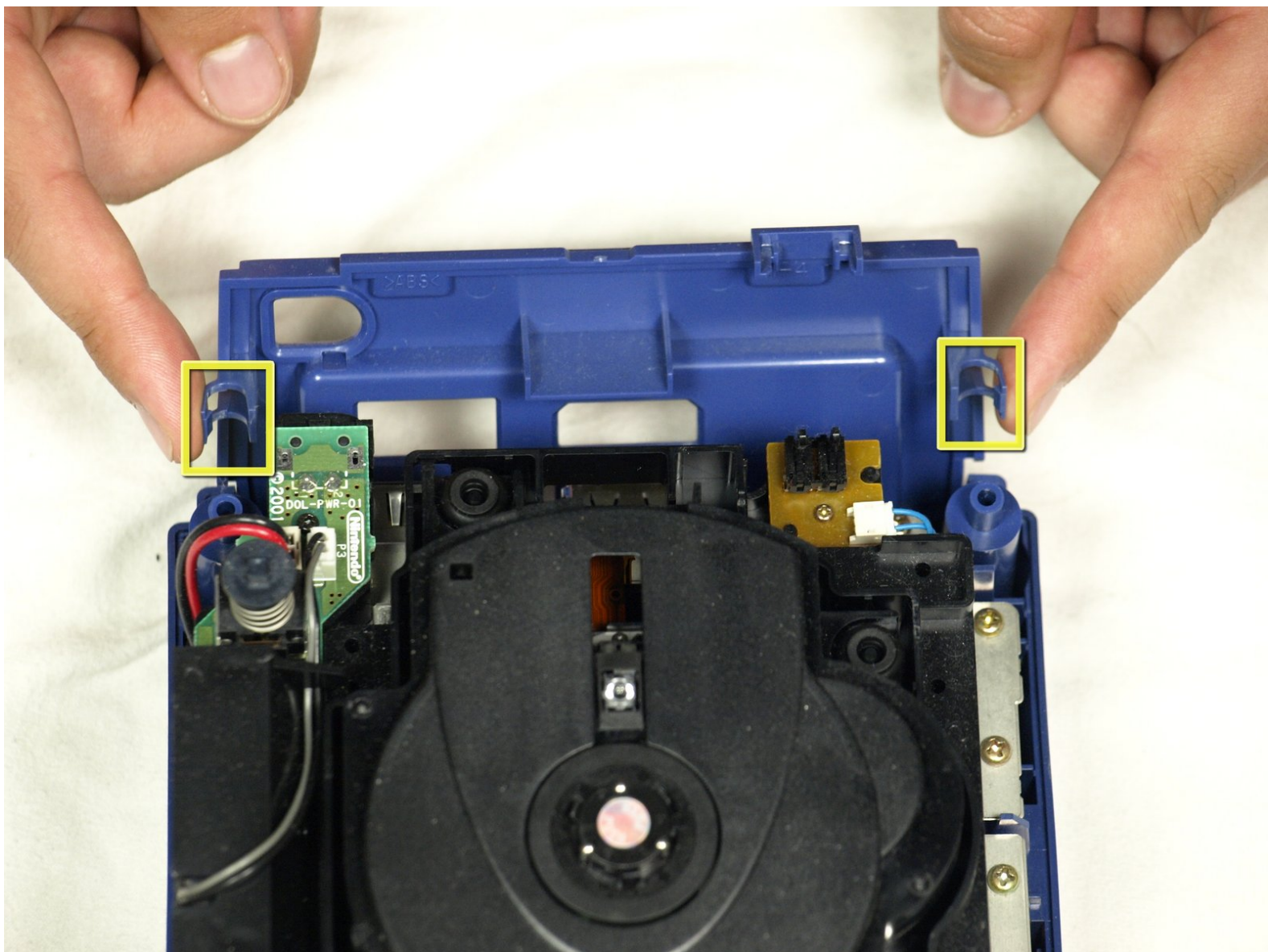




Nintendo GameCube Front and Back Panel Replacement

Written By: dcarlin



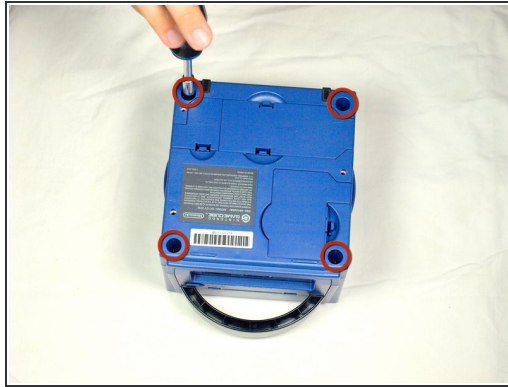
INTRODUCTION

Removing these panels allows further access to the GameCube's components.

TOOLS:

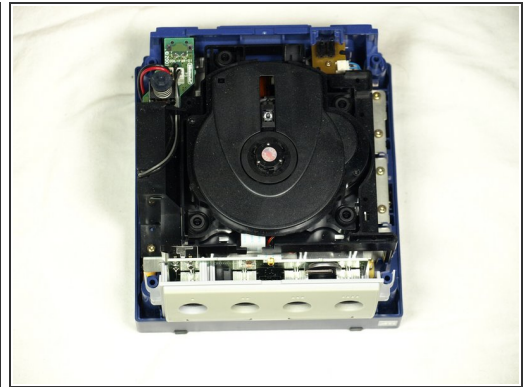
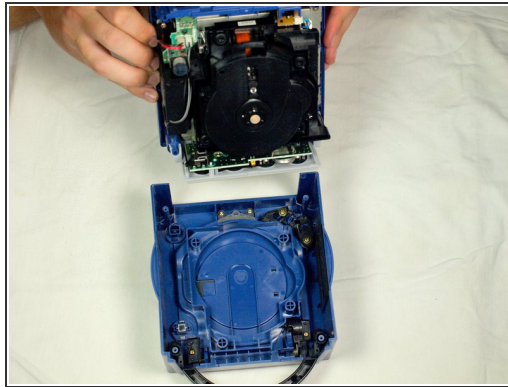
- [Gamebit 4.5mm](#) (1)
 - [Phillips #2 Screwdriver](#) (1)
-

Step 1 — Top Case



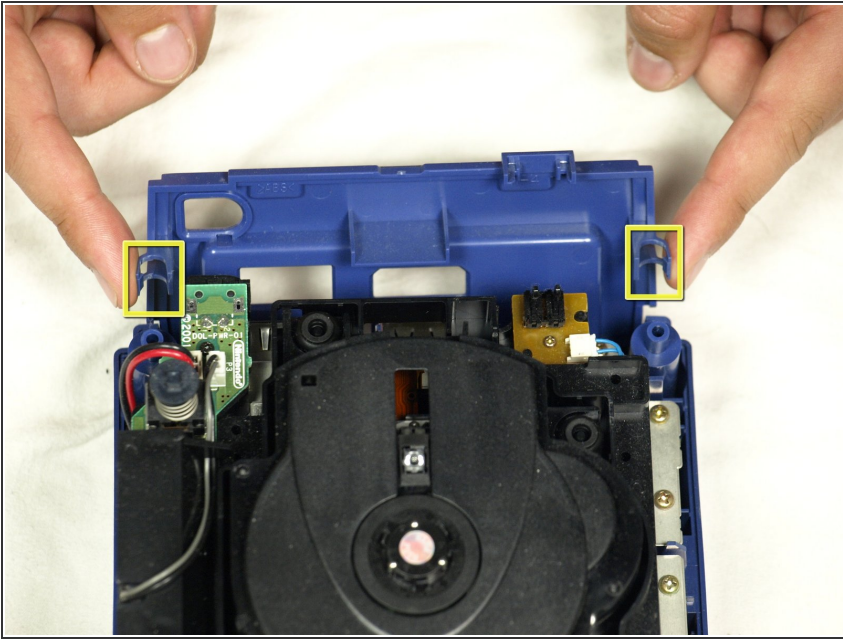
- Turn over the Gamecube so that the bottom side is facing up.
- Locate the four screws (circled in red) on each corner of the device. Then, use a 4.5 mm Gamebit screwdriver to remove all four screws.

Step 2



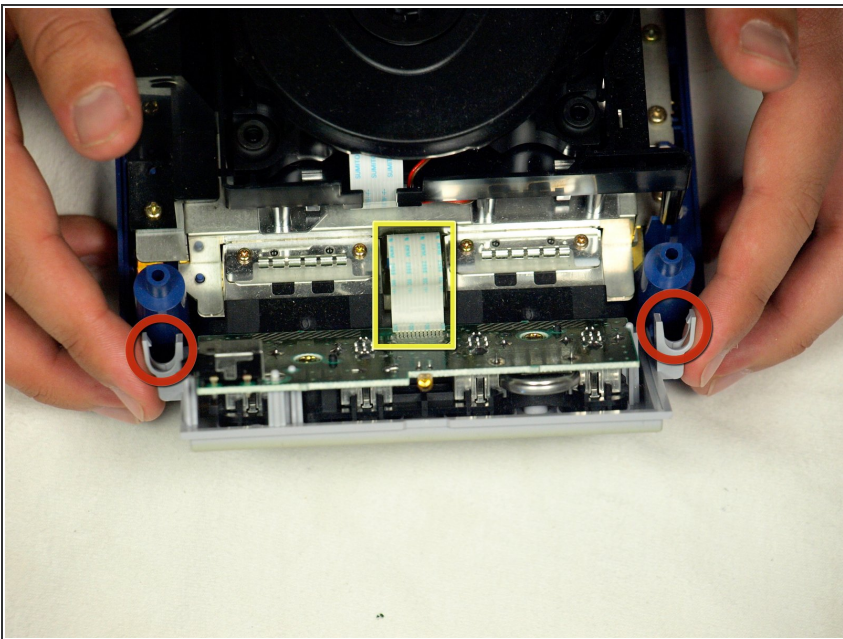
- With the bottom side of the GameCube facing upward and the screws removed, carefully pull the outer shell of the unit away from the top half. Then place the inside of the unit facing up.

Step 3 — Front and Back Panel



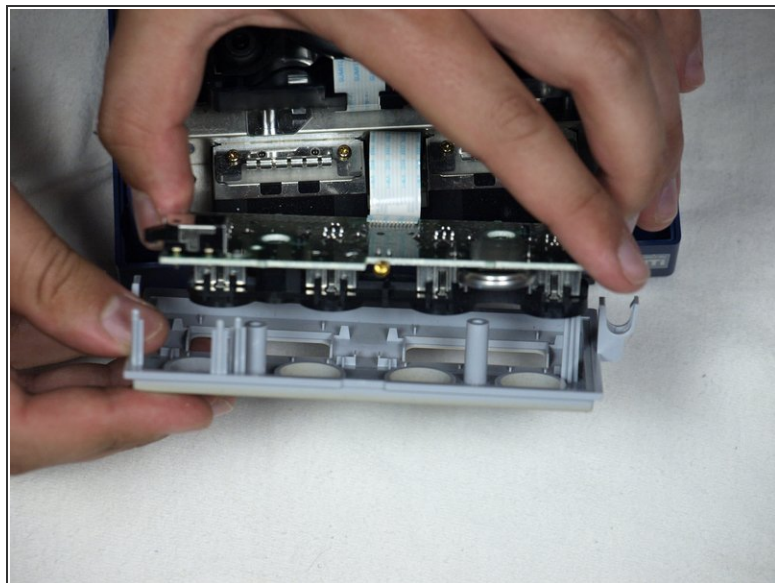
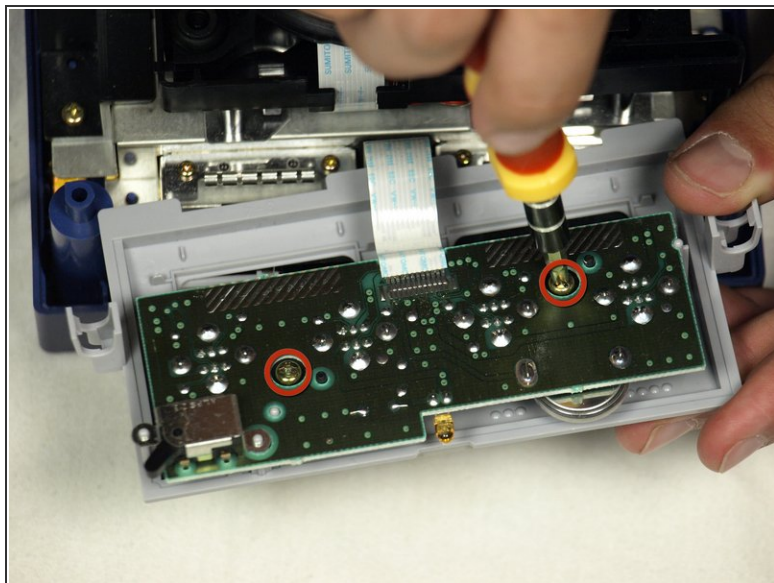
- Gently press down on the clips located on either side of the the back panel, as shown, and carefully remove it from the main part of the device.

Step 4



- With the back panel removed, carefully unclip the controller ports at the front of the unit.
- ⚠ A ribbon cable (outlined in yellow) is still attached to the unit. **Do not disconnect this cable.**
- ⓘ Controller ports are where the controllers plug into the game console, and are a half circular shape.

Step 5



- Use a Phillips screwdriver to remove the two screws (circled in red) that are located on the back of the control port.
- Carefully separate the gray outer casing of the control port and the circuit board.

To reassemble your device, follow these instructions in reverse order.