



Removing Philips DC320 37 Bottom Panel

This guide covers the removal of the bottom panel.

Written By: Greg Lane



INTRODUCTION

Use this guide to open the dock and install other components.

TOOLS:

- [Phillips #2 Screwdriver](#) (1)
 - [Spudger](#) (1)
-

Step 1 — Bottom Panel



- Pry off the four white feet with the pointed end of the spudger

Step 2



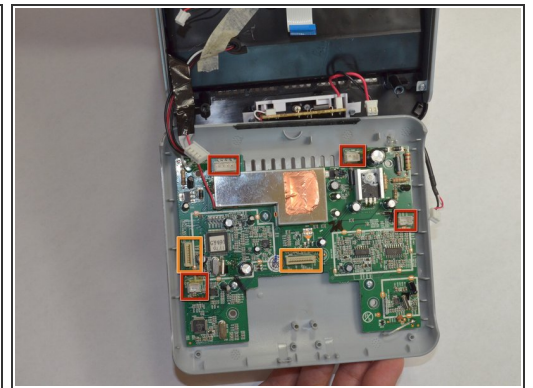
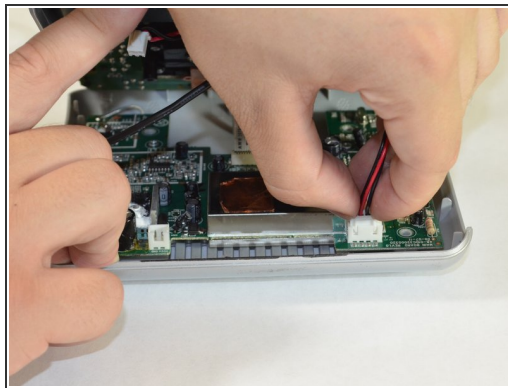
- Unscrew the four 15.5 mm Phillips #2 screws that hold the bottom panel to the dock.

Step 3



- Use the flat end of the spudger to pry the lid off from the two connectors holding it to the body of the dock.
- ⚠ The connectors on the panel are fragile and may break.

Step 4



- Carefully pull up and out the four electrical connectors and the two ribbon connectors connecting the bottom panel and the dock.
 - Electrical Connectors
 - Ribbon Connectors

⚠ The cables do not have a lot of slack in them. Be careful not to break the connectors.

⚠ One wire is soldered onto the bottom panel. Be careful not to break this bond.

To reassemble your device, follow these instructions in reverse order.