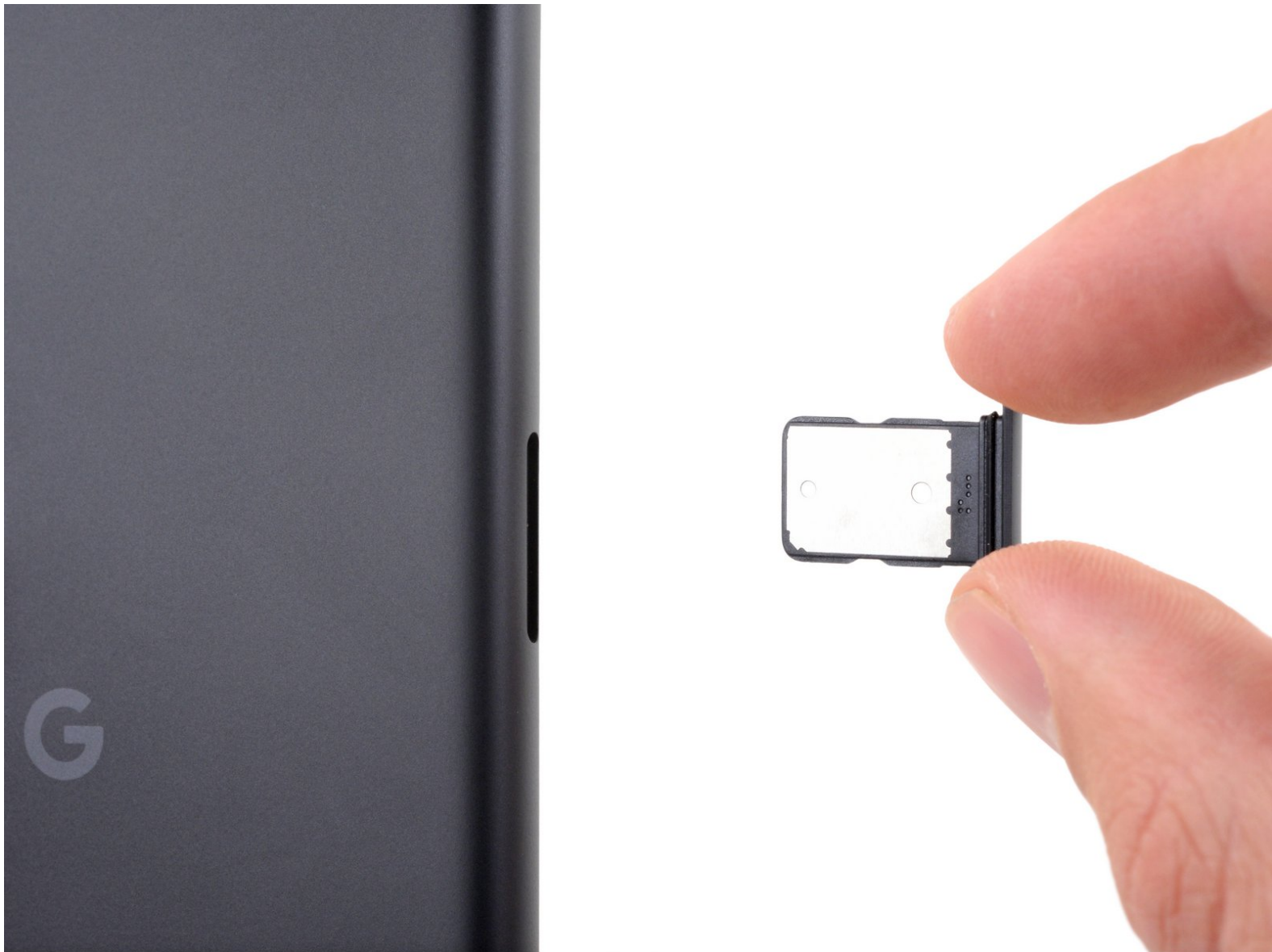




# Google Pixel 4a 5G SIM card tray Replacement

How to replace the SIM card tray on a Google Pixel 4a 5G.

Written By: Sam Omiotek



---

## INTRODUCTION

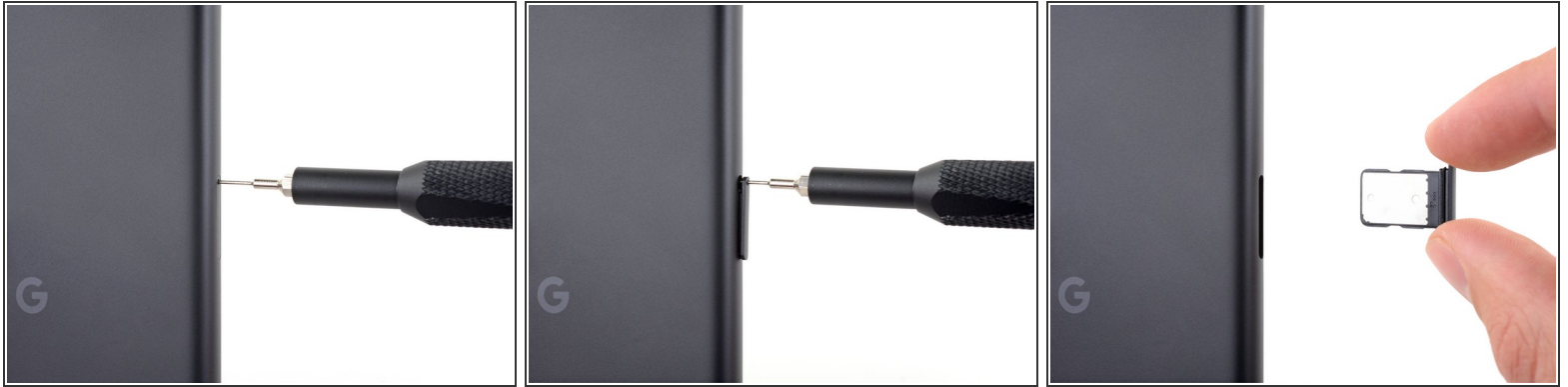
Follow this guide to replace the SIM card tray on your Google Pixel 4a 5G.

---

### TOOLS:

- [SIM Card Eject Tool](#) (1)
-

## Step 1 — Eject the SIM card tray



- Insert a SIM eject tool, bit, or straightened paper clip into the SIM tray hole.
- Press directly into the hole to eject the SIM card tray.
- Remove the SIM card tray.

**To reassemble your device, follow the above steps in reverse order.**

Take your e-waste to an [R2 or e-Stewards certified recycler](#).

Repair didn't go as planned? Try some [basic troubleshooting](#), or ask our [Answers community](#) for help.