



ATT CL82315 Battery Replacement

How to replace the battery in this landline phone

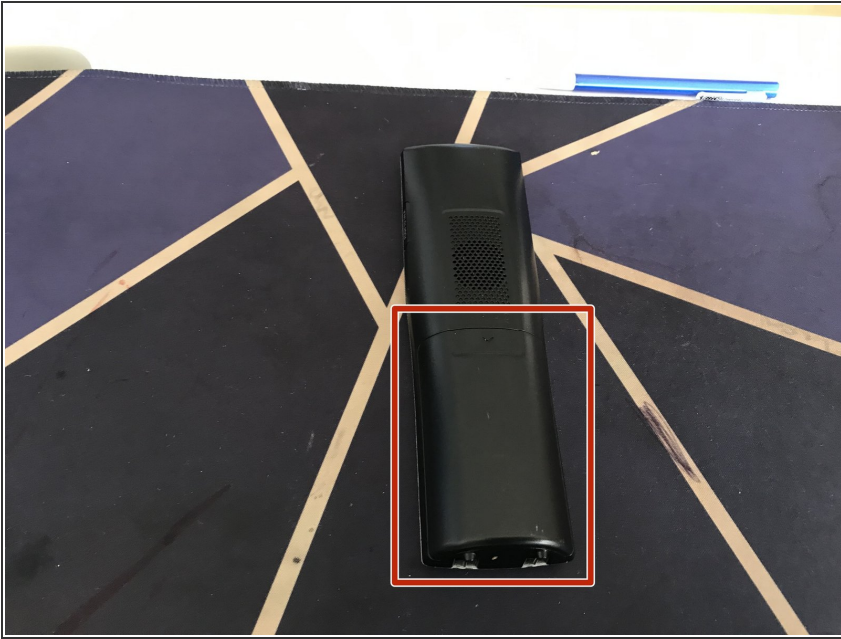
Written By: Javen



INTRODUCTION

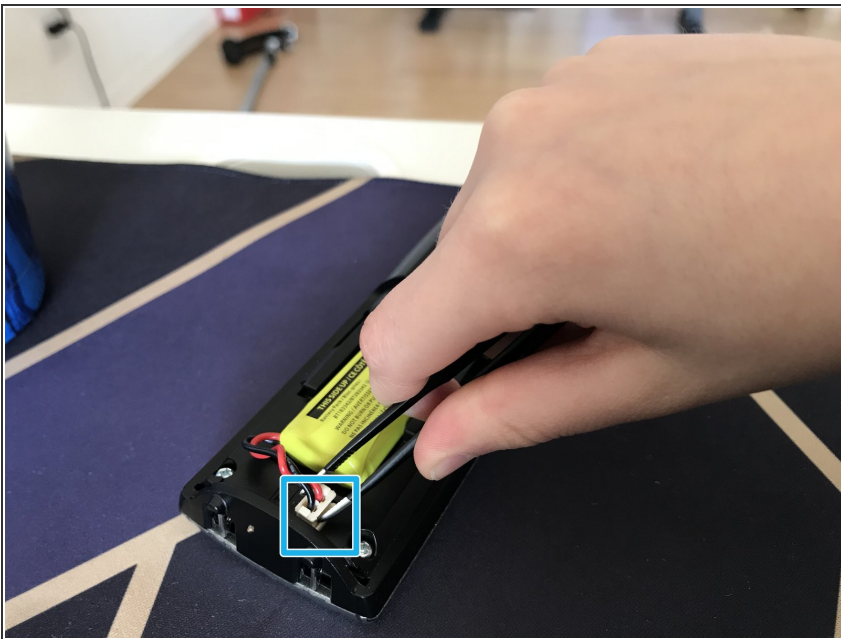
Here is how to replace the battery in a ATT CL82315 Land Line phone.

Step 1 — Remove the back cover



- Remove the back cover by sliding it off.

Step 2



- Use a pair of blunt tweezers or your hands to remove the battery connector from its socket.
- ⓘ Please note that the cable is really in the socket and will require a lot of force to remove. Be careful to not rip the wires.

To reassemble your phone, follow these instructions in reverse order.