



Daewoo KOC-9U0T Lightbulb Replacement

This guide will show you how to replace a microwave lightbulb on your own in the Daewoo KOC-9U0T model.

Written By: Mohammed Reza Doctor



INTRODUCTION

Most microwaves are equipped with an internal light that turns on when the door is opened or when the microwave is operational. However, as time progresses the lightbulb may stop working. This guide will show you how to replace the lightbulb in your Daewoo KOC-9U0T microwave on your own. It is not a long process and is easy to do.

TOOLS:

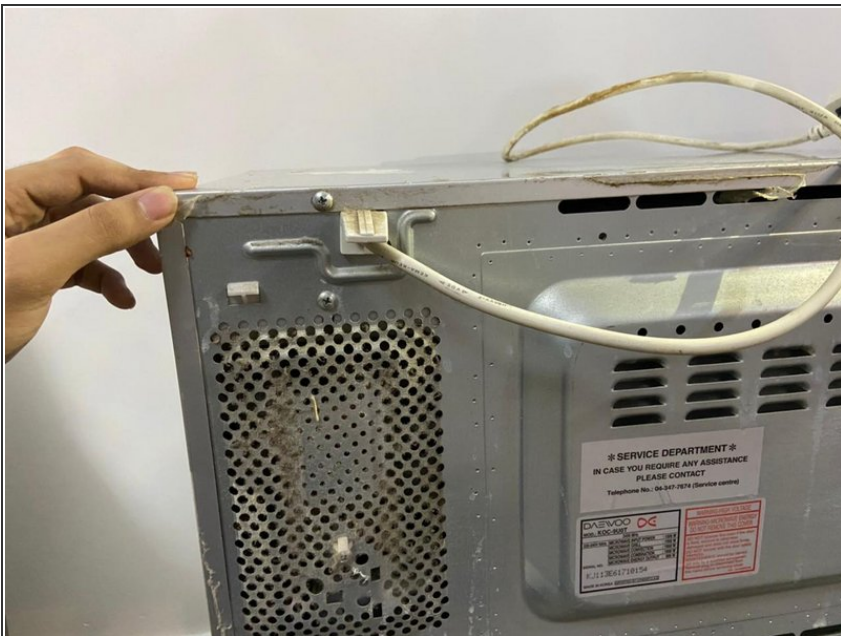
- [Phillips #0 Screwdriver](#) (1)
-

Step 1 — Lightbulb



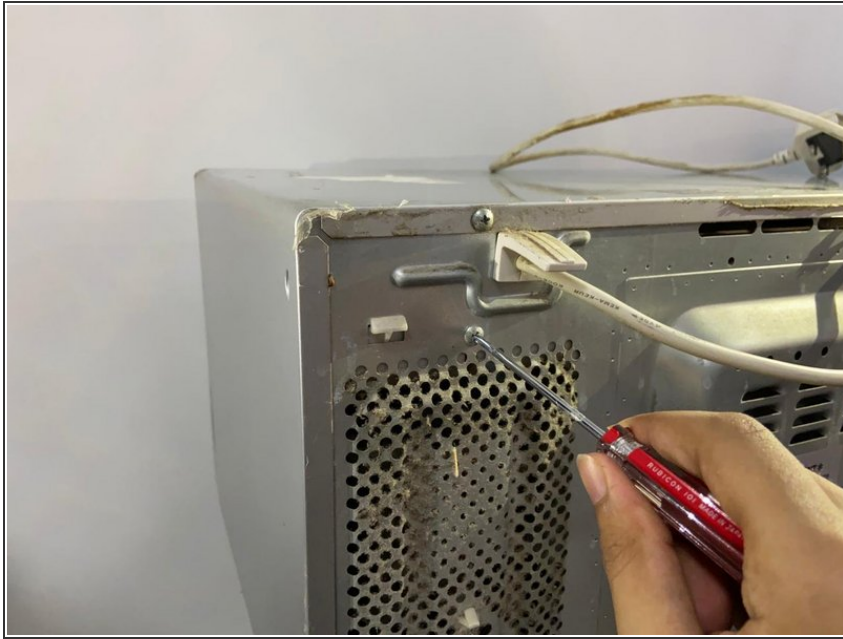
- ⚠️ Never attempt to change the bulb in a microwave while the microwave is still plugged in or while power is being supplied.
- Unplug the microwave from any wall outlets or power sources.

Step 2



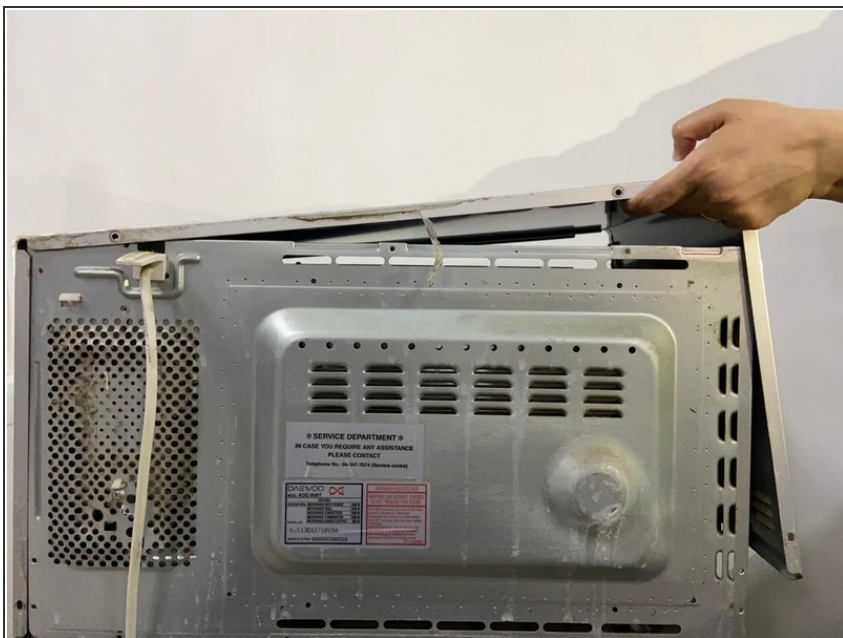
- Examine your microwave to find the vent on the back of the microwave.
- ⓘ On other microwaves, there will be a vent located either in the front, side or bottom of the machine, depending on make, model, and mounting.

Step 3



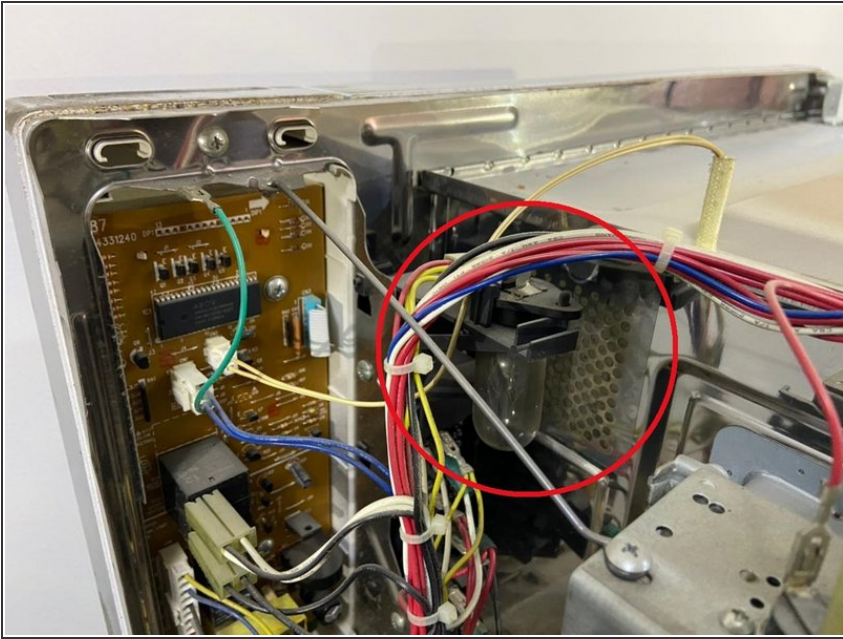
- Remove the four 20 x 3" screws on the rear side of the microwave using a Phillips #0 screwdriver.

Step 4



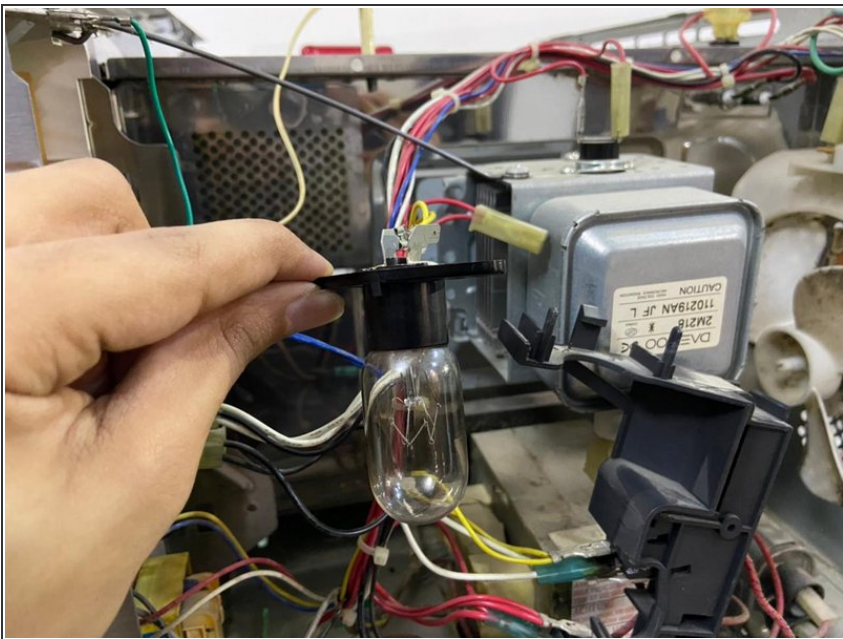
- Lift off the service panel of the microwave and set it aside.
- ⓘ Do not attempt to change the light bulb from within the microwave's interior; always remove the vent panel and change the light bulb from within.

Step 5



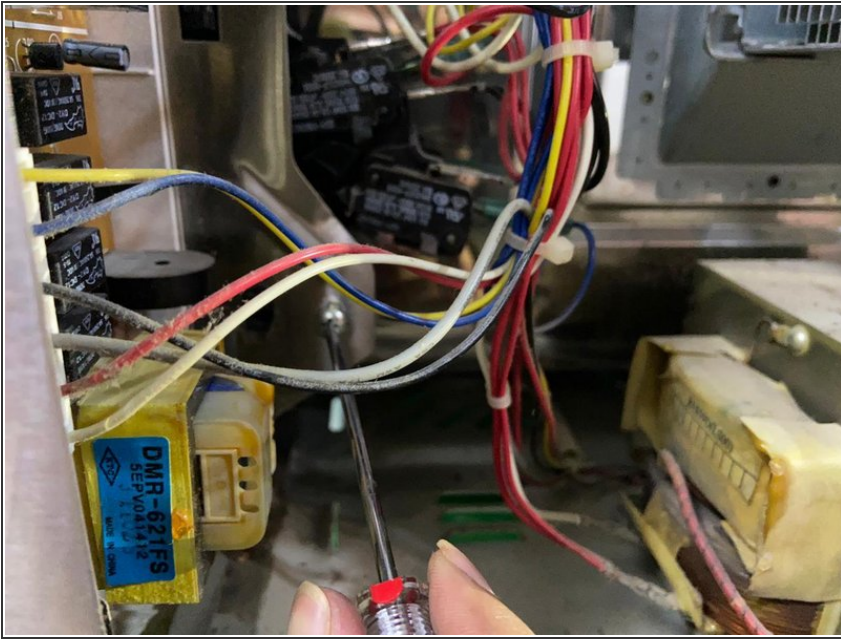
- Locate the box that the halogen light is kept in.
- Search for the light box that contains the bulb.

Step 6



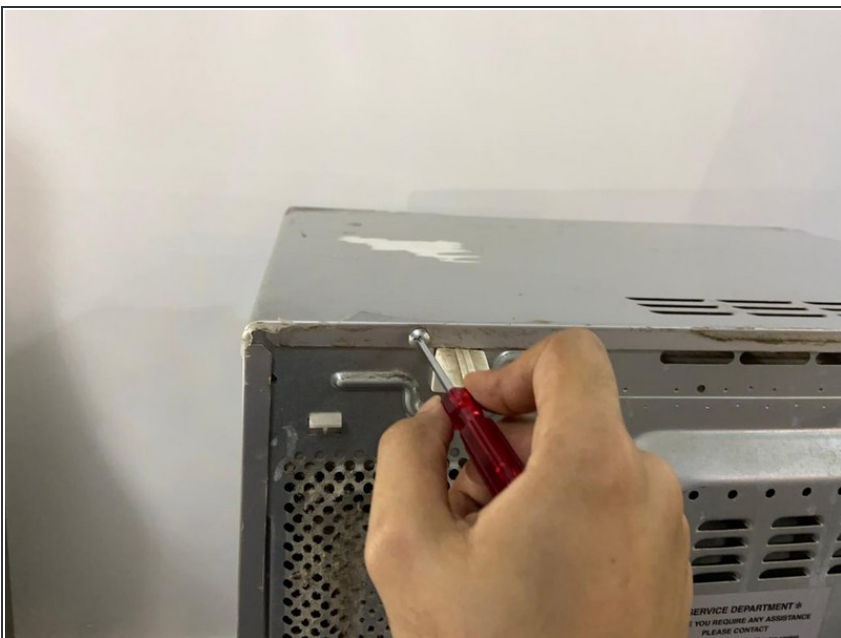
- Remove the screws that hold the lightbox in place with a Phillips #0 screwdriver.

Step 7



- Unscrew and remove the light bulb from the socket on the lightbox.
- Replace it with a new light bulb.
- Screw the lightbox back into place on the frame of the microwave.

Step 8



- Replace the service panel and tighten down the screws.
- ⓘ Make sure you tighten the screws hard enough because if it the cover of the microwave is loose, then the radiations can harm your body.

Step 9



- Plug the microwave back in or reset the breaker.
- ⓘ You're ready to see if your microwave has been repaired.

Step 10



- Open the microwave's door to test the new light bulb: If you've replaced the bulb correctly and the new bulb is working properly, then the light should go back on when you reopen the microwave's door!

To reassemble your device, follow these instructions in reverse order.