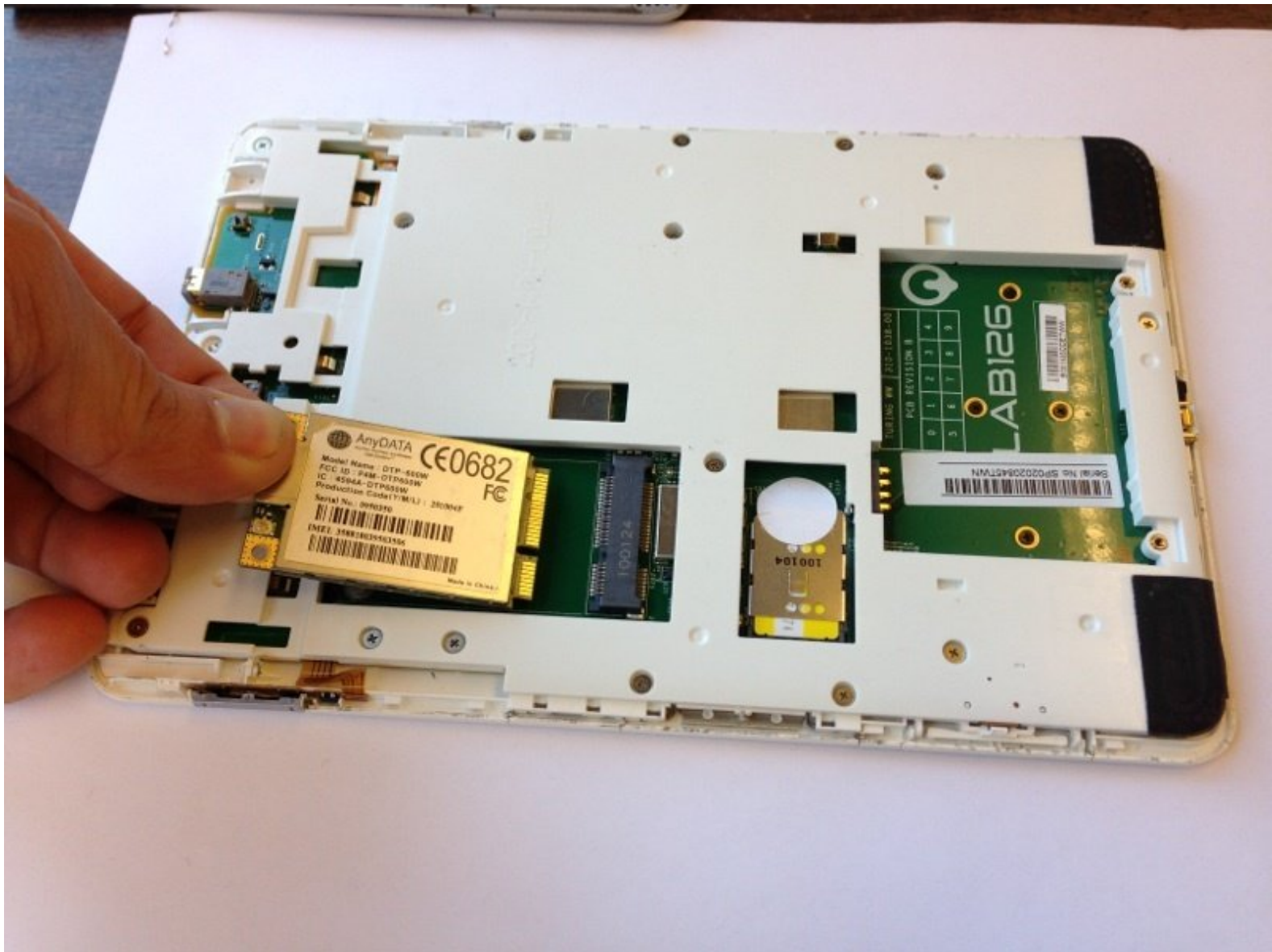




Kindle 2 Wireless Card Replacement

Replace the wireless card on your Kindle 2.

Written By: Dayna Scott



INTRODUCTION

Use this guide to replace the wireless card in your Kindle 2.



TOOLS:

- [Phillips #00 Screwdriver](#) (1)
- [iFixit Opening Tools](#) (1)



PARTS:

- [Kindle 2 Replacement Wireless Card](#) (1)
-

Step 1 — Battery



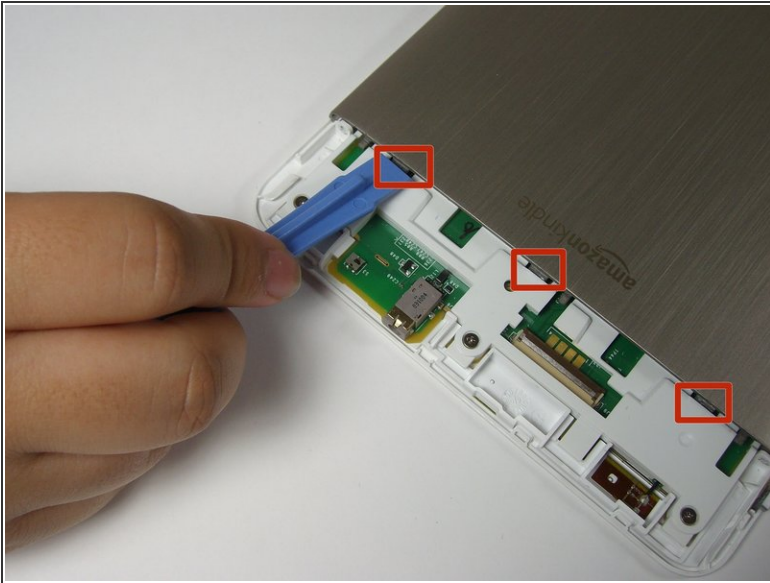
- Lay the Kindle face down on a soft cloth to protect its screen.
 - Wedge the plastic opening tool in the small opening between the grey plastic and the metal casing.
 - Move the plastic opening tool across the opening while pressing down to separate the grey plastic from the metal casing.
 - Slide the gray plastic top piece away from the Kindle's metal casing.
- i** Once the gray plastic top piece is detached from the metal back cover, remove it.

Step 2



- Use a Phillips #00 screwdriver to remove the two 4mm screws from the metal casing .

Step 3



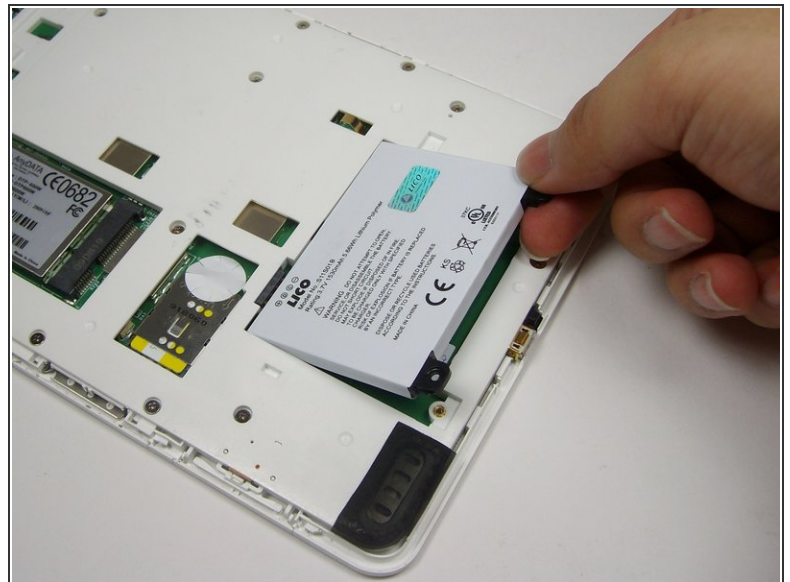
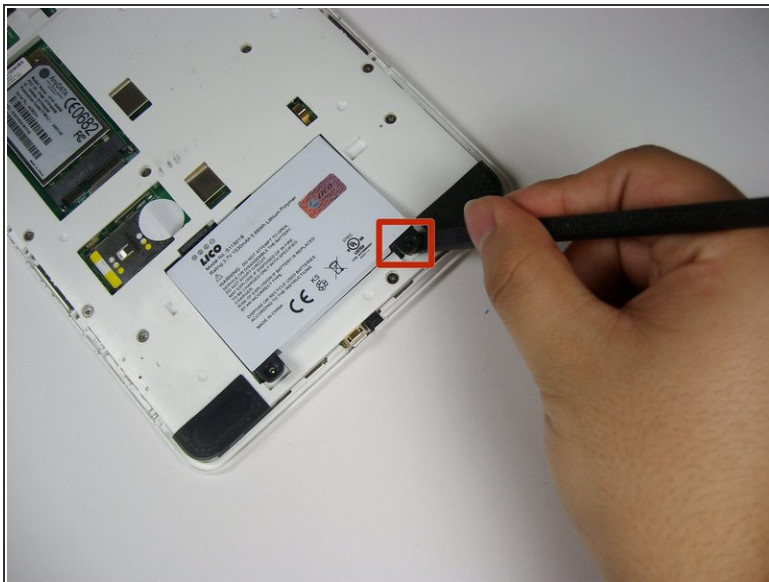
- Locate the three clips that hold the metal case in place. Use the plastic opening tool to push down and pry towards the metal casing to release each clip.
- Remove the metal casing.
- ☞ The volume control button rests in a slot on the side of the Kindle. When the metal casing is removed, the volume control button may fall out. When reassembling, place the volume control button back into its slot.

Step 4



- For safety reasons, use a Phillips #00 screwdriver to remove the two 3mm screws that hold the battery in place.

Step 5



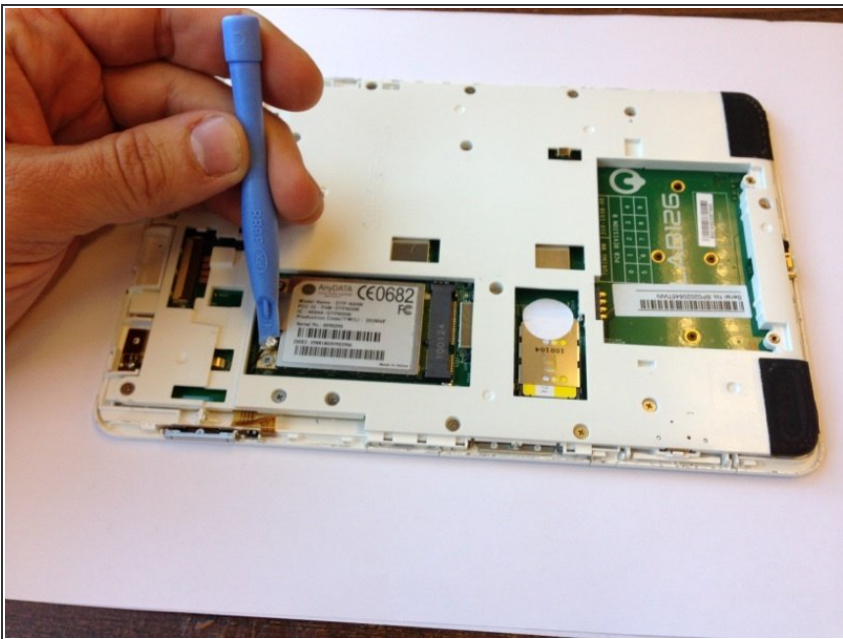
- Pry upward under the black tab with the spudger to dislodge the battery.
- Use your fingers to lift the battery out of the device.

Step 6 — Wireless Card



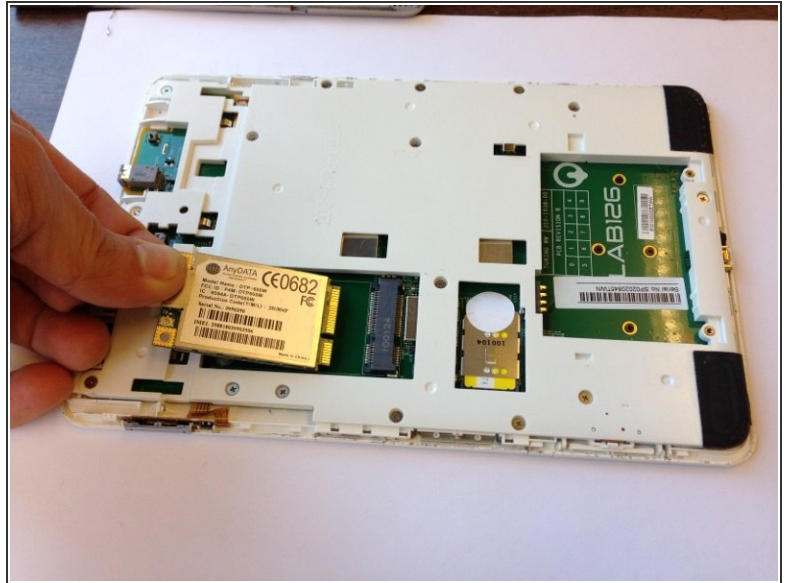
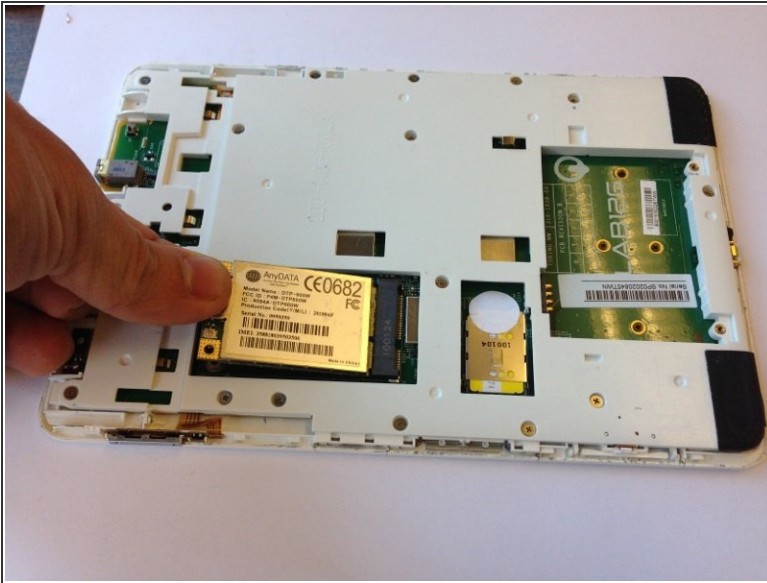
- ⓘ Rotate the Kindle 180 degrees. Locate the wireless card with the AnyData logo on the top left and the FCC symbol on the right.
- Use a Phillips #00 screwdriver to remove the two 2mm screws from the wireless card.

Step 7



- Use the plastic opening tool to wedge underneath the connection and gently pop off the wire cap.

Step 8



- Use your fingers to lift the left end of the wireless card.
- Pull the card out of the slot.

To reassemble your device, follow these instructions in reverse order.