



# Toshiba Satellite A210 RAM Replacement

This guide will show you how to remove the RAM from a Toshiba Satellite A210.

Written By: Devin



---

## INTRODUCTION

In this guide you will learn how to remove the RAM. In the case of a broken or unresponsive RAM a replacement may be required. Before beginning this guide you should have all required tools that are listed.

---

### TOOLS:

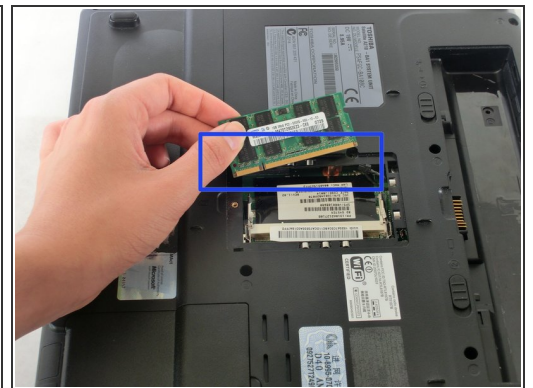
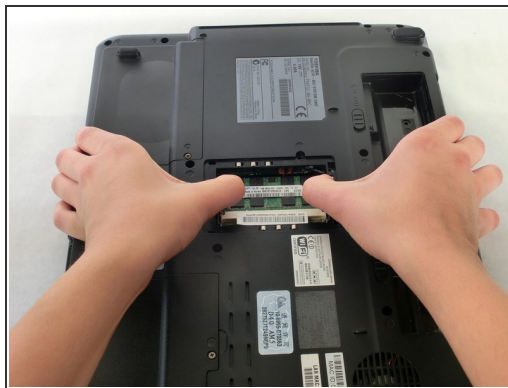
- [Phillips #1 Screwdriver](#) (1)

## Step 1 — RAM



- Remove the screw holding the RAM cover with a PH1 screwdriver.
- Remove the RAM cover.

## Step 2



- Push outwards on the metal tabs to release the RAM.
- Remove the RAM. Some force may be needed.

**⚠** Be careful not to touch the gold pins on the RAM chips as there may be a build-up of static electricity. This can fry the parts of the chip that houses memory.

In order to reassemble your device, follow these instructions in reverse order.