



# Razer BlackWidow Chroma Wire Harness Replacement

Use this guide to replace the wire harness in the Razer BlackWidow Chroma keyboard.

Written By: Annika Grace Ford



---

## INTRODUCTION

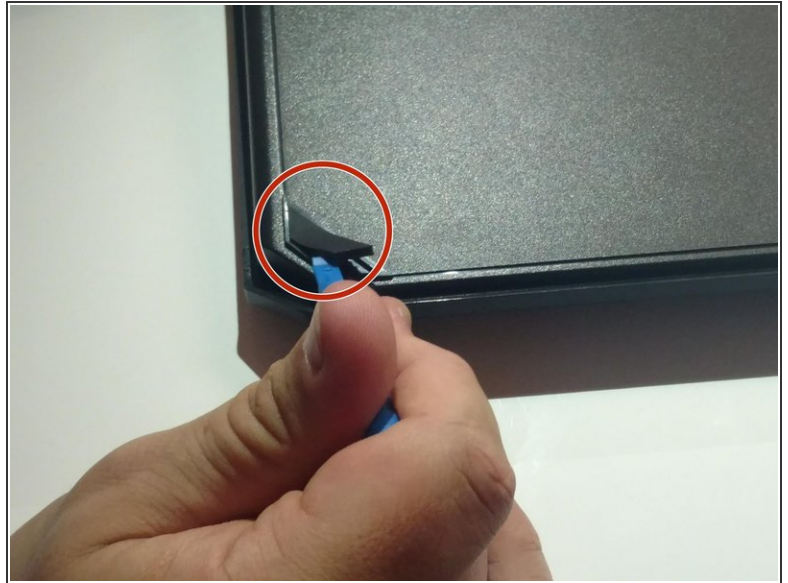
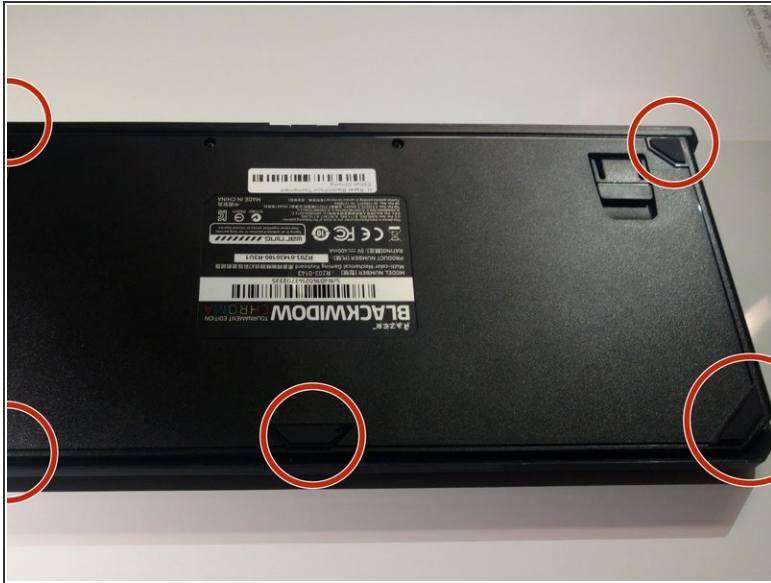
This guide will show you how to replace the wire harness in the Razer BlackWidow Chroma keyboard.

---

### TOOLS:

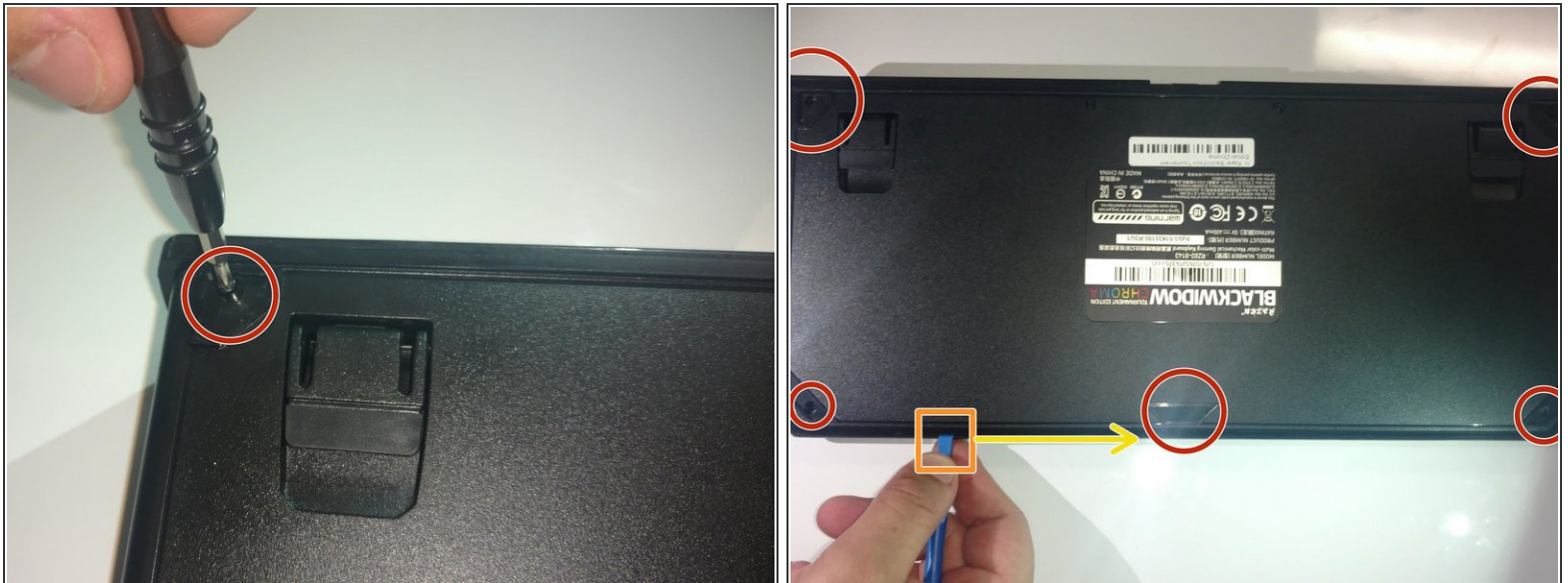
- [iFixit Opening Tools](#) (1)
  - [Phillips #1 Screwdriver](#) (1)
-

## Step 1 — Rubber Feet



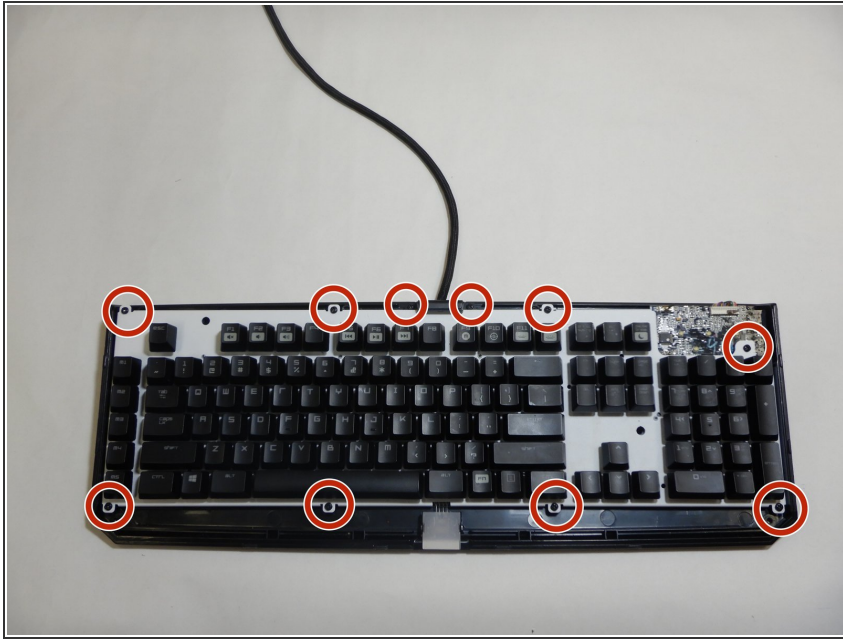
- Turn the keyboard over so that it is lying flat on its face.
- Use the iFixit opening tool to pry the rubber feet off the keyboard.

## Step 2 — Front Panel



- Use a Phillips #1 screwdriver to remove the six screws on the back of the keyboard.
- Use an opening tool as a wedge between the front and back panel to pry open the front panel.
- ⚠ If the front and back panel won't separate, **DO NOT** use excessive force. This may result in damaging the keyboard.
- Instead, slide the opening tool across the keyboard in between the front and back panel. Go around the edges of the keyboard until the panels disconnect.
- Flip the keyboard over so the keys are facing up.
- Grabbing the left and right lips of the front panel, lift both ends up, removing the front panel.

### Step 3 — Wire Harness



- Using a Philips #1 screwdriver, remove all ten screws found on the edges of the keyboard.
- ⓘ Two of the screws are found on either side of the main cable.

### Step 4



- Remove the wire harness.

To reassemble your device, follow these instructions in reverse order.