



Toshiba Portege M400 Battery Replacement

Use this repair guide to replace the battery in your Toshiba Portege M400 that may have been damaged or just completely dead.

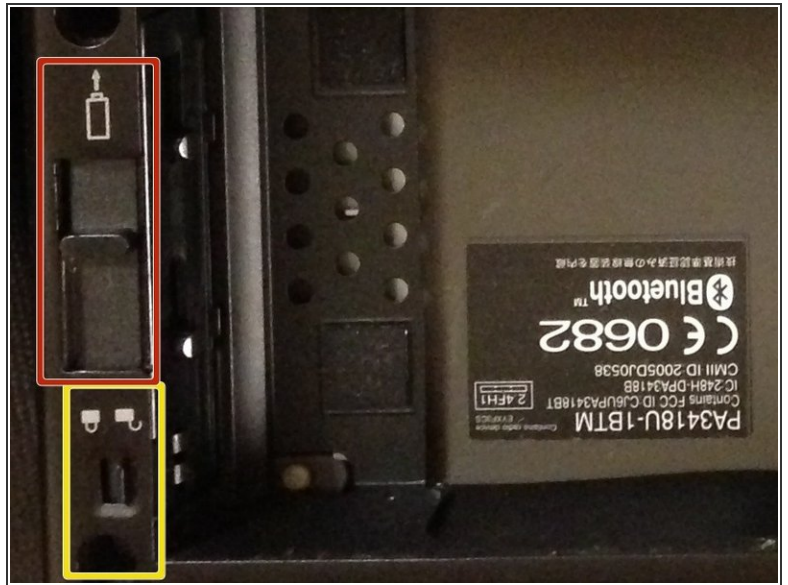
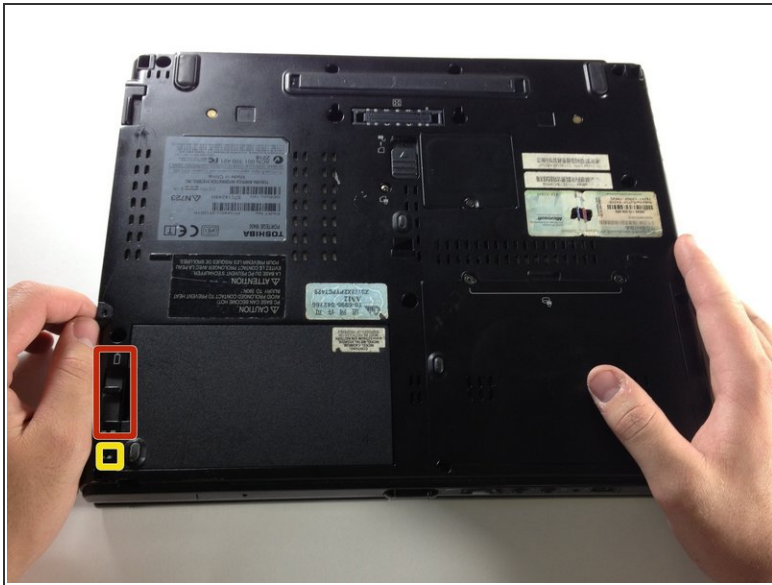
Written By: Varsha Roopreddy



INTRODUCTION

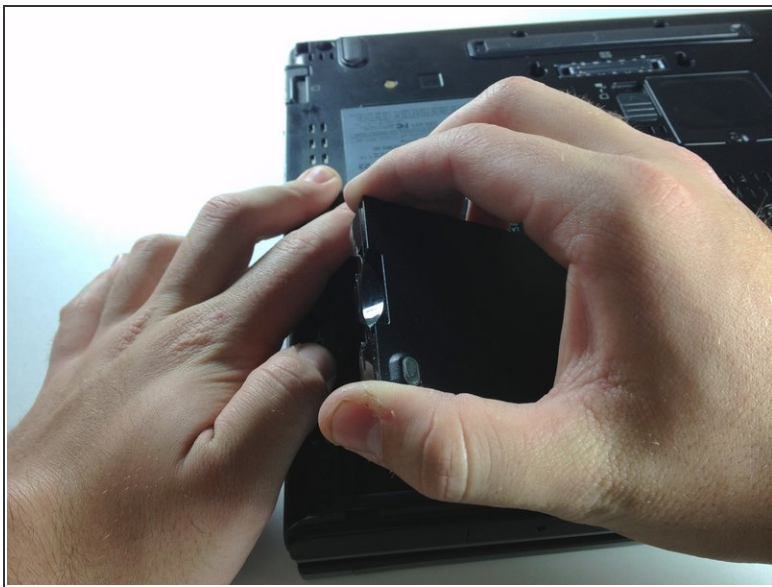
In this guide, you will learn how to replace a battery that doesn't charge properly or anymore. This guide will also teach you what the proper and necessary tools are for this repair.

Step 1 — Battery



- Make sure the battery lock switch is switched to the unlocked position.
- Slide the battery release switch to the up.

Step 2



- Using your hand, lift up the battery.
- ☑ The battery release switch must be held in place.

To reassemble your device, follow these instructions in reverse order.

This document was last generated on 2019-07-19 01:11:19 AM.