



# Toshiba Satellite A205-S4577 Hard Drive Replacement

This guide details how to remove and replace the hard drive.

Written By: Daniel Johnson



## INTRODUCTION

The purpose of this guide is to provide step-by-step instructions for replacing your hard drive. For this process you will need a Phillips #00 screwdriver.

---

### TOOLS:

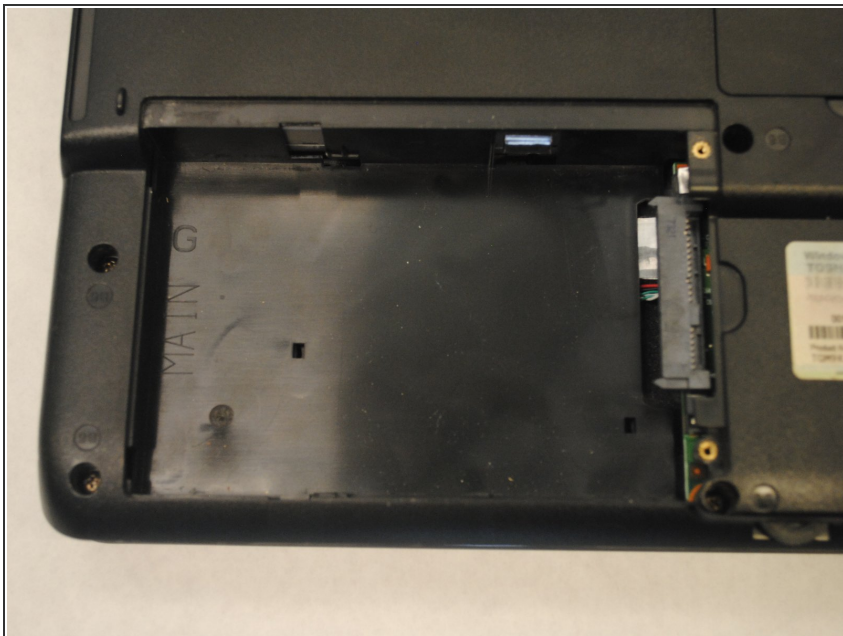
- [Phillips #00 Screwdriver](#) (1)
-

## Step 1 — Hard Drive



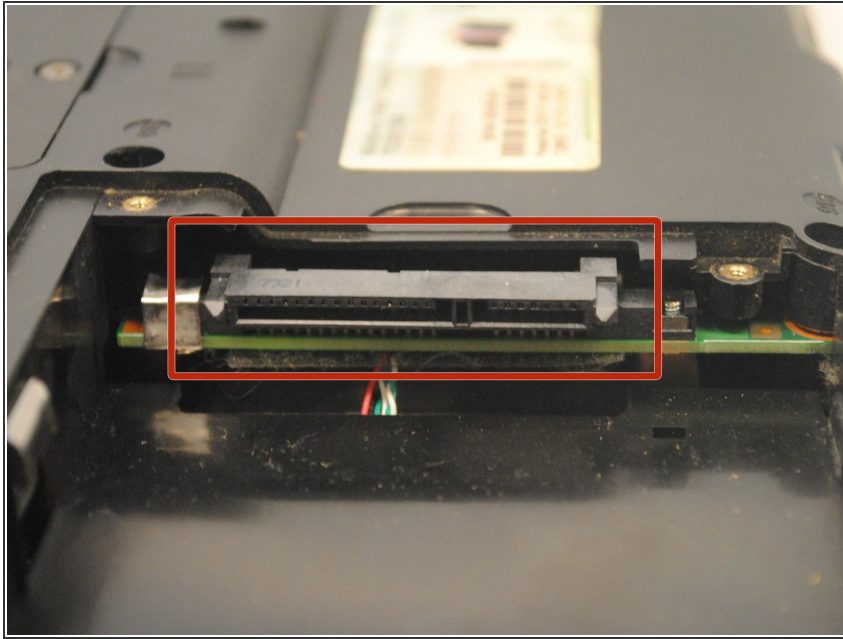
- Locate the hard drive cover on the bottom, left-hand corner of your laptop.
- Using a Phillips #00 screwdriver, remove both 4mm screws.

## Step 2



- Lift the cover to reveal the old hard drive.
- Carefully detach the hard drive from the SATA/Power connector.

### Step 3



- ✦ After removing the old hard drive, place the new hard drive into the bay, and firmly reattach it to the SATA/Power connector.

To reassemble your device, follow these instructions in reverse order.

This document was last generated on 2018-11-25 03:29:37 AM.