



MasterLock 1500EDBX Teardown

Exploring the new electronic lock from MasterLock.

Written By: Josh Thomas



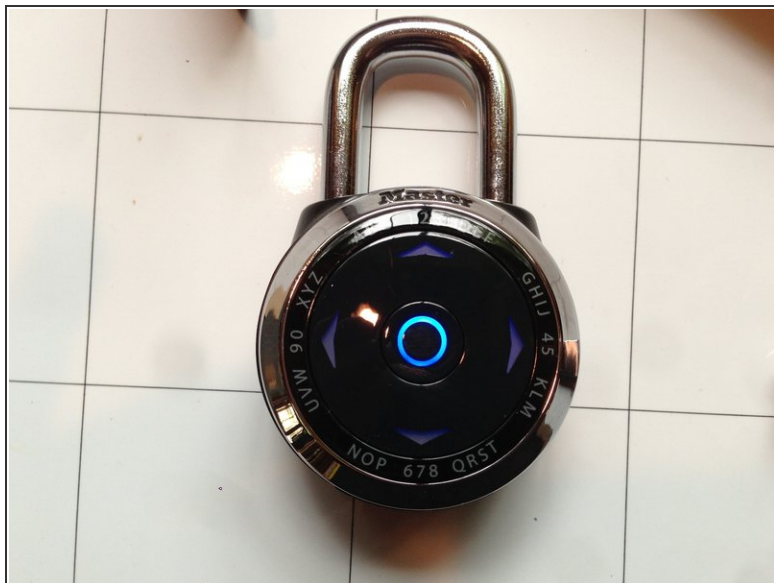
INTRODUCTION

Just a good view of the internals, for those that love MSP430 chips

TOOLS:

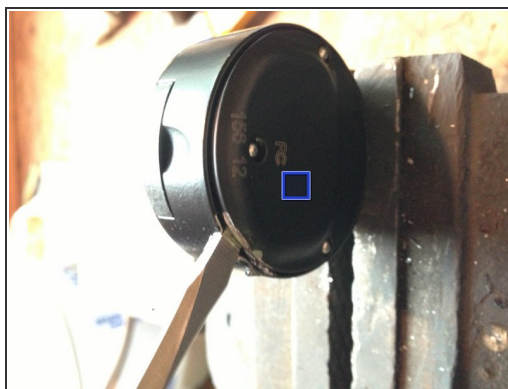
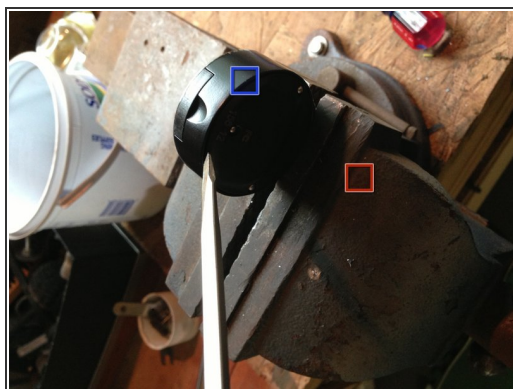
- [Spudger](#) (1)
 - [Hammer](#) (1)
-

Step 1 — MasterLock 1500EDBX Teardown



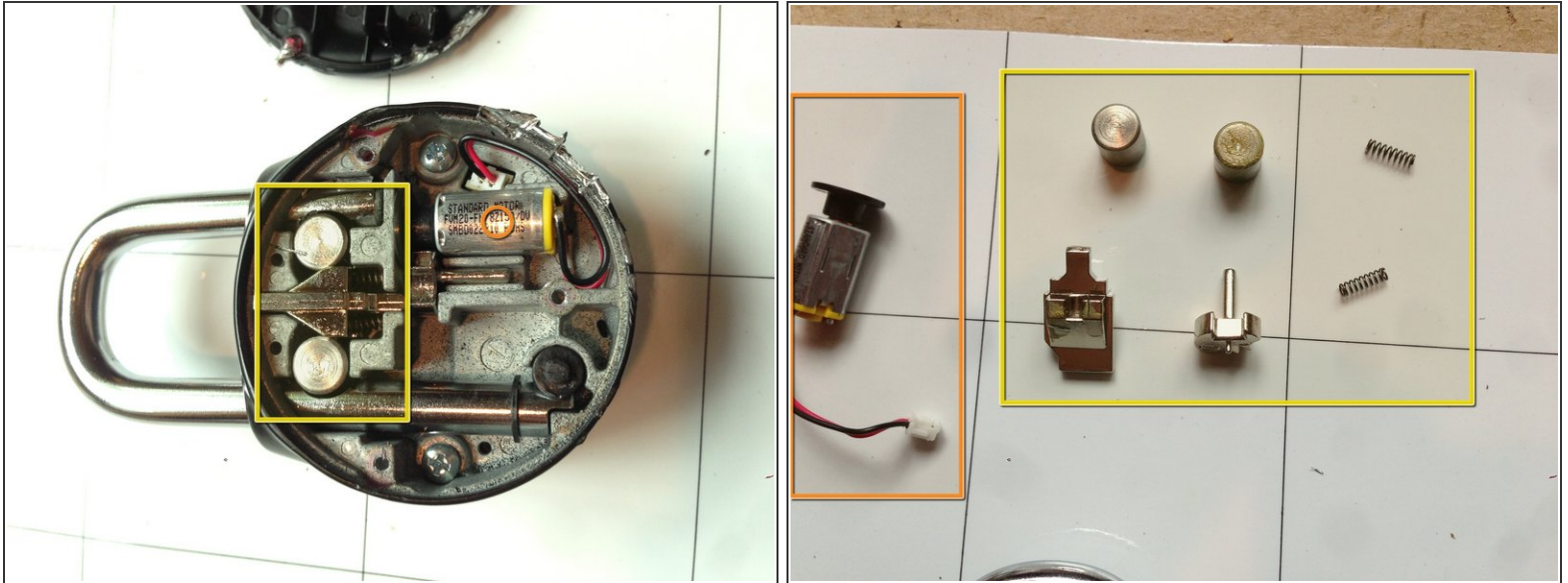
- A new lock, now with more buttons and less spinning!

Step 2



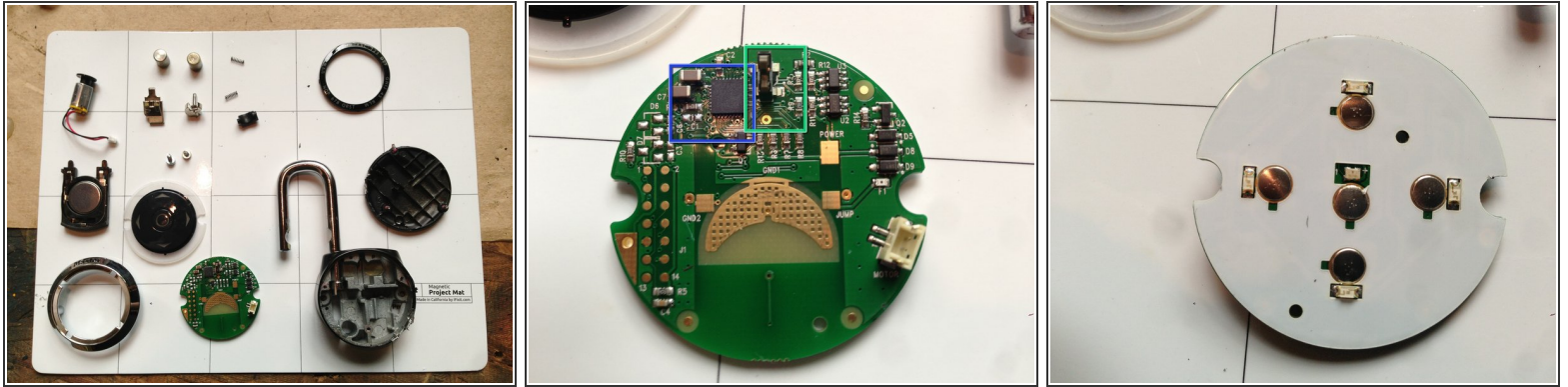
- Prepare lock for spuding
- Insert spudger and tap with hammer
- Gently pry until the lock opens

Step 3



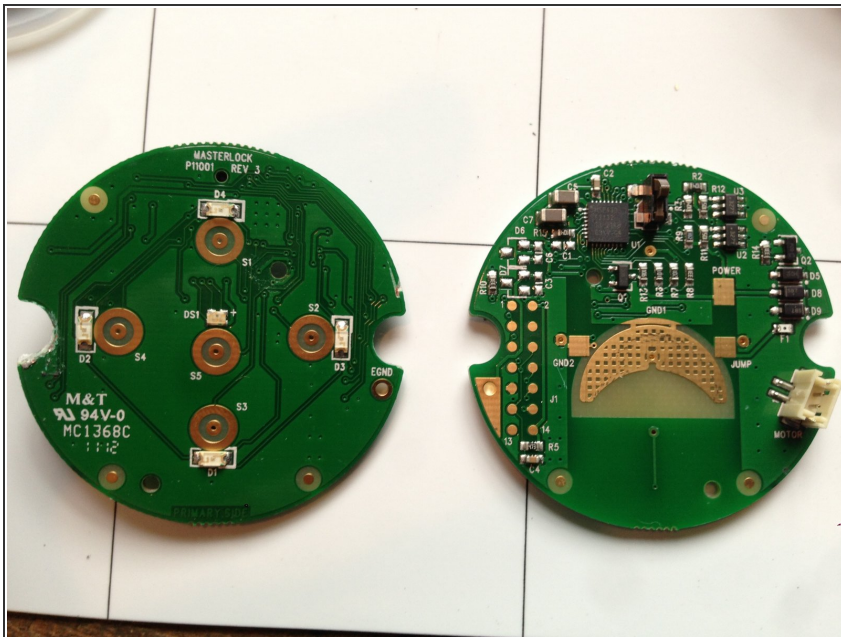
- Open lock with mechanisms exposed
 - Vibrator
 - Locking mechanisms

Step 4



- Complete internals of the lock
- Main processing board
 - MSP430 based!
 - Servo that interacts with locking components
- Reactive buttons and LEDs

Step 5



- The real lock PCB
- As a note, this device does not function as a lock once torn down. Repairability = 0.