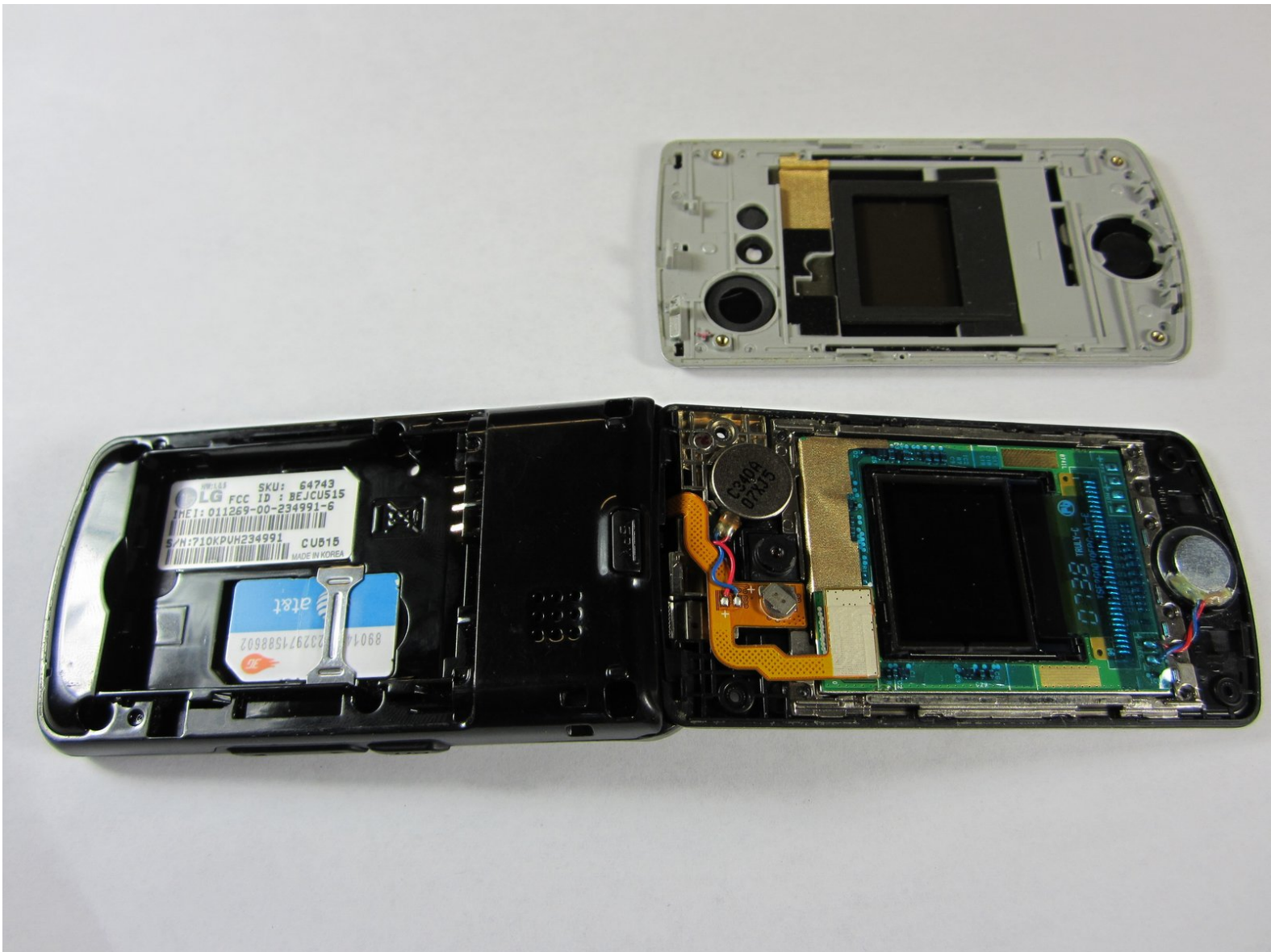




LG CU515 Front Housing Replacement

A short guide showing how to replace the front housing for the phone.

Written By: Zack Mintzer



INTRODUCTION

The front housing is the glossy front cover of the phone which can get scratched easily.

TOOLS:

- [Phillips #00 Screwdriver](#) (1)
 - [iFixit Opening Tools](#) (1)
-

Step 1 — Front Housing



- Insert one of the plastic opening tools between the silver and plastic black parts of the speaker at the top of the phone.
- Pry off the black plastic part to separate it from the silver part.

Step 2



- Use the screwdriver to remove four 3.0 mm Phillips #00 screws as shown.

Step 3



- Insert a the plastic opening tool in between the silver and black seam of the phone casing.
- Take off the front housing by running the plastic opening tool around the perimeter of the phone.

To reassemble your device, follow these instructions in reverse order.