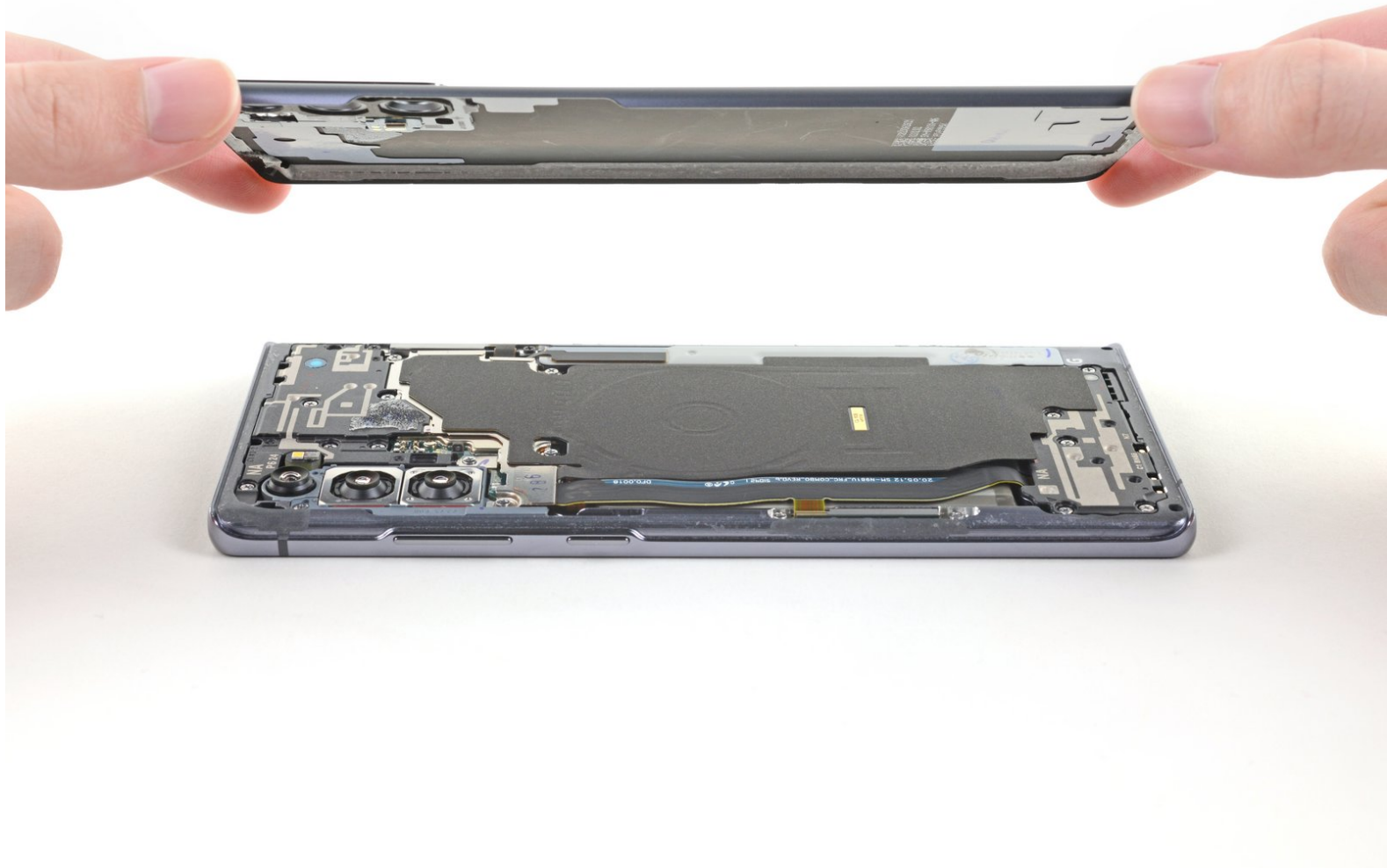




# Samsung Galaxy Note20 Rear Cover Replacement

How to remove or replace the rear cover on a Samsung Galaxy Note20.

Written By: Kyle Smith



---

## INTRODUCTION

Use this guide to remove the rear cover on your Samsung Galaxy Note20.

**For your safety, discharge the battery below 25% before disassembling your phone.** This reduces the risk of a dangerous thermal event if the battery is accidentally damaged during the repair. If your battery is swollen, [take appropriate precautions](#).

---

### TOOLS:

- [iOpener](#) (1)
  - [Suction Handle](#) (1)
  - [iFixit Opening Picks set of 6](#) (1)
-

## Step 1 — Heat the rear cover



- ⚠ Completely power off your phone before you begin disassembly.
- [Heat an iOpener](#) and apply it to the left side of the rear cover for one minute.
- ⚠ A hair dryer, heat gun, or hot plate may also be used, but be careful not to overheat the phone—the screen, internal battery, and the plastic rear cover are susceptible to heat damage.

## Step 2 — Insert an opening pick



- Apply a suction cup to the heated edge of the rear cover, as close to the edge as possible.
- Pull up on the suction cup with strong, steady force to create a gap between the rear cover and the frame.
  - ⓘ Depending on the age of your phone, this may be difficult. If you are having trouble, apply more heat to the edge and try again.
- Insert an opening pick into the gap.
  - ⚠ Don't insert the opening pick more than 5 mm into the phone or you risk damaging the internal components.

### Step 3 — Begin to cut the adhesive



**⚠** As you cut through the adhesive around the perimeter of the phone, don't insert the pick more than 5 mm to avoid damaging internal components.

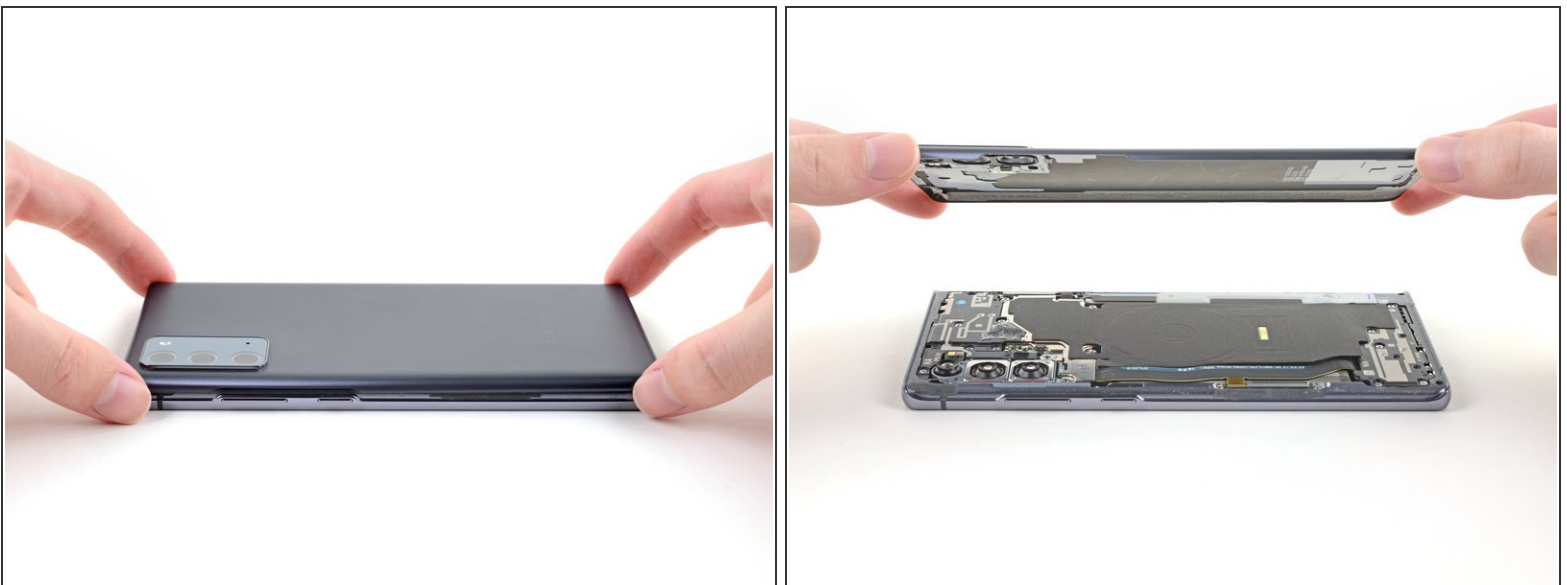
- Slide the opening pick along the left edge towards the bottom left corner to cut through the adhesive.
- Leave the pick inserted in the bottom left corner to prevent the adhesive from re-sealing.

## Step 4 — Cut along the perimeter of the rear cover



- Repeat the process of heating and cutting the adhesive along the three remaining sides of the rear cover.
- ⓘ You can insert each new opening pick in the gaps created by the opening picks left in each corner.
- As you proceed, leave an opening pick in each corner to prevent the adhesive from re-sealing.
- ⓘ If the rear cover is still attached to the frame after cutting through all four sides, try slicing through the adhesive again with an opening pick.

## Step 5 — Remove the rear cover



- Lift the rear cover straight up to remove it.

Compare your new replacement part to the original part—you may need to transfer remaining components or remove adhesive backings from the new part before installing.

**To reassemble your device, follow these instructions in reverse order.**

Take your e-waste to an [R2 or e-Stewards certified recycler](#).

Repair didn't go as planned? Try some [basic troubleshooting](#), or ask our [Samsung Galaxy Note20 Answers community](#) for help.