

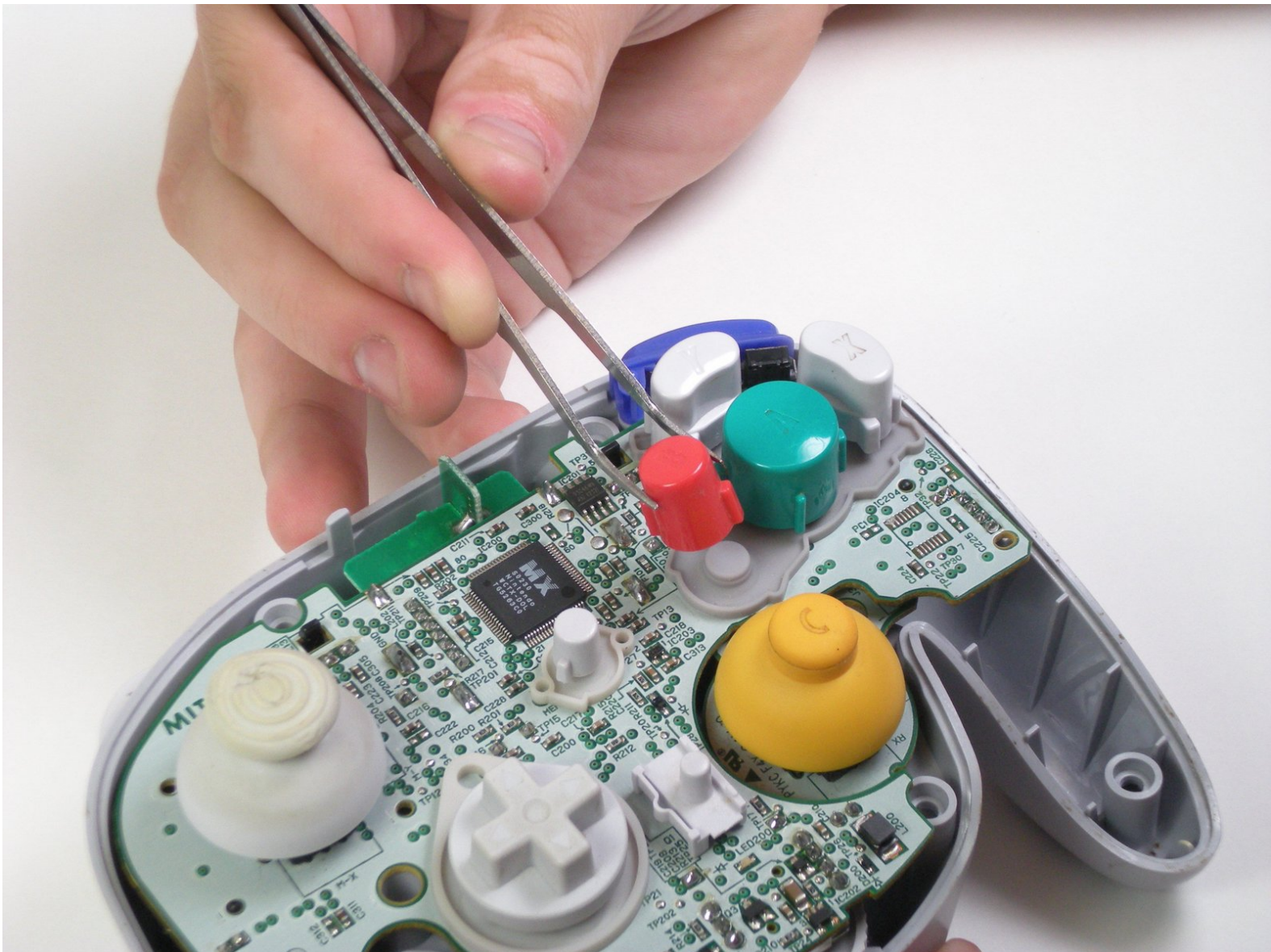


Nintendo WaveBird Wireless Controller

Buttons Replacement

Remove the following buttons from the Nintendo WaveBird Wireless Controller: A, B, X, Y, Z, D-Pad, Power Switch, and Start button.

Written By: Douglas



This document was generated on 2021-05-28 07:42:19 PM (MST).

INTRODUCTION

This guide will teach you how to replace defective buttons. You may need to clean under the buttons if you have [sticky buttons](#).

TOOLS:

- [Y1 Tri-point Screwdriver](#) (1)
- [Tweezers](#) (1)

Import tools from prerequisite guide.

Step 1 — Batteries



- Pull down on the battery cover release lever and pull back to remove the cover.

Step 2



- Remove both batteries from the device.

Step 3 — Front Panel



- Remove the eight 9 mm screws from the back panel using the Tri-point Y1 screwdriver.
- ☞ During reassembly, firmly hold the panels of the controller together while replacing the screws so the panels do not separate.

Step 4



- Carefully turn over the controller and place it on a flat surface.
- Slowly separate the top panel from the bottom panel.
- ⓘ The buttons are loose and may fall off the motherboard.
- Once separated, set aside the top panel.
- ✦ During reassembly, make sure the front panel lines up with the buttons so they slide back into place.

Step 5 — Buttons



- Use tweezers to remove the buttons.
- ⓘ It may be easier to remove the A button off of the pad by lifting it with your fingers.
- 📌 During reassembly, make sure all buttons are in their respective sockets so they match up with the front panel.

To reassemble your device, follow these instructions in reverse order.