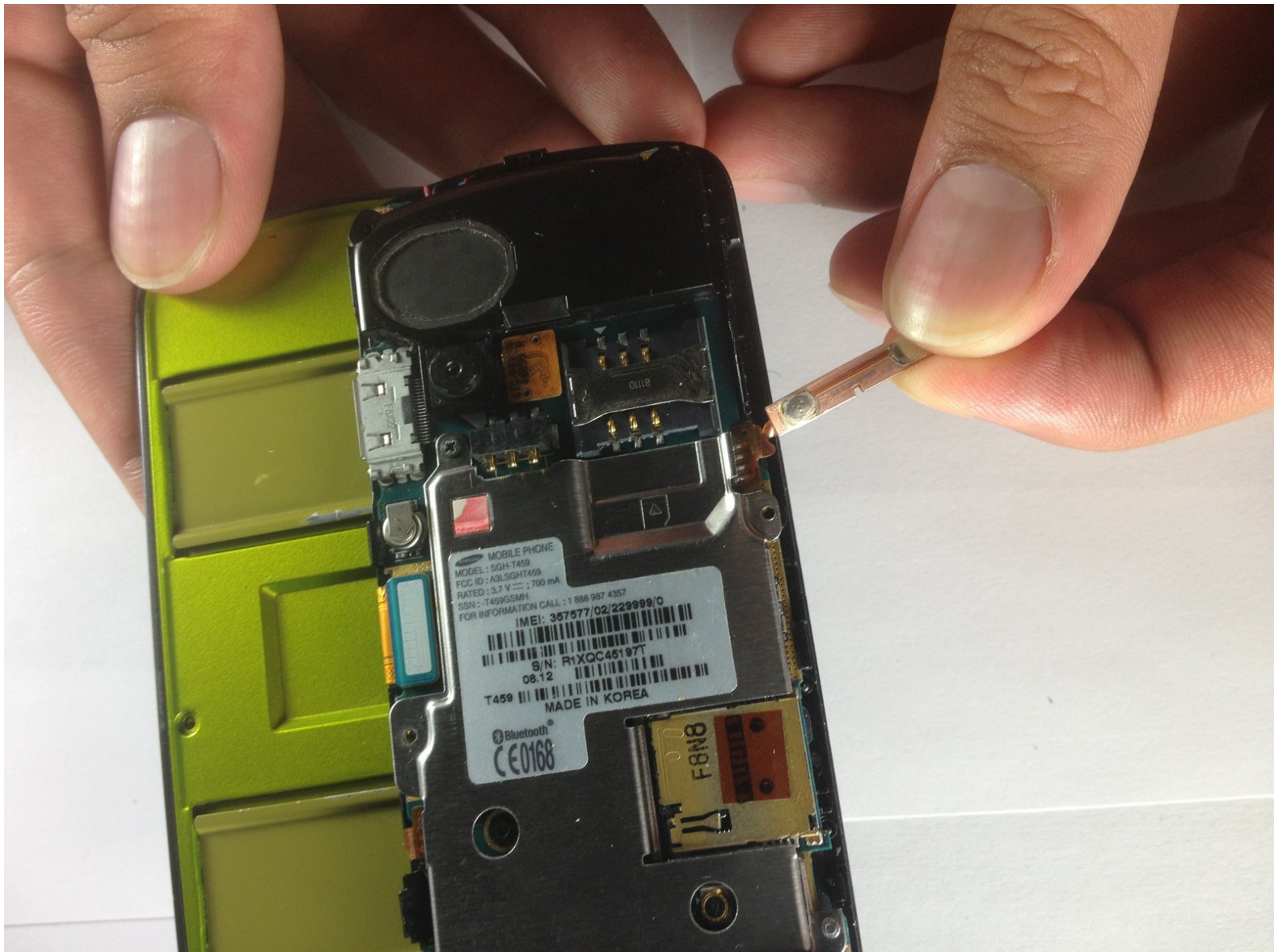




Disassembling Samsung Gravity SGH-T459 Keypad

This guide will help disassemble the keypad from the rest of the cell phone.

Written By: William Glatz



INTRODUCTION

This guide will teach you how disassemble and reassemble the keypad to your Samsung Gravity SGH-T459.

TOOLS:

- [Phillips #1 Screwdriver](#) (1)
 - [iFixit Opening Tools](#) (1)
 - [Tweezers](#) (1)
-

Step 1 — Disassembling Samsung Gravity SGH-T459 Back Cover



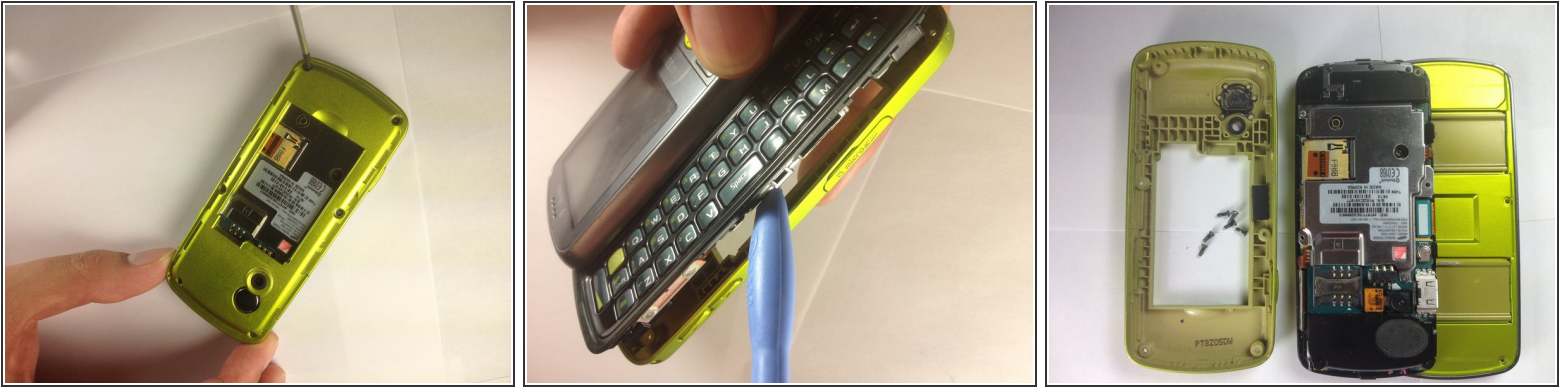
- Press and hold the End key to power down the cell phone.
- Gently remove the back cover with your fingers by sliding it in the direction of the arrows.

Step 2 — Disassembling Samsung Gravity SGH-T459 Battery



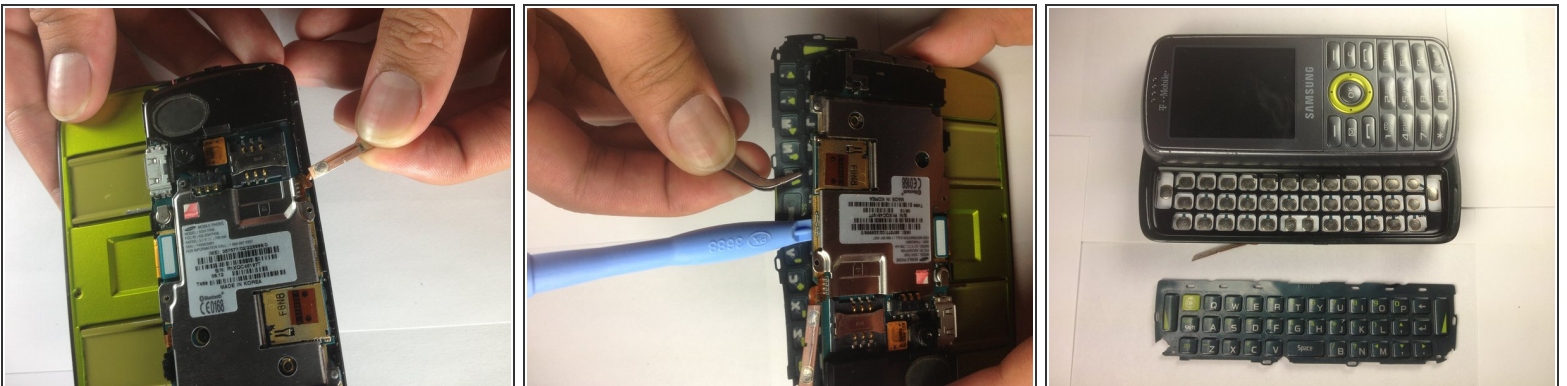
- Gently lift up and remove battery with your fingers in the direction of the arrows.

Step 3 — Rear Case



- Hold the cell phone steady with one hand. With the other hand, use a Phillips screwdriver to remove all 6 screws around the edges of the rear case.
- Slide the phone open.
- Use a plastic prying tool to pry open the edge of the green trim near the space bar of the keypad. You should hear the rear case unsnap.
- Gently lift and remove the rear case from the cell phone.

Step 4 — Keypad



- Gently remove the two button contacts with your fingers.
- Use a plastic prying tool to pry the keypad away from the circuit board.
- Use tweezers to gently remove the keypad.

To reassemble your device, follow these instructions in reverse order.