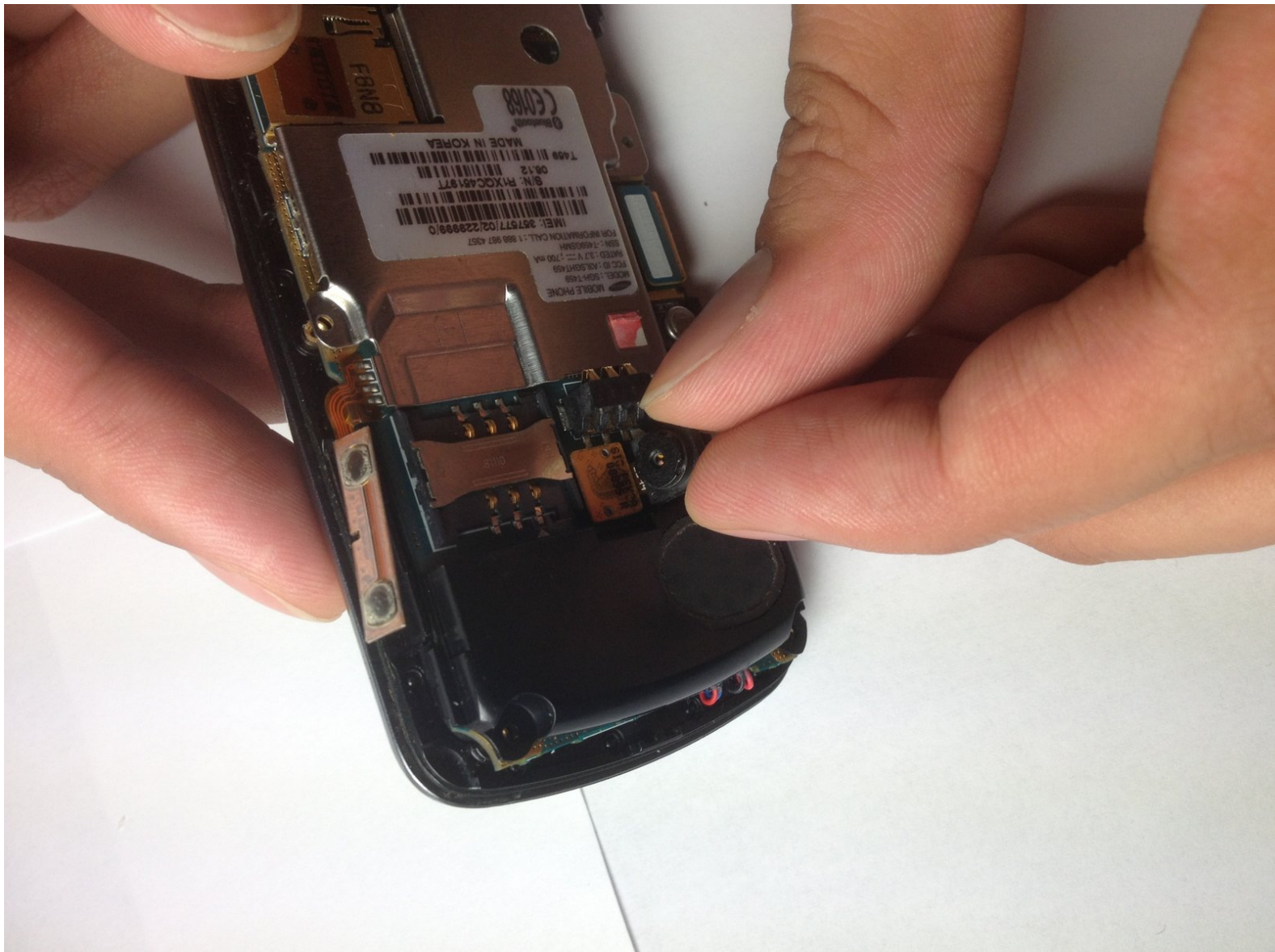




Disassembling Samsung Gravity SGH-T459 1.3 megapixel camera

This guide will help disassemble the 1.3 megapixel camera from the rest of the cell phone.

Written By: William Glatz



INTRODUCTION

This guide will teach you how disassemble and reassemble 1.3 megapixel camera to your Samsung Gravity SGH-T459.

TOOLS:

- [Phillips #1 Screwdriver](#) (1)
 - [iFixit Opening Tools](#) (1)
-

Step 1 — Disassembling Samsung Gravity SGH-T459 Back Cover



- Press and hold the End key to power down the cell phone.
- Gently remove the back cover with your fingers by sliding it in the direction of the arrows.

Step 2 — Disassembling Samsung Gravity SGH-T459 Battery



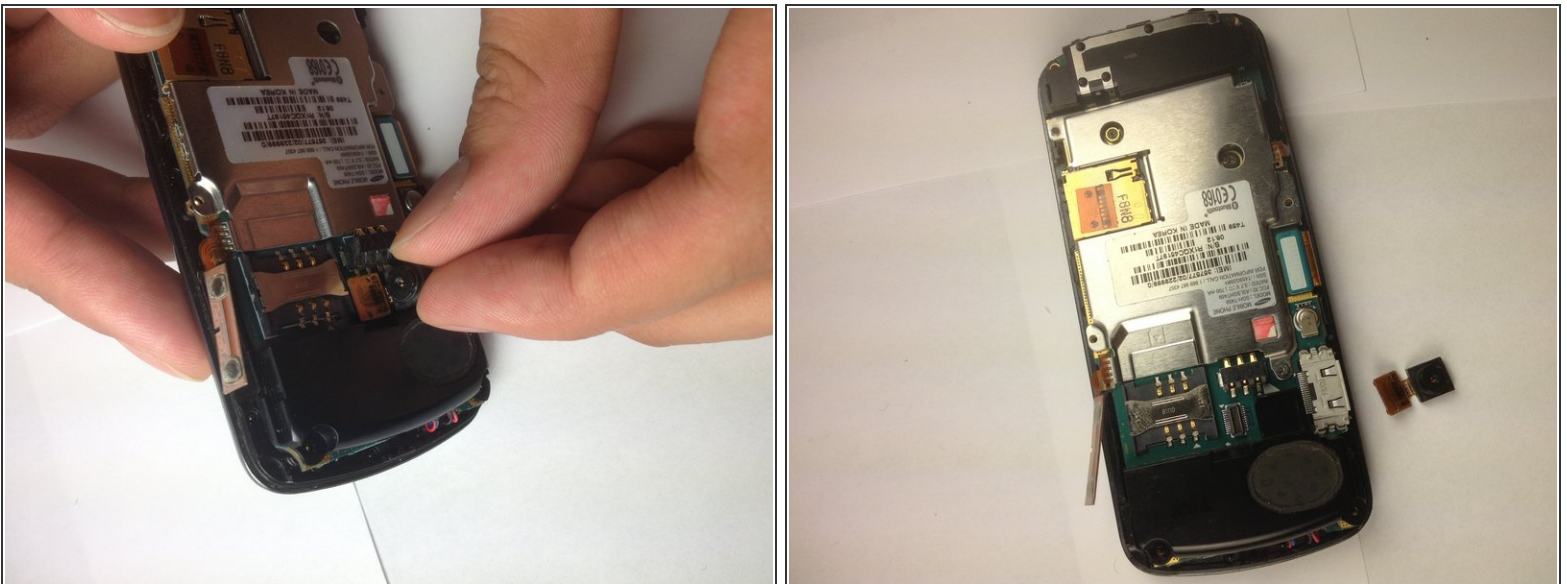
- Gently lift up and remove battery with your fingers in the direction of the arrows.

Step 3 — Rear Case



- Hold the cell phone steady with one hand. With the other hand, use a Phillips screwdriver to remove all 6 screws around the edges of the rear case.
- Slide the phone open.
- Use a plastic prying tool to pry open the edge of the green trim near the space bar of the keypad. You should hear the rear case unsnap.
- Gently lift and remove the rear case from the cell phone.

Step 4 — 1.3 megapixel camera



- Gently lift and remove the 1.3 megapixel camera with your fingers.

To reassemble your device, follow these instructions in reverse order.