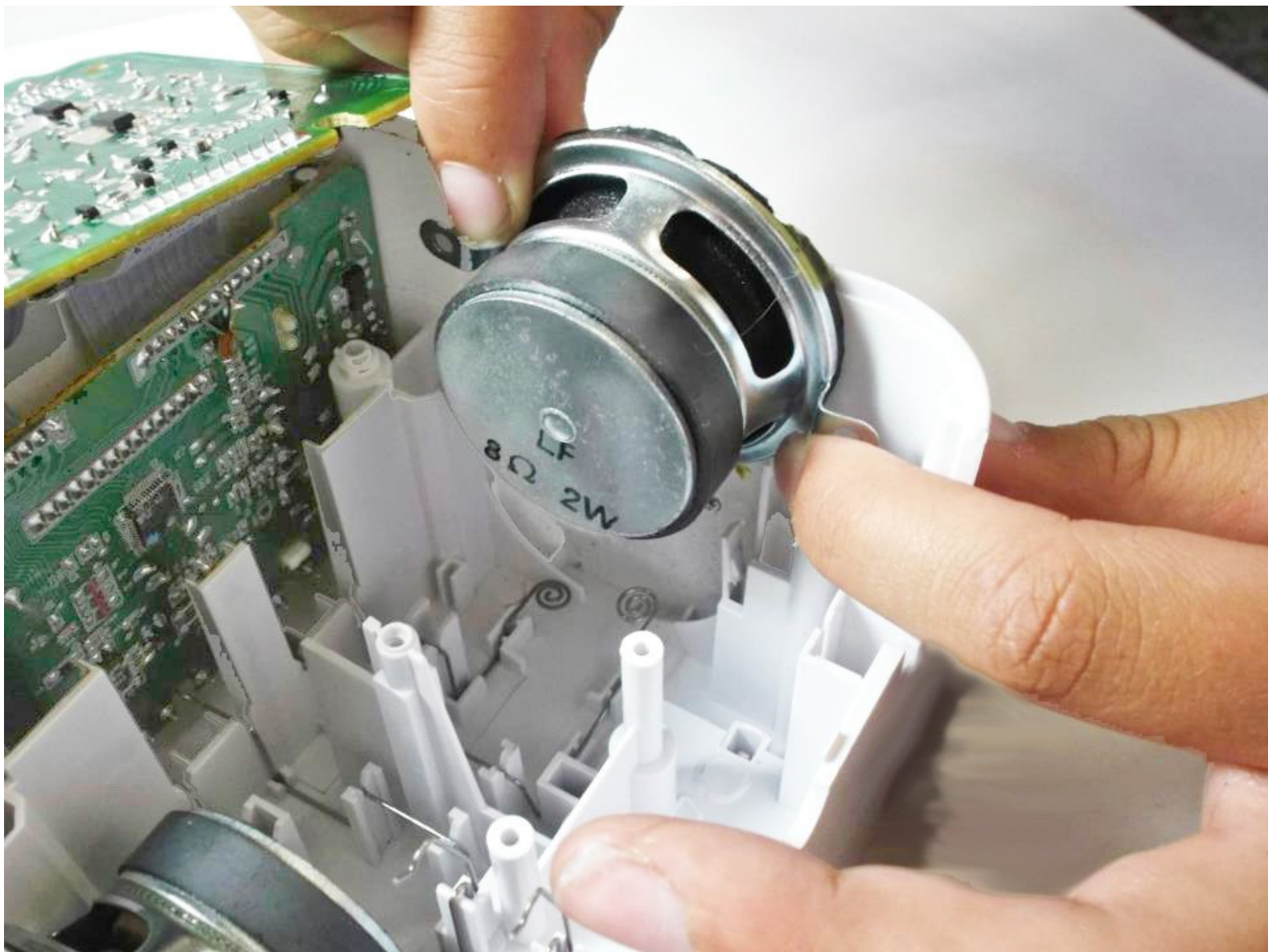




Audiovox CR8030iE5 Speakers Replacement

This guide will show you how to install new speakers into your Audiovox to replace the old, faulty speakers.

Written By: Nab Sengupta



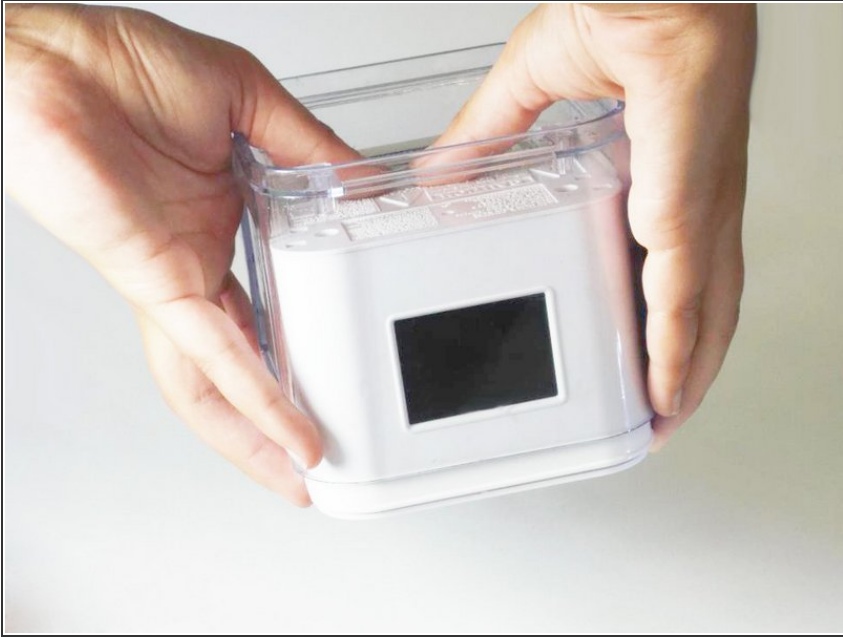
INTRODUCTION

If the speakers aren't working... install new ones! This guide shows you how to change out old speakers that may not be working right.

TOOLS:

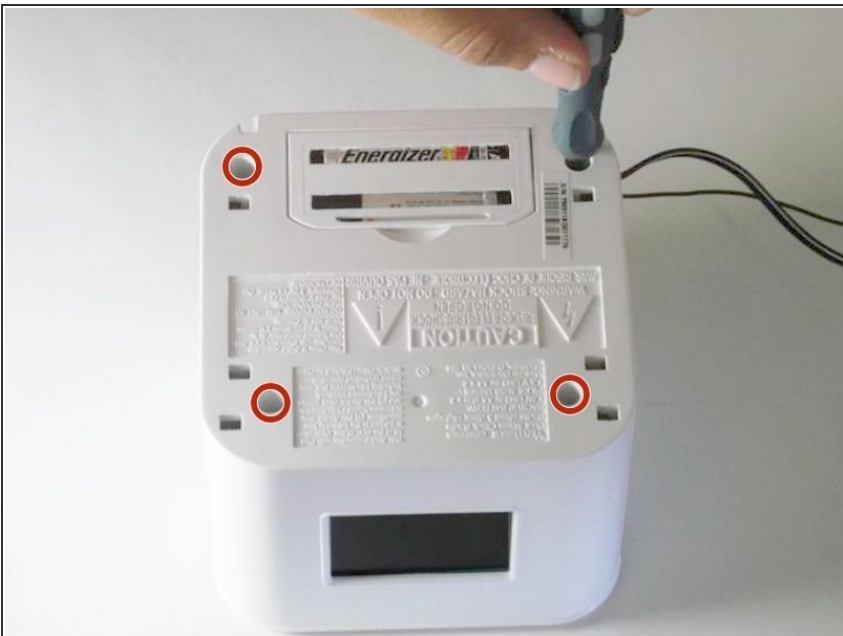
- [Phillips #1 Screwdriver](#) (1)
 - [iFixit Opening Tools](#) (1)
 - [Phillips #00 Screwdriver](#) (1)
-

Step 1 — Top-Casing



- ⓘ Before opening your Audiovox, be sure to turn it upside down.
- Begin by applying constant pressure to the base of your Audiovox while holding the plastic casing. Do this until the plastic casing is completely removed.

Step 2



- Insert a Phillips #1 screwdriver into the hole at the corner of the base and remove the screw.
- Repeat this step for the remaining other three screws.

Step 3



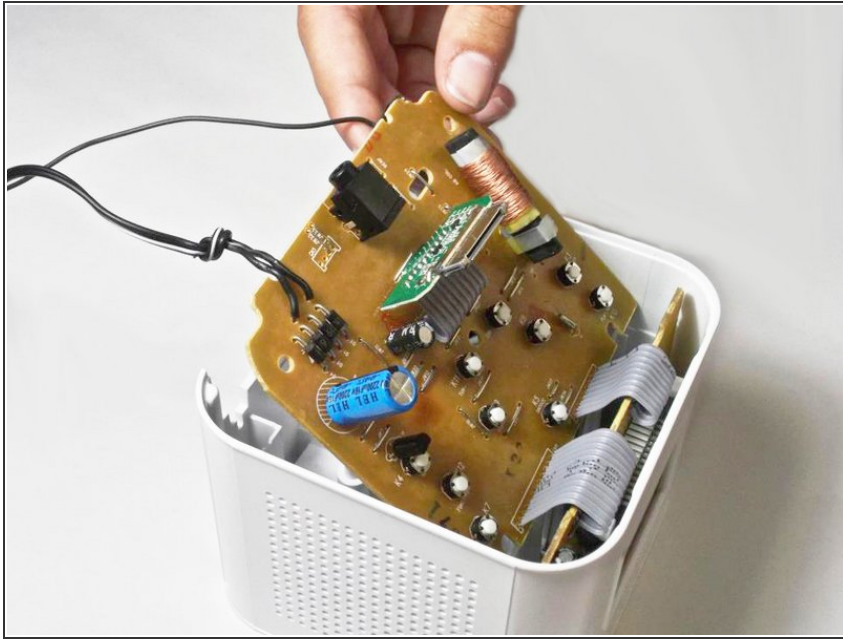
- **i** Make sure to orient the Audiovox right side up.
- Gently pull off the top panel of the Audiovox, as shown in the picture, to ensure that the panel detaches properly.

Step 4



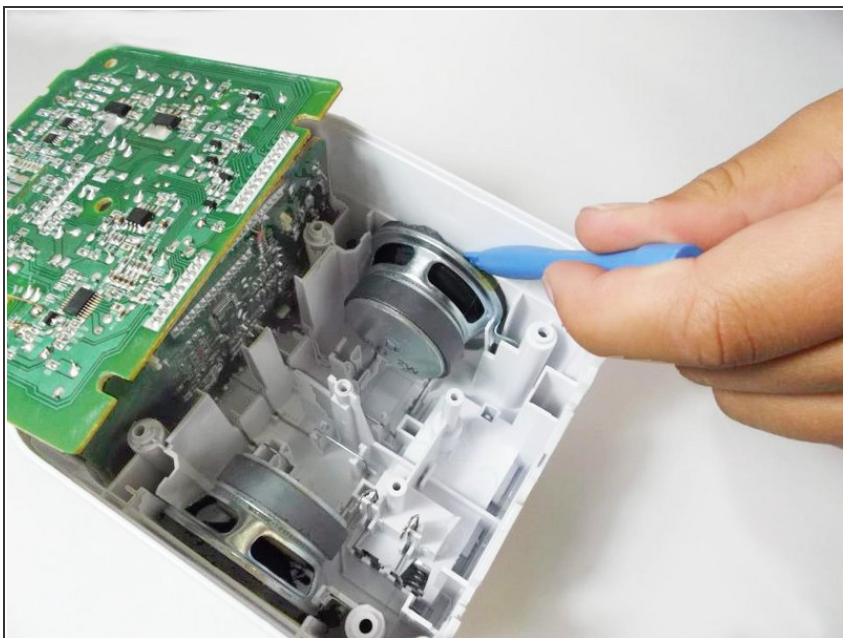
- Using a Phillips #1 screwdriver, remove the screw found in the middle of the board.

Step 5



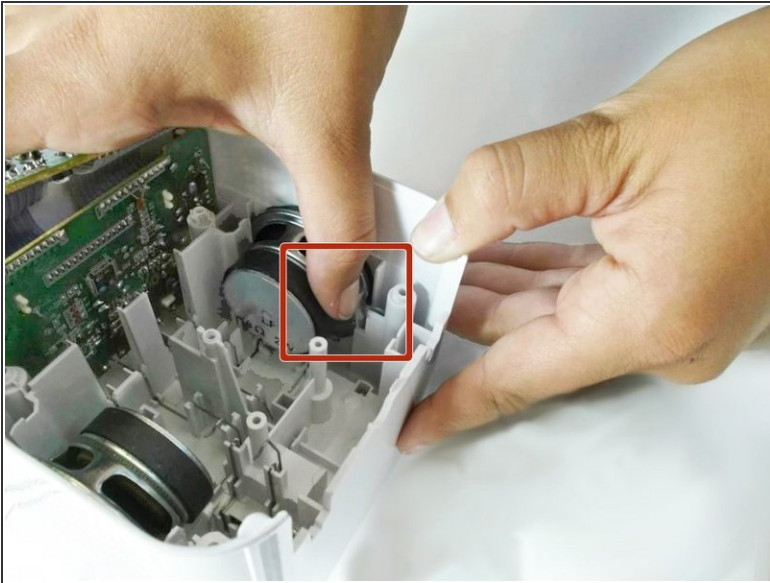
- Gently, as to not disconnect any of the attached wires, pull back the board to view the soldered connections (on the other side) as well as the internal components.

Step 6 — Speakers



- ⓘ Notice that there are two speakers located on opposite sides of the inside of your Audiovox.
- Slide a plastic opening tool along the rim of the faulty speaker where it meets the plastic casing.
- ⓘ This action removes any glue or adhesive that holds the speaker to the wall of your Audiovox.

Step 7



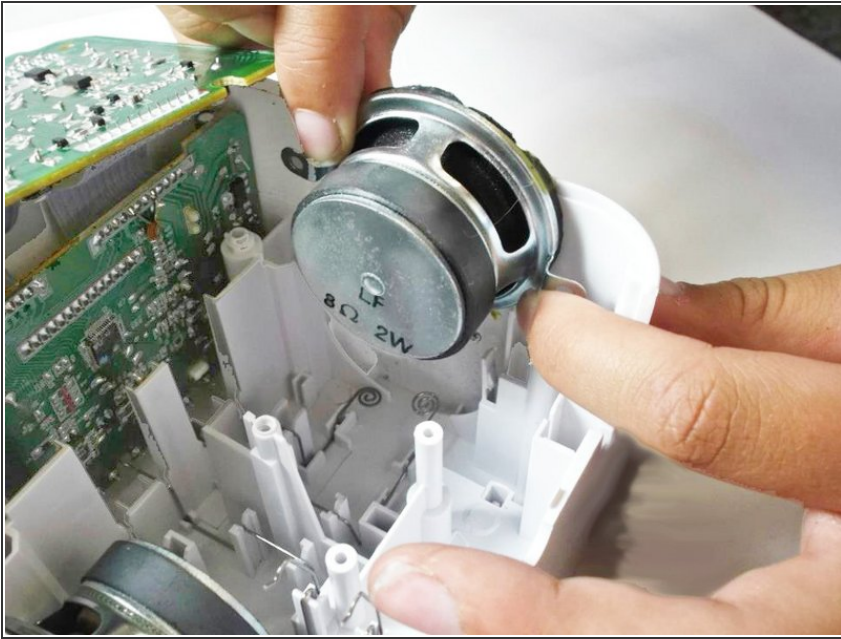
- Using your thumb, applying constant pressure, pull back the plastic tab towards the speaker and away from the metal bracket.
- Simultaneously insert a Phillips #00 screwdriver into the square hole on the underside of clock and push through to lift the metal bracket off of the plastic tab.

Step 8



- Repeat the second part of "Step 7" for the other hole.

Step 9



- Pull up on the metal brackets, found on either side, until the speaker is completely removed. Removing the speaker is rather challenging. Don't get discouraged if it takes multiple attempts!

⚠ Each speaker contains a powerful magnet. Try to keep them away from nearby metal objects.

To reassemble your device, follow these instructions in reverse order.