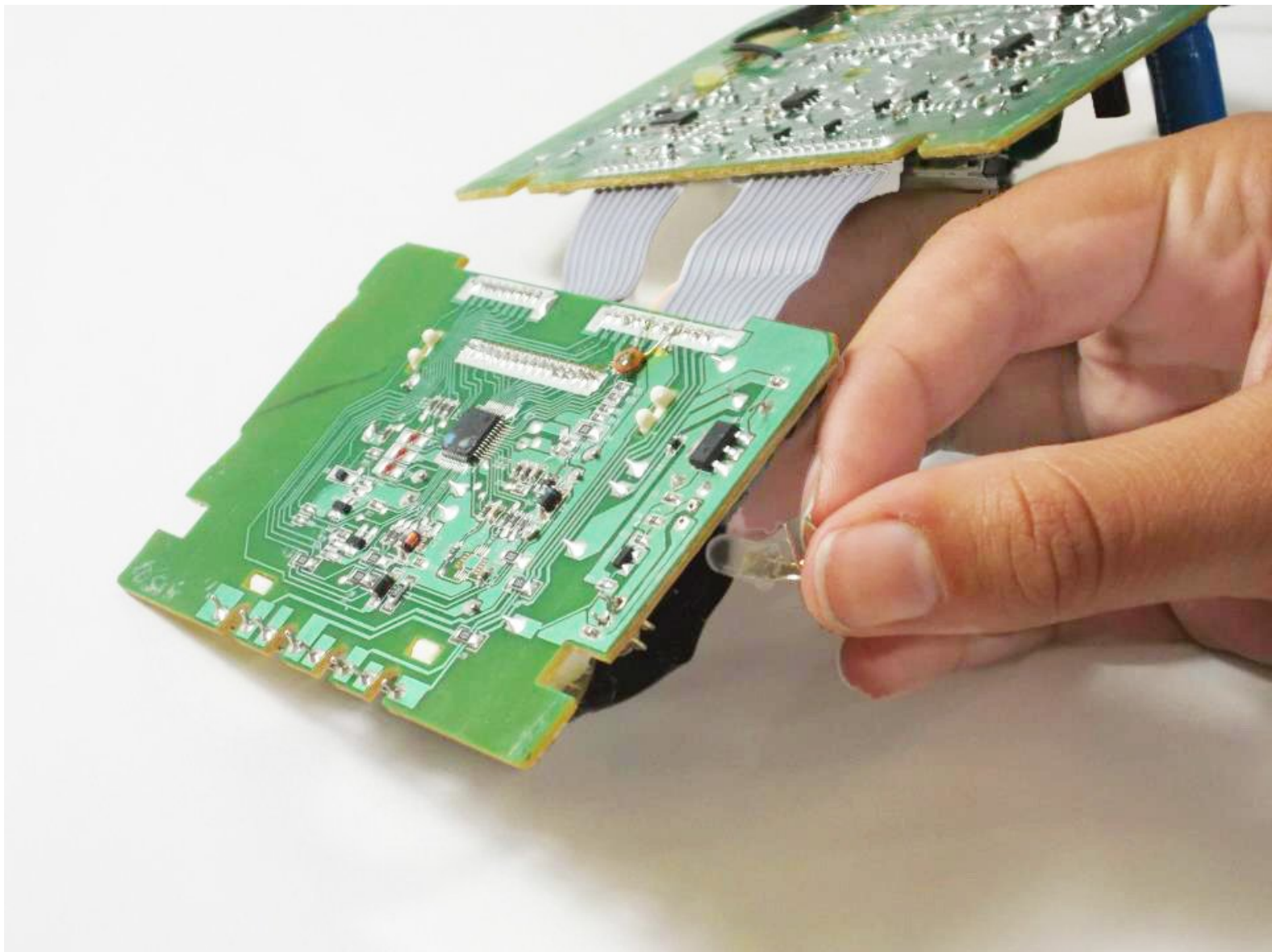




# Audiovox CR8030iE5 Backlight Replacement

This guide will show you how to install a backlight into your Audiovox to replace the old, faulty one.

Written By: Nab Sengupta



---

## INTRODUCTION

If the backlight isn't working, install a new one! This guide shows you how to change out the old backlight that may not be working right.

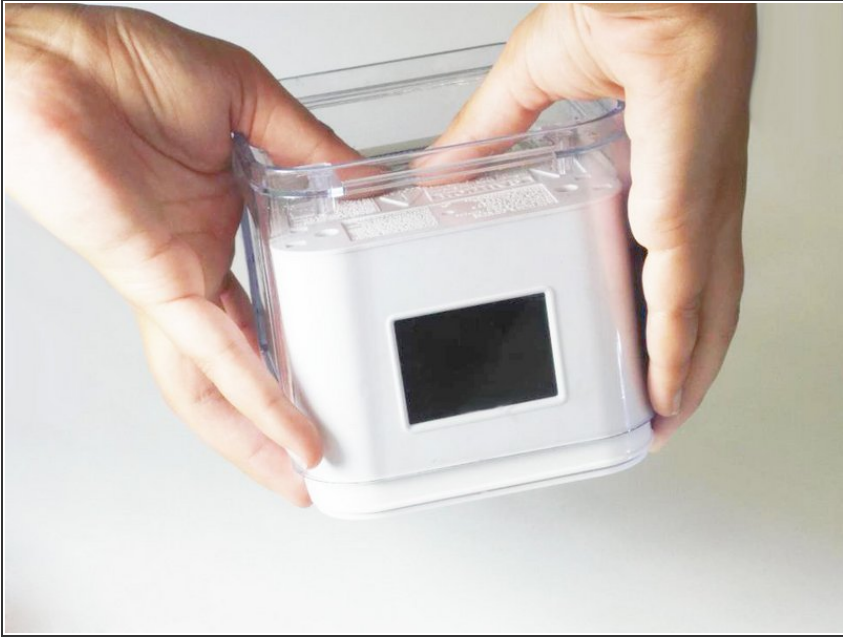
Note: This guide involves soldering and should not be done by children. If you do not know how to solder, check out [How To Solder and Desolder Connections](#) to learn how before beginning this guide.

---

### TOOLS:

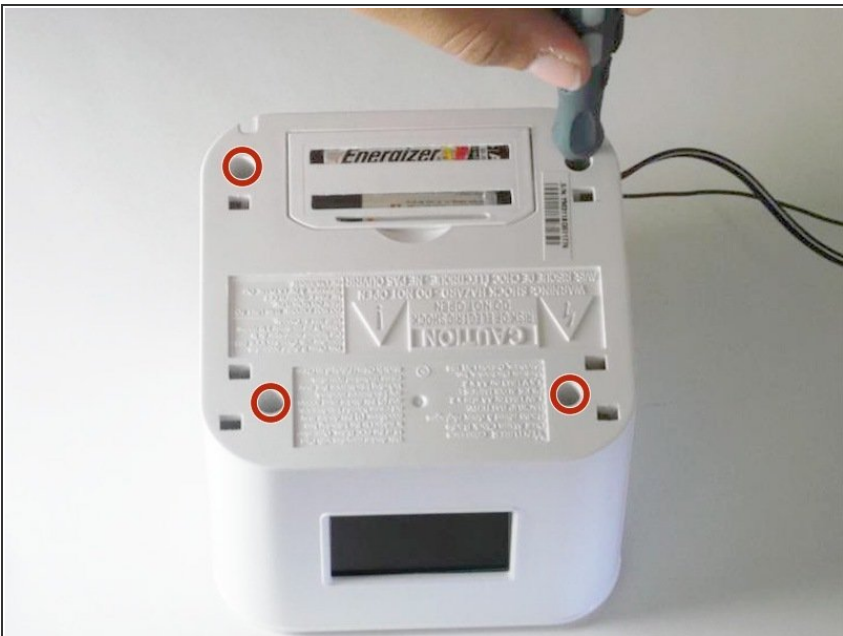
- [Phillips #1 Screwdriver](#) (1)
  - [Soldering Workstation](#) (1)
-

## Step 1 — Top-Casing



- ⓘ Before opening your Audiovox, be sure to turn it upside down.
- Begin by applying constant pressure to the base of your Audiovox while holding the plastic casing. Do this until the plastic casing is completely removed.

## Step 2



- Insert a Phillips #1 screwdriver into the hole at the corner of the base and remove the screw.
- Repeat this step for the remaining other three screws.

### Step 3



- **i** Make sure to orient the Audiovox right side up.
- Gently pull off the top panel of the Audiovox, as shown in the picture, to ensure that the panel detaches properly.

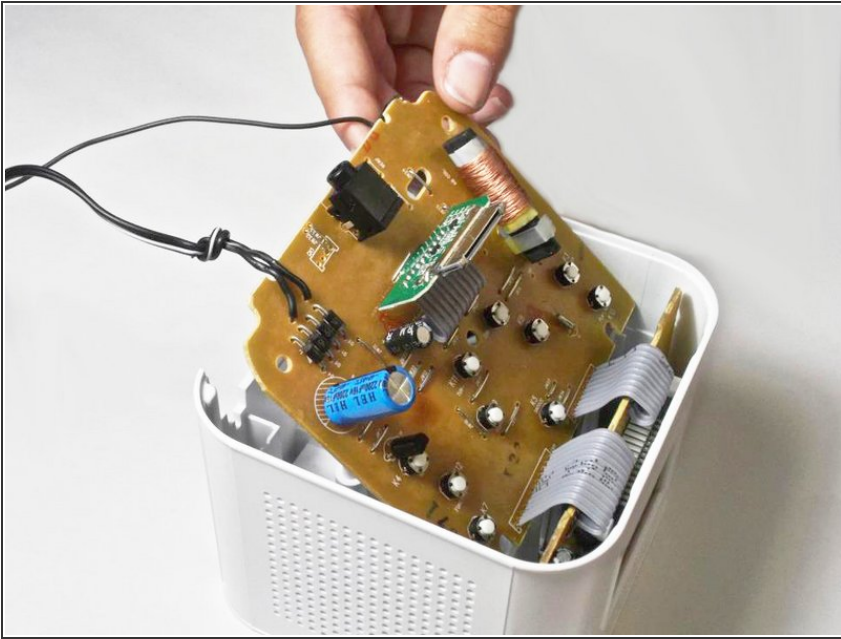
### Step 4



- Using a Phillips #1 screwdriver, remove the screw found in the middle of the board.



## Step 5



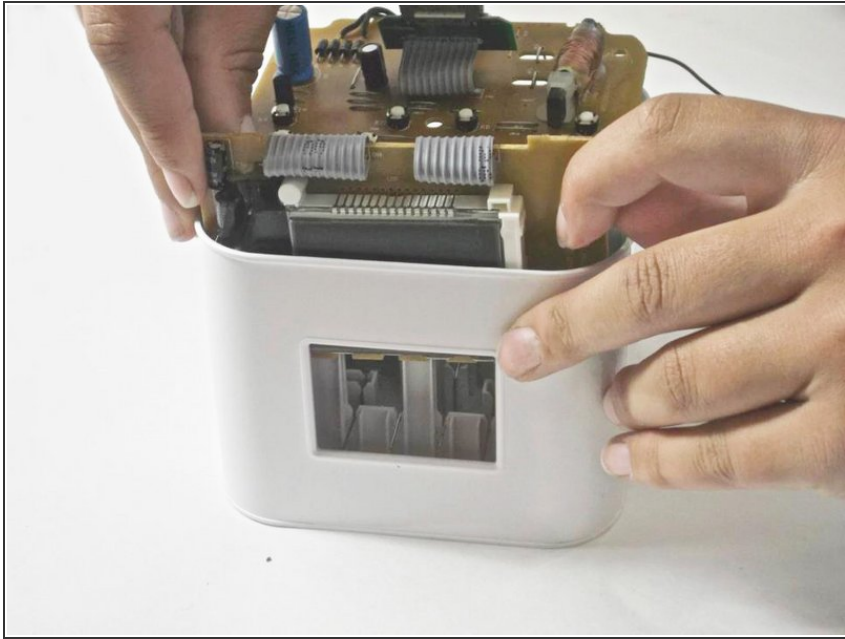
- Gently, as to not disconnect any of the attached wires, pull back the board to view the soldered connections (on the other side) as well as the internal components.

## Step 6 — Backlight



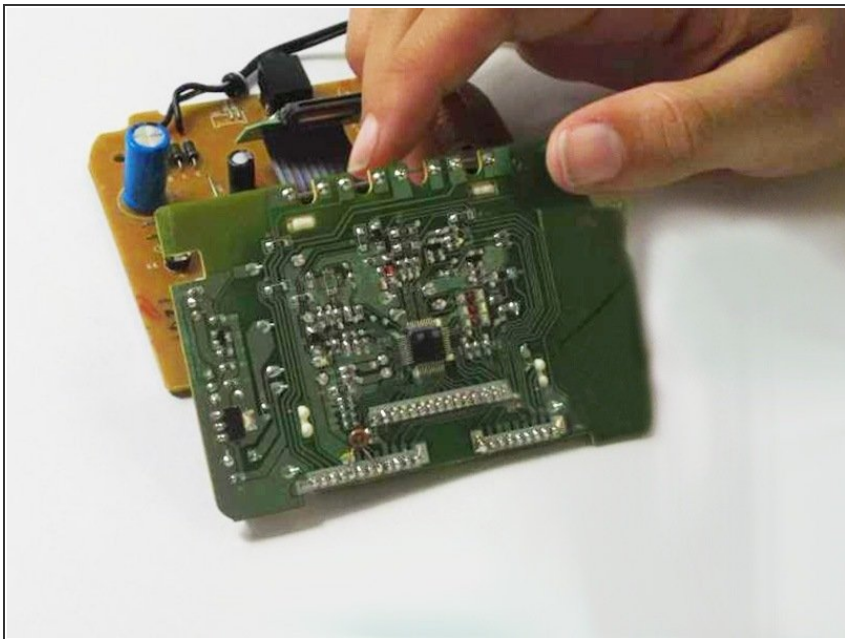
- Insert a Phillips #1 screwdriver into the corner, square, holes and push the backlight board up away from the plastic casing.

## Step 7



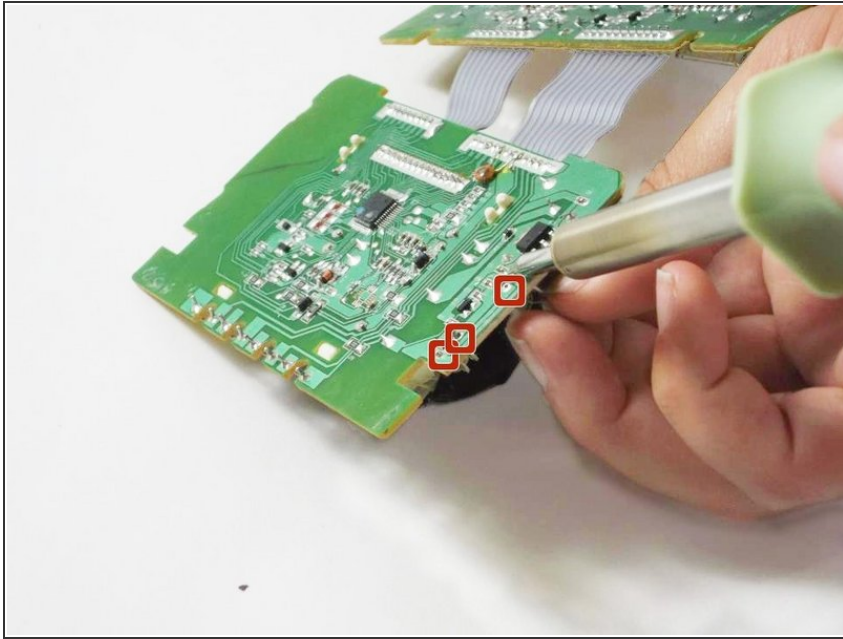
- Carefully, pull up on the board to remove it entirely from the plastic casing.

## Step 8



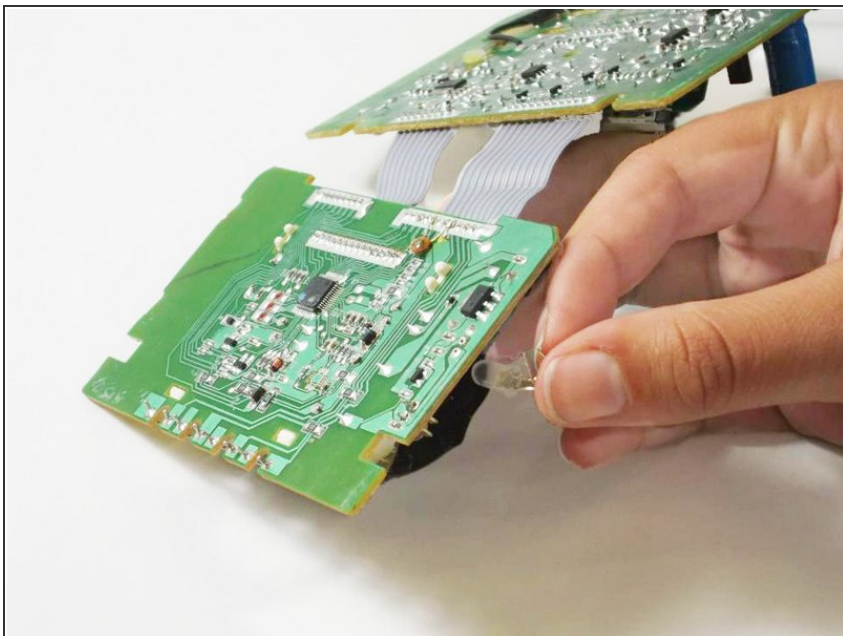
- ⓘ Flip the backlight board over to view the underside.

## Step 9



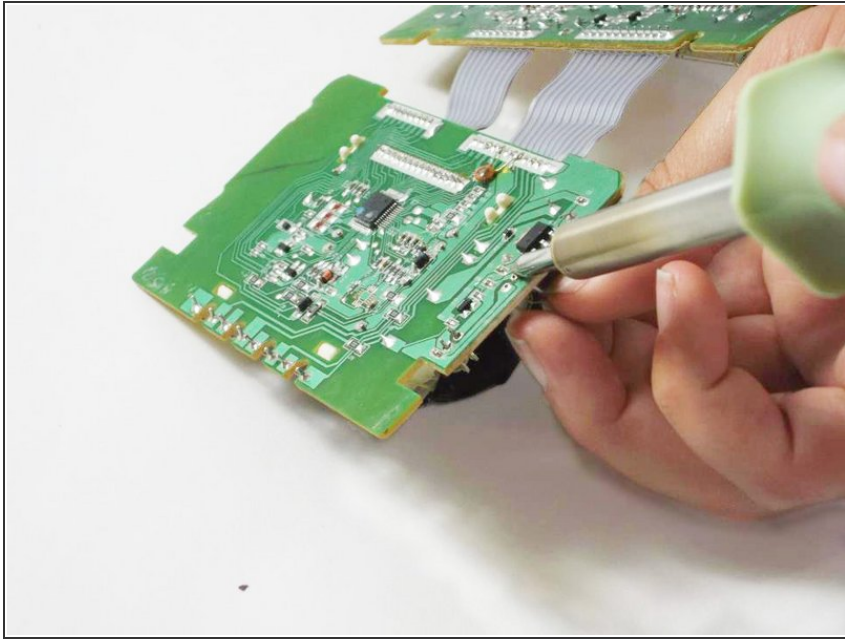
- One by one, de-solder the four wires (two wires corresponding to each LED bulb) that attach the backlight to the board.
- ⓘ If you don't know how to solder, check out [How To Solder and Desolder Connections](#).
- ⚠ Soldering irons are extremely hot and can burn you if you touch them!
- ⚠ If you hold the soldering iron tip at the same spot for too long, it can strip the metal from the plastic board. You may not be able to solder wire to that point again.

## Step 10



- Remove the two LED light bulbs.
- Insert each wire from the new LED bulbs into the respective holes.

## Step 11



- One by one, solder the backlight wires back into place.
- ⓘ If you don't know how to solder, check out [How To Solder and Desolder Connections](#).
- ⚠ Soldering irons are extremely hot and can burn you if you touch them!
- ⚠ If you hold the soldering iron tip at the same spot for too long, it can strip the metal from the plastic board. You may not be able to solder wire to that point again.

To reassemble your device, follow these instructions in reverse order.