



# Toshiba Satellite A105-S4284 Hard Drive Replacement

Replace the hard drive in your laptop.

Written By: pfedigan



---

## INTRODUCTION

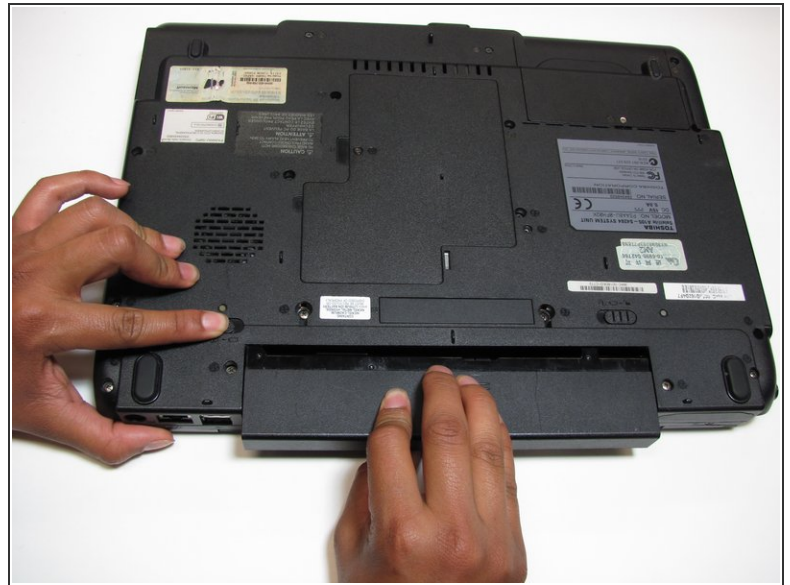
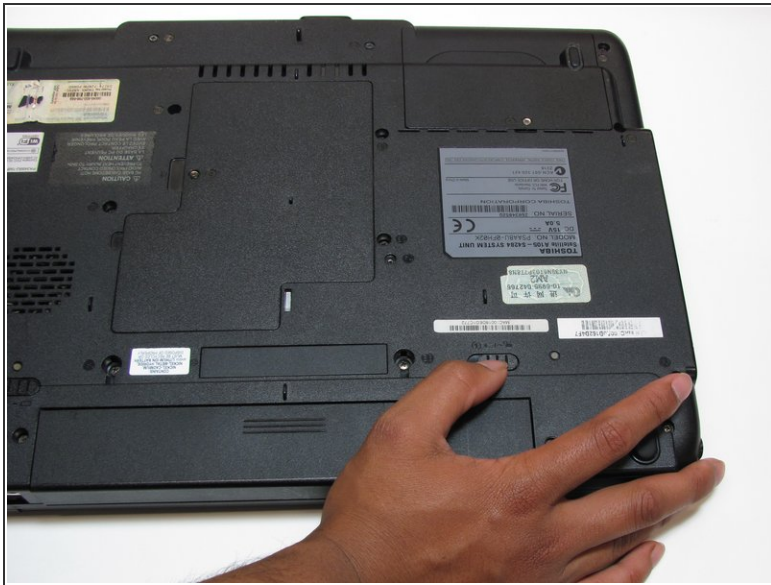
The hard drive is the storage space of your computer, containing your music, photos, programs, and documents. It also houses your operating system. Save all the files you want to keep on an external device before installing a new hard drive, as replacing the hard drive basically gives you a new computer.

---

### TOOLS:

- [Phillips #1 Screwdriver](#) (1)

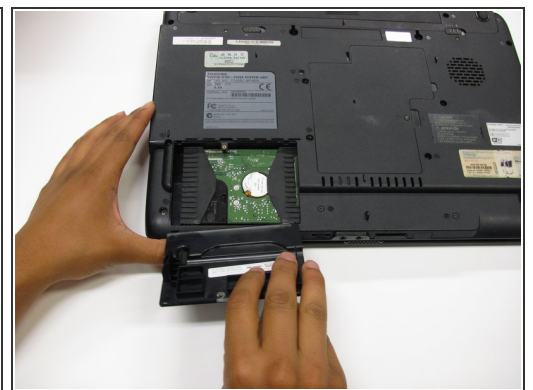
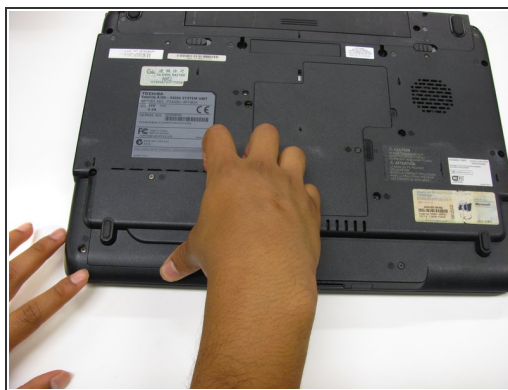
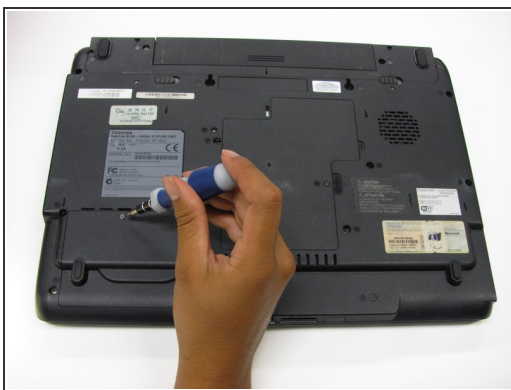
## Step 1 — Battery



**!** Make sure your computer is turned off and the computer is not plugged in.

- Turn your laptop upside down, and slide the right release tab outward.
- Using your left hand, hold the left release tab towards the left side and then pull the battery out.

## Step 2 — Hard Drive



**i** Turn the laptop around 180 degrees.

- Unscrew the 4 mm screw with the Philips #1 screwdriver.
- Lift and remove the hard drive cover.



### Step 3



- Pull on the rubber tab to slide the hard drive to the left.
- Pick up the near side of the hard drive and pull it out the back.

To reassemble your device, follow these instructions in reverse order.