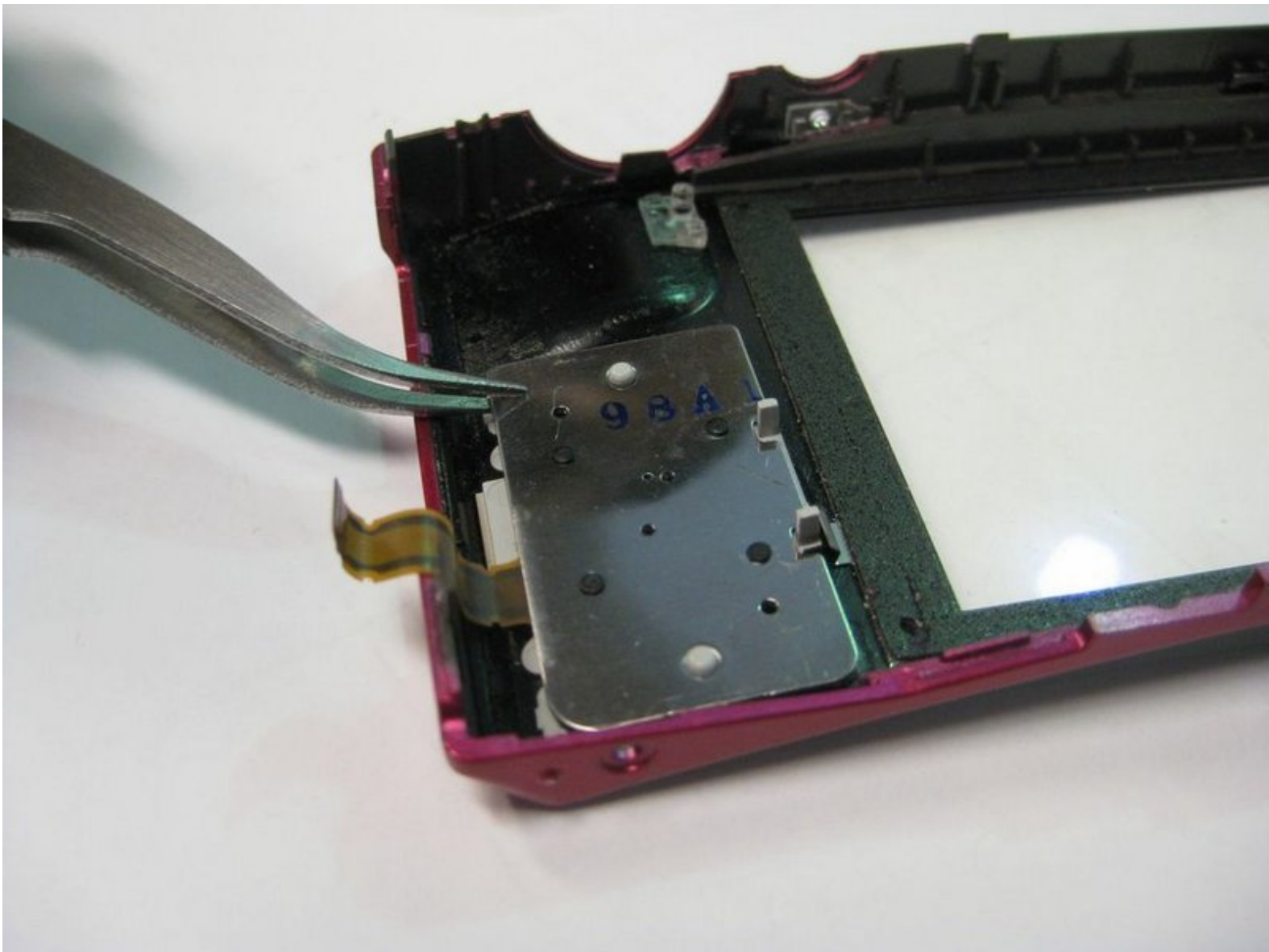




Rotary Multi Selector Wheel Removal

This guide will help you remove the rotary multi selector wheel for this device for repair, replacement, or maintenance.

Written By: Andrew Lau



INTRODUCTION

This guide is for the removal or installation of the rotary multi selector wheel.

TOOLS:

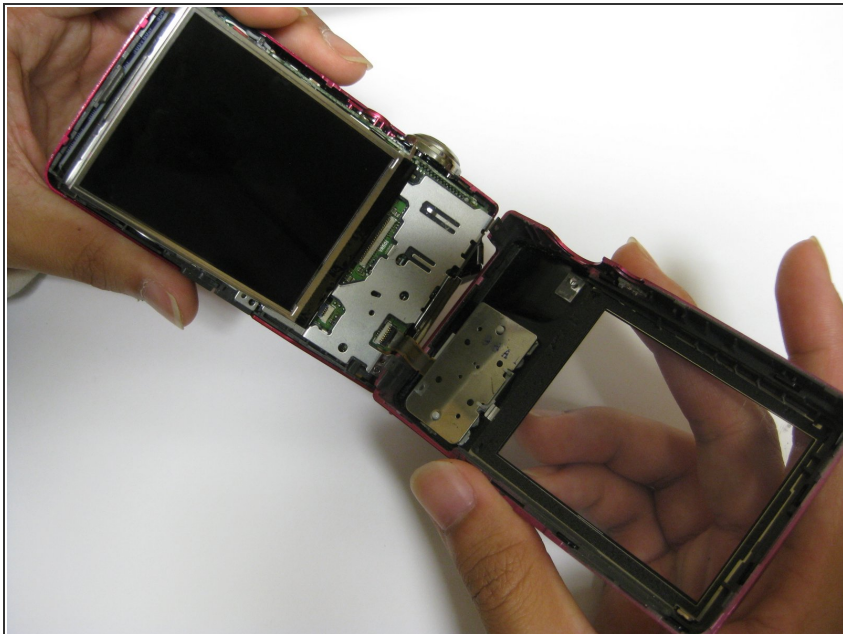
- [iFixit Opening Tools](#) (1)
 - [Tweezers](#) (1)
-

Step 1 — Back Cover Removal



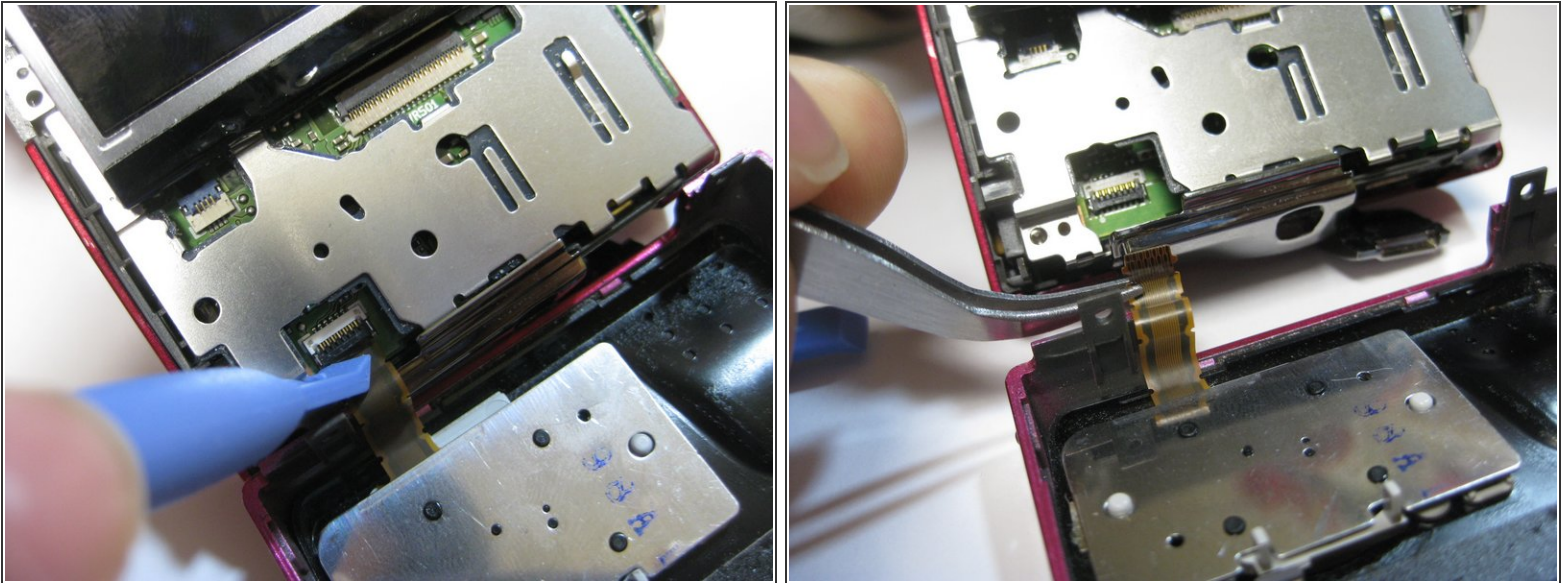
- Unscrew the two 3.5mm Phillips screws from the side with the AV outlet.
- Unscrew the 3.5mm Phillips screw from the opposite side of the camera.
- Unscrew the six 3.5mm Phillips screws from the bottom of the camera.

Step 2



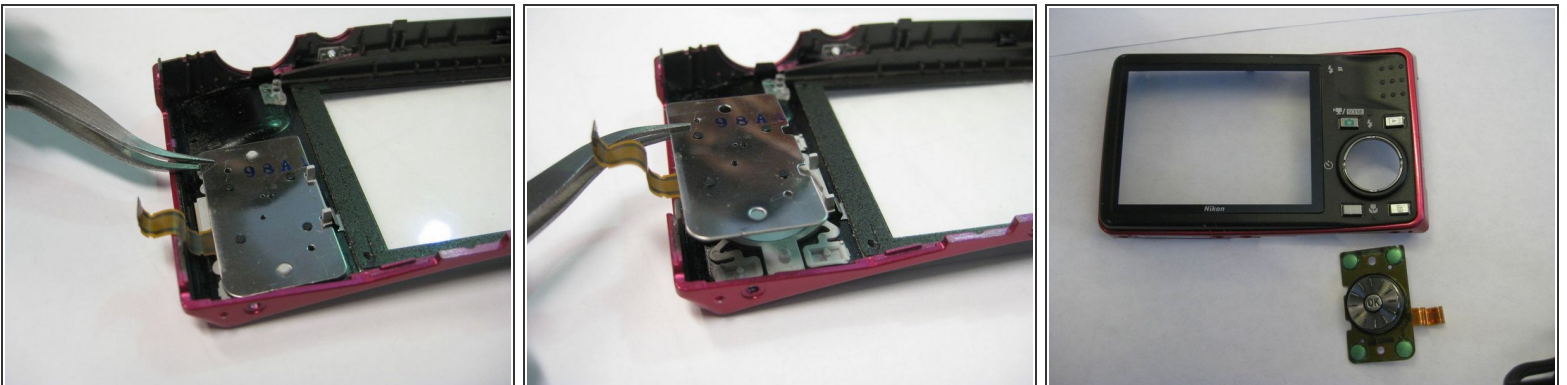
- Carefully remove the back casing from the camera.
- ⚠** Be mindful when removing the back casing as there is a ribbon that still connects the back casing to the motherboard.

Step 3 — Detaching Ribbon



- Place the plastic opening tool underneath the ribbon tab as shown. Gently lift the tab up.
- Gently pull the ribbon from the logic board with tweezers.
- With the ribbon disconnected, the back casing should now be detached from the rest of the camera.

Step 4 — Rotary Multi Selector Wheel



- Lift up the metal cover and its button slowly using the tweezers.

To reassemble your device, follow these instructions in reverse order.

