



Toshiba Satellite L455-S5975 Keyboard Replacement

Learn how to remove and replace your keyboard.

Written By: Mike Kennedy



INTRODUCTION

This guide is useful for replacing a broken keyboard on your laptop. In this replacement guide, you will remove the old keyboard and install the new one.

Note: Before starting any removal or installation, remember to turn off the device and to remove it from the power source.

TOOLS:

- [iFixit Opening Tools](#) (1)
 - [Phillips #00 Screwdriver](#) (1)
-

Step 1 — Keyboard



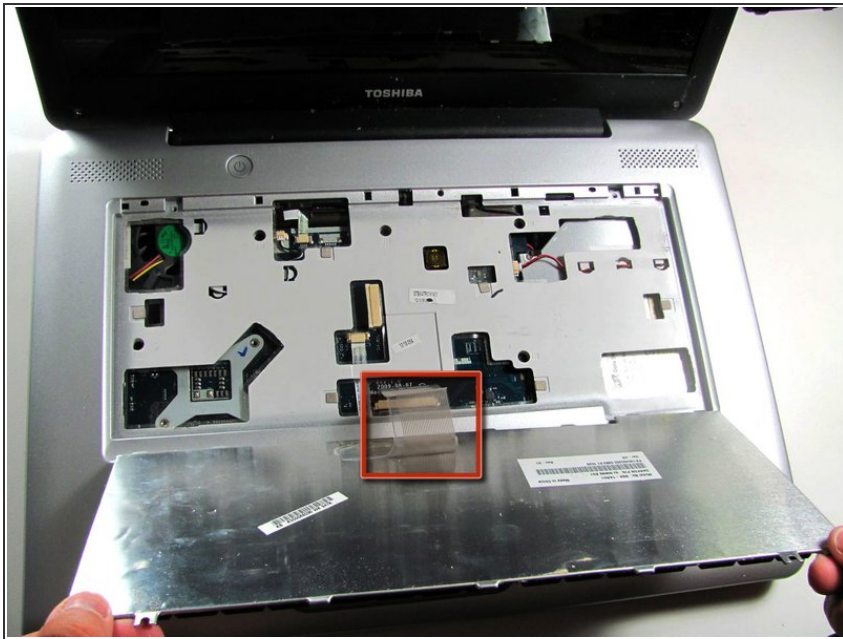
- i** Before repairing your laptop, power down the system, disconnect the charger if necessary and remove the battery.
- Use the flat edge of the plastic opening tool to pry open the narrow plastic strip above the keyboard.

Step 2



- Remove the three 3mm screws with a Phillips#00 Screwdriver.

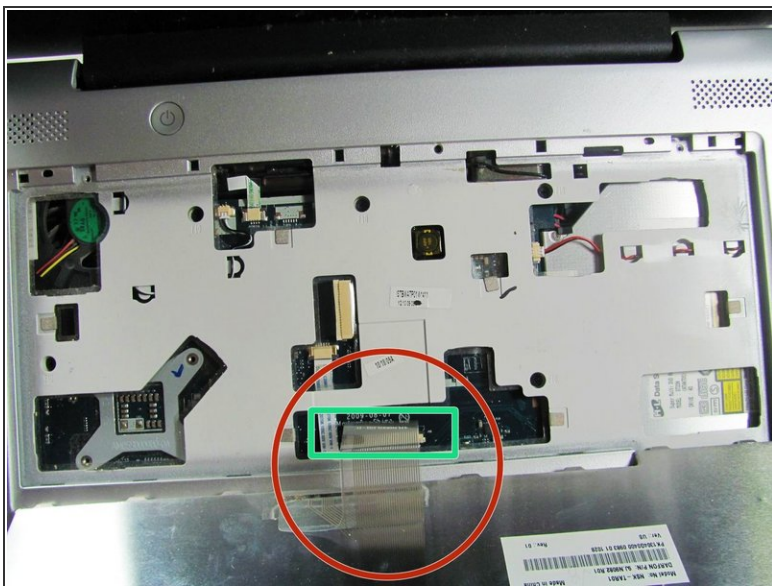
Step 3



- Lift the keyboard away from the top side of the laptop.

⚠ Do not pull the keyboard away too hard. It is still connected by the fragile ribbon cable (shown in the red square).

Step 4



- Disconnect the keyboard cable that is still attached to the keyboard (Red).
- Unlatch the fastener (green).
- Using your hands, pull the keyboard connector out, not up.

To reassemble your device, follow these instructions in reverse order.

This document was last generated on 2019-07-10 12:58:08 PM.