



Toshiba Satellite A215 S4697 RAM Replacement

A quick guide on installing extra RAM on to your Toshiba Satellite A215 S4697

Written By: Nikhitha Byragani



INTRODUCTION

Installing the RAM is a quick and easy process, just make sure you have the appropriate RAM for your laptop. The Toshiba Satellite A215 S4697 has a max of 4GB of RAM. This means two 2GB of RAM cards.



TOOLS:

- [Phillips #1 Screwdriver](#) (1)



PARTS:

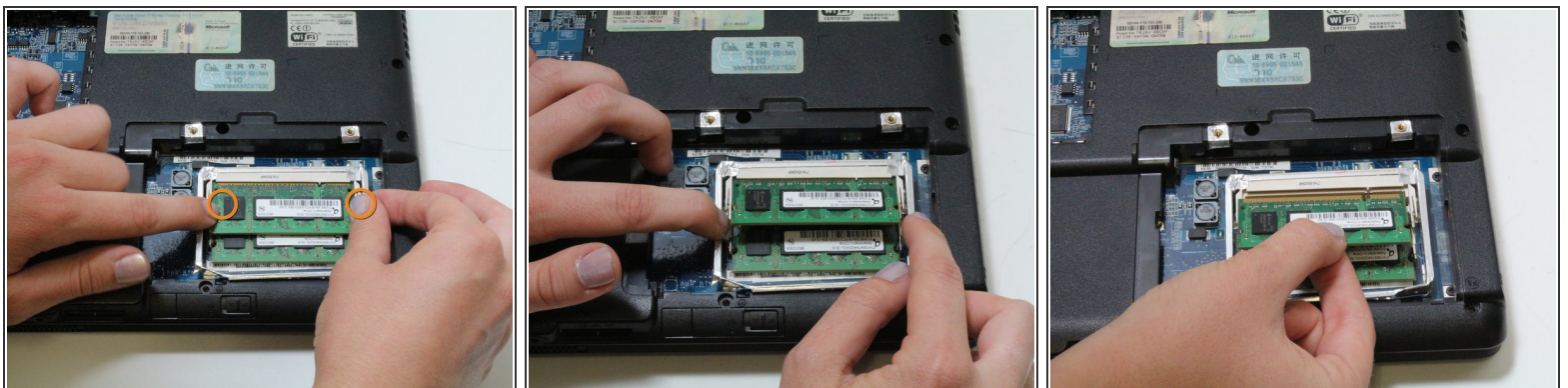
- [PC2-5300 1 GB RAM Chip](#) (1)
- [PC2-5300 2 GB RAM Chip](#) (1)

Step 1 — RAM



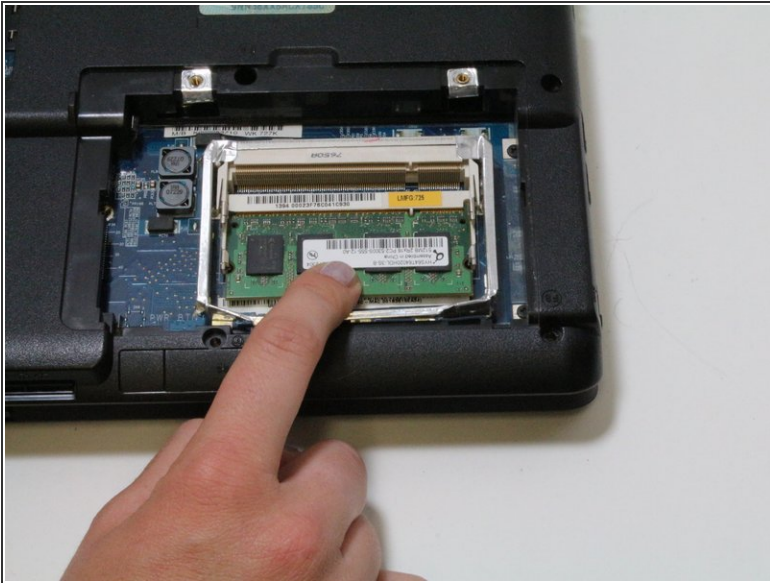
- Close the laptop and turn it over so that the base is facing upwards and the spine is away from you.
- Unscrew the two captive screws with the Phillips #1 and open the compartment.
- ⓘ Note that these captive screws cannot be removed from the lid.

Step 2



- Pull the two tabs away from the RAM so that the RAM will pop out.
- Gently pull the RAM away from base.

Step 3



- Insert new RAM chips here. Be sure that you are putting it in the right way by comparing the gold connectors to the shape of the slot.

To reassemble your device, follow these instructions in reverse order.