



Toshiba Satellite A105-S4284 Battery Replacement

You understand how to replace Toshiba Satellite A105-S4284 battery.

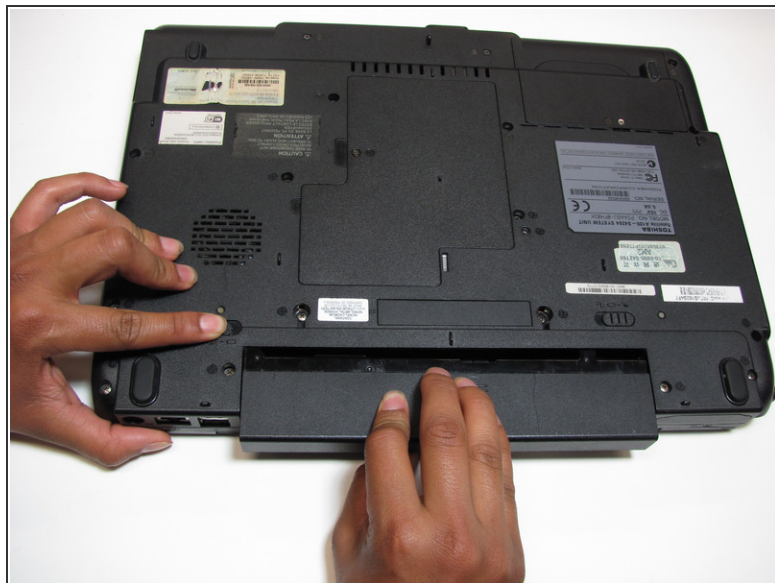
Written By: Utsav Shrestha




INTRODUCTION

If your computer is not turning on or holding a charge, it might be time for a new battery. This guide will show you how to remove and install your Toshiba satellite A105-S4284 battery.

Step 1 — Battery



 Make sure your computer is turned off and the computer is not plugged in.

- Turn your laptop upside down, and slide the right release tab outward.
- Using your left hand, hold the left release tab towards the left side and then pull the battery out.

To reassemble your device, follow these instructions in reverse order.

This document was last generated on 2017-08-08 03:47:43 AM.